



**EXPERIMENTAL AND PROBABILISTIC ASSESSMENT OF
CONCRETE INCORPORATING EXPANDED POLYSTYRENE
(EPS) WASTE AT ELEVATED TEMPERATURES**

BY

Kudirat Oziohu YUSUF

**DEPARTMENT OF CIVIL ENGINEERING,
FACULTY OF ENGINEERING,
AHMADU BELLO UNIVERSITY,
ZARIA, NIGERIA**

DECEMBER, 2016

**EXPERIMENTAL AND PROBABILISTIC ASSESSMENT OF CONCRETE
INCORPORATING EXPANDED POLYSTYRENE (EPS) WASTE AT ELEVATED
TEMPERATURES**

BY

Kudirat Oziohu YUSUF

B. Eng (UNILORIN), 2009; MNSE

P13EGCV8042

A DISSERTATION SUBMITTED TO THE SCHOOL OF POSTGRADUATE STUDIES

AHMADU BELLO UNIVERSITY, ZARIA

IN PARTIAL FULFILLMENT OF THE REQUIREMENTS FOR THE AWARD
OF MASTER OF SCIENCE DEGREE IN CIVIL ENGINEERING

DEPARTMENT OF CIVIL ENGINEERING,

FACULTY OF ENGINEERING,

AHMADU BELLO UNIVERSITY,

ZARIA, NIGERIA

DECEMBER, 2016

DECLARATION

I hereby declare that the work in this dissertation entitled “**Experimental and Probabilistic Assessment of Concrete Incorporating Expanded Polystyrene (EPS) Waste at Elevated Temperatures**” was carried out by me in the Department of Civil Engineering, Ahmadu Bello University, Zaria. The information derived from the literature has been duly acknowledged in the text and a list of references provided. No part of this work has been presented for another degree at any institution.

Kudirat Oziohu YUSUF

(Name of Student)

(Signature)

Date

CERTIFICATION

This dissertation entitled “**Experimental and Probabilistic Assessment of Concrete Incorporating Expanded Polystyrene (EPS) Waste at Elevated Temperatures**” by **Kudirat Oziohu YUSUF** meets the regulation governing the award of Master of Science (MSc.) degree in Civil Engineering of the Ahmadu Bello University, zaria and is approved for its contribution to knowledge and literary presentation.

Dr. Y. D. Amartey

(Chairman, Supervisory Committee)

(Signature)

Date

Dr. A. Ocholi

(Member, Supervisory Committee)

(Signature)

Date

Dr. Y. D. Amartey

(Head of Department)

(Signature)

Date

Prof. Kabir Bala

(Dean, School of Post Graduates Studies)

(Signature)

Date

ACKNOWLEDGEMENT

All praise is due to Almighty Allah, the Beneficent and the most Merciful, for being my all in all throughout this period. I am most thankful to him for sparing my life and leading the course of this endeavour.

My sincere gratitude goes to Dr. Y. D Amartey, the Chairman Supervisory Committee, who is also the Head of Department and also to the Committee member, Dr. A. Ocholi for their inspiration, encouragement, Valuable time, support and guidance given to me in the course of this research work. I really appreciate your contributions.

My profound gratitude goes to my caring and loving parent Mr and Mrs. M. S. Yusuf who have been my strength all through my academics endeavour both morally and financially and to my wonderful siblings Muhammed, Faruq, Taiye and Kehinde Yusuf, I love you all. And also to my wonderful families and friends, Dr. Faruq Suleiman, Ibrahim Suleiman, Sekinah Suleiman, Ismail Suleiman, Dr. Otuoze Hassan-Suleiman, Dr. Zainab Shuaib, Adams Obajimoh, Dr. Joseph Ovosi, Mr. Yahaya Usman and my boo, Alifa Mohammed Lawal for their love and support.

My special thanks goes to all the Academic staff members of the department, Prof. S.P. Ejeh, Prof. Osinubi, Prof. Abejide and Prof. Idris, the P.G coordinator, Dr. T. S Ijimdiya, Dr. A. A Murana, Engr. J. Ochepe, Engr. Ibrahim Aliyu, Aliyu Ozovehe, Dr. J. M. Kaura, Engr. Abdulmumin A. Shuaibu and all the entire Academic staff of the department whose names could not be mentioned for their immense support.

I am also grateful to all the non academic staff members as well as the laboratory personnels, who assisted me immensely towards the completion of this work in their capacity, Mrs. Salifu, the former departmental secretary, Engr. Ejembi, Mr. Balarabe and Mr. Abel all of the Department of Civil Engineering. I most sincerely thank my employer and Tertiary Education Trust Fund (TETFund) Intervention Agency for granting me the opportunity to pursue my post graduate studies through its tremendous facilities and with financial support.

Lastly, to my friends and colleague, Engr. Bakare Silifat, Engr. Nora, Mark Zuberu, Joseph Kelvin, Kabir Abdulkadir and those whose names could not be mentioned. You guys are wonderful. May God continue to shower his blessings on you all. (Amin)

DEDICATION

This dissertation is dedicated to Almighty Allah, the creator, the nourisher and the sustainer of the entire human race for being my provider and Guidance, for guiding me all through my life and for the successful completion of the race to obtain MSc. degree in Civil Engineering. Also to my lovely and caring parent Mr. And Mrs. M. S. Yusuf, and my Mentor, Dr. Otuoze Hassan-Suleiman, with whom I got all the inspiration and strength. May Almighty Allah continue to guide and protect them for me. (Amin)

TABLE OF CONTENTS

	Page
Title page -----	ii
Declaration -----	iii
Certification -----	iv
Acknowledgements -----	v
Dedication -----	vi
Table of Contents -----	vii
List of Tables -----	x
List of Figures -----	xi
List of Plates -----	xii
List of Appendices -----	xiii
Abbreviations and Notations -----	xiv
Abstract -----	xvi
CHAPTER ONE: INTRODUCTION -----	1
1.1 Background -----	1
1.2 Statement of Problem -----	2
1.3 Justification of Study -----	3
1.4 Aim and Objectives -----	3
1.5 Scope and Limitations of Study -----	4
CHAPTER TWO: LITERATURE REVIEW -----	5
2.1 Introduction -----	5
2.2 Polystyrene -----	6
2.2.1 Expanded Polystyrene (EPS) -----	6
2.2.2 Applications as a Construction Material -----	7
2.3 Incorporating EPS in Concrete -----	7
2.4 Lightweight Aggregate Concrete -----	12
2.5 Material Properties of Concrete at High Temperature -----	12
2.5.1 Physical and Chemical response of Concrete to High Temperature -----	13
2.6 Properties Influencing Fire Resistance -----	14
2.6.1 Thermal Properties -----	15
2.6.1.1 Thermal Conductivity -----	15
2.6.1.2 Specific Heat -----	15

2.6.1.3 Thermal Diffusivity	-----	16
2.6.1.4 Mass Loss	-----	16
2.6.2 Mechanical Properties	-----	16
2.6.3 Deformation Properties	-----	16
2.6.4 Spalling	-----	16
2.7 Reliability	-----	17
2.7.1 Limit State Functions	-----	18
2.7.2 First Order Reliability Method (FORM)	-----	18
CHAPTER THREE: MATERIALS AND METHODS	-----	20
3.1 Preamble	-----	20
3.2 Materials	-----	20
3.2.1 Cement	-----	20
3.2.1.1 Consistency Test	-----	20
3.2.1.2 Setting Time Test	-----	20
3.2.1.3 Soundness Test	-----	20
3.2.1.4 Specific Gravity Test	-----	21
3.2.2 Aggregates (fine and Coarse)	-----	21
3.2.2.1 Sieve Analysis (grading Test)	-----	21
3.2.2.2 Specific gravity Test	-----	21
3.2.2.3 Bulk density	-----	21
3.2.2.4 Moisture Content	-----	21
3.2.2.5 Aggregate Crushing Value	-----	21
3.2.2.6 Aggregate Impact Value	-----	21
3.2.3 Expanded Polystyrene (EPS) Waste	-----	22
3.3 Mix design for Concrete	-----	22
3.4 Mixing of Specimen	-----	24
3.5 Workability Test on Fresh Concrete	-----	26
3.5.1 Slump	-----	26
3.6 Casting of Concrete Cubes and Beams	-----	27
3.7 Cube Compression Test	-----	27
3.8 Flexural Strength Test	-----	28
3.9 Probabilistic Method	-----	29
3.9.1 Reliability Analysis	-----	29
3.9.2 Structural Configuration of the Beam	-----	30
3.9.3 Load Action Model for Beams under Bending	-----	31

3.9.4	Resistance Model for Beams under Bending	-----	31
3.9.5	Limit State Function	-----	32
3.9.6	Stochastic Models	-----	33
3.9.7	FORM Algorithm	-----	33
3.9.7.1	Partial derivation of failure mode due to bending	-----	33
3.9.7.2	Mean Values and Standard deviation for failure mode due to bending	---	34
3.10	Results from Laboratory Experiments	-----	34
CHAPTER FOUR: RESULTS AND DISCUSSIONS			-----39
4.1	Properties of Constituent Materials	-----	39
4.1.1	Properties of Cement (Dangote Cement)	-----	39
4.1.2	Properties of Aggregates	-----	39
4.1.2.1	Physical Properties of Aggregates	-----	39
4.1.2.2	Particle Size distribution for fine and coarse aggregate	-----	40
4.1.3	Properties of EPS	-----	41
4.2	Variation in Slump	-----	42
4.3	Results of Compressive Strength Test	-----	43
4.4	Result of Flexural Strength Test	-----	45
4.5	Physical Properties of Concrete at Elevated Temperatures	-----	46
4.6	Regression Analysis of Compressive Strength and EPS Content	-----	47
4.7	Computation of Safety Indices	-----	50
CHAPTER FIVE: CONCLUSION AND RECOMMENDATIONS			-----56
5.1	Conclusion	-----	56
5.2	Recommendation	-----	57
REFERENCES			-----58
APPENDICES			-----64

LIST OF TABLES

Table	Page
3.1: Mix proportion per Specimen -----	24
3.2: Beam Properties -----	30
3.3: Statistical Models of the basic design variables -----	33
3.4: Mean Compressive Strength of Cubes at 28 days in N/mm ² -----	36
3.5: Mean Flexural Strength of Beams at 28 days in N/mm ² -----	36
3.6: Safety Indices for Reinforced Concrete Beams at various load ratio and EPS content at 28 ⁰ C(RT) -----	36
3.7: Safety Indices for Reinforced Concrete Beams at various load ratio and EPS content at 200 ⁰ C -----	37
3.8: Safety Indices for Reinforced Concrete Beams at various load ratio and EPS content at 400 ⁰ C -----	37
3.9: Safety Indices for Reinforced Concrete Beams at various load ratio and EPS content at 600 ⁰ C -----	37
3.10: Safety Indices for Reinforced Concrete Beams at various load ratio and EPS content at 800 ⁰ C -----	38
3.11: Safety Indices for Reinforced Concrete Beams at various temperatures and EPS content at Load ratio of 1.0 -----	38
4.1: Summary of Physical Properties of cement -----	39
4.2: Summary of Physical Properties of aggregate -----	40
4.3: Properties of Expanded Polystyrene -----	42
4.4: Variation in Slump -----	42

LIST OF FIGURES

Fig	Page
2.1: Typical FORM Approximation Surface -----	19
3.1: Three point Bending Test Setup -----	29
3.2: Structural Configuration of a Simply Supported beam -----	30
3.3: Program flowchart representation for the Computation of β -----	35
4.1: Grain size distribution curve for fine aggregate -----	41
4.2: Grain size distribution curve for coarse aggregate -----	41
4.3: Cube Compressive Strength against Temperature -----	43
4.4: Cube Compressive Strength against percentage of EPS -----	43
4.5: Flexural Strength against EPS Content -----	45
4.6: Least square regression plot of cubes compressive strength and percentage of EPS at RT -----	48
4.7: Least square regression plot of cubes compressive strength and percentage of EPS at 200 ⁰ C -----	48
4.8: Least square regression plot of cubes compressive strength and percentage of EPS at 400 ⁰ C -----	49
4.9: Least square regression plot of cubes compressive strength and percentage of EPS at 600 ⁰ C -----	49
4.10: Least square regression plot of cubes compressive strength and percentage of EPS at 800 ⁰ C -----	50
4.11: Relationship between Safety Index and EPS Content at RT for various Load ratio -----	51
4.12: Relationship between Safety Index and EPS Content at 200 ⁰ C for various Load ratio -----	52
4.13: Relationship between Safety Index and EPS Content at 400 ⁰ C for various Load ratio -----	52
4.14: Relationship between Safety Index and EPS Content at 600 ⁰ C for various Load ratio -----	53
4.15: Relationship between Safety Index and EPS Content at 800 ⁰ C for various Load ratio -----	54
4.16: Relationship between Safety Index and Temperature at Load ratio of 1.0 ---	55

LIST OF PLATES

Plate	Page
I: Polystyrene and expanded polystyrene	-----6
II: A Typical EPS building system in Abuja	-----11
III: A waste form of EPS	-----22
IV: Shredded EPS	-----22
V: Batching of EPS by Volume	-----25
VI: Weighing of other Materials	-----25
VII: Hand mixing of Aggregates	-----25
VIII: Compaction with Tamping Rod	-----25
IX: Curing of Specimen	-----25
X: Specimen after Curing	-----25
XI: Loading of Specimen into Furnace	-----26
XII: Slump Test	-----27
XIII: Compression Test	-----28
XIV: Flexural Strength Test	-----29
XV: Colour difference after exposure to temperatures	-----46
XVI: Specimen after exposure to high temperature	-----46

LIST OF APPENDICES

Appendix	Page
I-a: Consistency of Cement samples	-----64
I-b: Initial Setting Time of Cement samples	-----64
I-c: Final Setting Time of Cement samples	-----64
I-d: Soundness of cement samples	-----64
I-e: Specific gravity of cement	-----65
I-f: Sieve analysis of fine aggregates	-----65
I-g: Specific gravity of fine aggregates	-----66
I-h: Bulk density of fine aggregates	-----66
I-i: Moisture content of sand	-----66
I-j: Sieve analysis of coarse aggregate	-----67
I-k: Specific gravity of coarse aggregate	-----67
I-l: Bulk density of coarse aggregate	-----68
I-m: Aggregate Impact Value Test	-----68
I-n: Aggregate Crushing Value Test	-----68
I-o: Moisture content of granite	-----69
I-p: Bulk density of EPS	-----69
I-q: Specific gravity of EPS	-----70
I-r: Variation in Slump with EPS	-----70
II-a: Compressive Strength of cubes at room temperature (RT)	-----71
II-b: Compressive Strength of cubes at 200 ⁰ C temperature	-----72
II-c: Compressive Strength of cubes at 400 ⁰ C temperature	-----73
II-d: Compressive Strength of cubes at 600 ⁰ C temperature	-----74
II-e: Compressive Strength of cubes at 800 ⁰ C temperature	-----75
III-a: Flexural Strength of beams at room temperature (RT)	-----76
III-b: Flexural Strength of beams at 200 ⁰ C temperature	-----77
III-c: Flexural Strength of beams at 400 ⁰ C temperature	-----78
III-d: Flexural Strength of beams at 600 ⁰ C temperature	-----79
III-e: Flexural Strength of beams at 800 ⁰ C temperature	-----80
IV: Reliability Code for Reinforced Concrete Beam in Bending	-----81

ABBREVIATIONS AND NOTATIONS

G_k = Dead load

Q_k = Live load

α = Load ratio

A = Area

ACI = American Concrete Institute

A_s = Area of Steel

b = width of beam

BS = British Standard

C = weight of cement

C-S-H = Calcium Silicate Hydrate

d = depth of beam

EN = European Standard

EPS = Expanded Polystyrene

EUMEPS = European Manufacturer of Expanded Polystyrene

FORM = First Order Reliability Method

$G(x)$ = Performance function

L = length between two supports

LWC = Lightweight Concrete

M_A = Applied Moment

M_D = Design Moment

M_R = Moment of Resistance

P = Applied load

P_f = Probability of failure

R = Reliability

RC = Reinforced Concrete

RT = Room Temperature

SORM = Second Order Reliability Method

SPS = Stabilised Polystyrene

UPV = Ultra Pulse Velocity

V_C = Volume fraction of cement

$V_{C,A}$ = Volume fraction of coarse aggregate

$V_{F,A}$ = Volume fraction of fine aggregate

V_W = Volume fraction of water

Wt. = weight

Y_g = Partial safety factor live load

Y_q = Partial safety factor dead load

β = safety index

f_b = flexural strength of concrete beam

f_{ck} = Cube Characteristic strength

f_{cu} = Compressive Strength of concrete cube

f_y = Steel strength

μ = mean

ABSTRACT

This study is to investigate the effects of Expanded Polystyrene (EPS) as a partial replacement for coarse aggregates at 0%, 5%, 10%, 15%, 20%, 25%, 30%, 35%, 40%, 45%, and 50% at elevated temperatures of Room Temperature (28⁰C), 200⁰C, 400⁰C, 600⁰C, and 800⁰C for the duration of 2 hrs each. Compressive strength and flexural strength were carried out on concrete cubes of size 150mm × 150mm × 150mm and concrete beams of size 150mm × 150mm × 750mm respectively. The experimental results shows that the increase in EPS content as well as the increase in temperature causes decrease in the strength of concrete at room temperature, while inclusion of EPS from 5% to 15% increased the resistance of concrete to heat better than the control at a maximum temperature of 400⁰C. This implied that the trapped air within the closed cells of EPS reduces the flow of heat, thereby reducing loss of moisture from the concrete but the optimum performance of EPS in concrete lies at 10% EPS content at a temperature of 400⁰C, where the target Compressive strength of 25N/mm² was still achievable. Maximum flexural strength was achieved at 200⁰C at 25% EPS content. The mathematical model relating compressive strength of concrete cubes with Expanded Polystyrene was predicted using least regression analysis from the experimental data obtained and it was found to have coefficient of correlation values (R^2) of 0.984, 0.934, 0.856, 0.947 and 0.952 respectively for 28⁰C, 200⁰C, 400⁰C, 600⁰C and 800⁰C. These were incorporated in the Probabilistic assessment of a designed simply supported reinforced concrete beam exposed to elevated temperatures. Flexural limit state function was developed and evaluated using First Order Reliability Method (FORM) which was implemented through a developed program using MATLAB. From the reliability analysis, safety index is higher at load ratio (dead load to live load) of 1.0 ($Q_k = 7.8\text{kN/m}$), while for a reinforced concrete beams to be considered safe in bending considering 800⁰C, the maximum EPS content must be 20% coarse aggregate replacement which gives a safety index of 3.98 as above the targeted safety of 3.8 as recommended in JCSS (2001).

CHAPTER ONE

INTRODUCTION

1.1 Background

The high demand for construction materials most especially aggregates of concrete which are sometimes derived from natural resources through quarrying of rocks or dredging of seas causing the depletion of this natural resources, thereby making them to becoming scarce day by day. At this point researchers and engineers who have foresight to keep developmental activities abreast and curtail the cost factor have started looking for alternative building materials (Thomas, *et al.*, 2014).

For sustainability and reusability, so many wastes have been used to replace aggregates of concrete, ranging from agricultural wastes to industrial waste products. With greater knowledge and insulation concerns, more material were also used including expanded clay, expanded glass, Polypropylene and expanded polystyrene (EPS) (Kuhail and Shihada, 2003).

EPS is a light weight cellular plastics material comprising of 98% air and 2% (polystyrene). It has a closed cell structure and cannot absorb water. Therefore, it has a good sound and thermal insulation characteristics as well as impact resistance (Bello, 2011).

As a result of its light weight nature and also its thermal and sound insulating effects, it has been proven by so many researcher works as an alternative in building material. In using any material as building components, getting to know the material properties only is not enough to determine how safe the material will be during its service life. During the service life of a structure, such as building and bridges which has reinforced concrete beam as its major members, it is expected to transfer load safely to the foundation. There are three types of load that affect structures (Kigha, 2014); they are primary loads which are loads which permanently or very often affect the structure, these could be dead load, live load etc,

Secondary loads which are loads that affects the structure less often, such as wind loads, snow loads etc and thirdly Special loads, which are loads which rarely affects the structure, for example, earthquake loads, critical accident loads, fire loads etc.

Since it is well established that the mechanical properties of concrete in general are adversely affected by thermal exposure (Phan, 1996) and human safety in case of fire is one major consideration in the design of buildings, it is extremely necessary to have a complete knowledge about the behaviour of all construction materials before using them in structural elements (Morsy, *et al.* 2010). Therefore, the knowledge of concrete structural members when used in buildings has to satisfy appropriate fire safety requirements specified in building codes (EN 1991-1-2; EN 1992-1-2).

The motivation for this research is to create awareness to the use Expanded Polystyrene waste for affordable and less expensive structures in the case of elevated temperature such as fire. Structural design has moved towards a more rational and probability – based approach which is referred to as limit state design; such design which takes into account more information than the deterministic methods in designing structural components (Melchers, 1999). Kohler (2007) reported that the most straight forward method of structural reliability analysis is Monte Carlo Simulation while the most efficient are First Order Reliability Method (FORM) and Second Order Reliability Method (SORM). Thus, the safety levels of reinforced concrete beams under various elevated temperatures, considering the percentage replacement of EPS for coarse aggregate was evaluated through an experimental assessment and probabilistic formulation approach using FORM.

1.2 Statement of Problem

Solid waste as defined by Babayemi and Dauda, (2009), is a non-liquid and non-gaseous products of human activities regarded as being unwanted or useless. After the original use of

EPS as packaging materials, its goes back to the dumpsites as solid wastes and it's remain there as long as eternity due to its non-biodegradable nature. Since elevated temperature is one extreme condition to which concrete structure could be exposed to either accidentally or industrial means. The need to have new knowledge and structural performance on this expanded polystyrene as construction materials at elevated temperatures becomes necessary since Expanded Polystyrene (EPS) building product has been predominantly used in Nigerian building industry in urban areas like Abuja and Akure (Anthony *et al.*, 2014).

1.3 Justification of Study

In most developed nations of the world, it has been verified that the conventional building materials are inadequate towards meeting the housing needs of the growing population, which has led to futuristic researches towards the development of new alternative building materials through advance plastics materials as building materials that will meets the safety standards and the dweller's comfort requirements, which must also be thermally insulating, lightweight and inexpensive (Lee, *et al.* 2006).

For a developing nation like Nigeria, utilising expanded polystyrene waste in concrete production will not only solves the problem of disposing this ultra-light (up to 98% air) solid waste but also helps to preserve natural resources.(Herki, *et al.* 2013) and also ascertain the safety of this material in concrete after being exposed to extreme conditions such as fire.

1.4 Aim and Objectives

1.4.1 Aim

The aim of the study is to investigate the properties of concrete incorporating Expanded Polystyrene (EPS) waste at Elevated temperatures using experimental and probabilistic approaches.

1.4.2 Objectives

The Specific Objectives include:

- i. To investigate the properties of materials used such as cement, fine aggregates, coarse aggregates and Expanded Polystyrene (EPS).
- ii. To investigate the compressive strength and flexural strength on Concrete (cubes and beams) containing various percentages of EPS at elevated temperatures.
- iii. To established the relationship between the compressive strength of concrete and EPS at various temperatures.
- iv. To assessed the reliability or safety of reinforced concrete beams containing EPS at elevated temperatures.
- v. To assessed different load ratio on the safety of the beam containing EPS under elevated temperatures.

1.5 SCOPE AND LIMITATIONS

1.5.1 Scope of Research

The Scope of this research covers the Compressive strength, Flexural Strength test and the Reliability analysis of the structural performance of a designed simply supported reinforced concrete beam containing Expanded Polystyrene (EPS) at various temperatures exposure in its flexural capacity, which was evaluated using First Order Reliability Method (FORM) and implemented through a developed program using MATLAB toolkit.

1.5.2 Limitations of Study

- i. The reinforced concrete beam containing Expanded Polystyrene (EPS) was analyzed in flexure only, using MATLAB.
- ii. The designed simply supported reinforced concrete beam was obtained from literature.
- iii. The strength properties used was obtained from the experimental study carried out in this work.

CHAPTER TWO

LITERATURE REVIEW

2.1 Introduction

The high consumption of concrete in construction industry has lead to increase in demands for construction materials such as aggregates, cement and water. The high rate of consumption of these raw materials in the construction industry most especially aggregates which are derived from resources such as rocks and dredging of rivers causes the depletion of natural and mineral resources(Mehta, 1999). For sustainable growth, so many wastes have been used to replace aggregate of concrete ranging agricultural waste products as well; as industrial waste (Kuhail and Shihada, 2003).

After the September 11th attack on the World Trade Center, U.S.A, interest in the design of structures for fire has greatly increased, since fire is one hazard that may result in death, injury or property damage. The extensive use of concrete as a structural material for nuclear power reactors, pressure vessels, storage tank for hot crude oil, etc has increased the risk of exposure of concrete to high temperatures (Balakrishnaiah *et al.*, 2013). Building codes specified that concrete structural members when used in building have to satisfy appropriate fire safety requirements, with the objective of protecting life and properties (Kacianauskas, *et al.*, 2014). The Knowledge of strength and deformation properties of concrete at elevated temperatures is essential in estimating the behaviour and the load-bearing capacity of concrete structures when subjected to fire since the fire performance of structural members depends on the properties of the constituent materials, knowledge of high-temperature properties of concrete is critical for fire resistance assessment under performance-based codes (Kodur *et al.*, 2008). The need to determine the fire performance of the constituent material used in structural members through experimental and probabilistic method is of paramount

importance, since the uncertainties in structural parameters such as material properties, external loads; etc has caused serious attentions to reliability in structural design (Ghasemi and Yousefi, 2011).

2.2 Polystyrene

Polystyrene is a synthetic resin produced by the polymerization of styrene, while styrene is obtained by reacting ethylene with benzene in the presence of aluminium chloride to yield ethylbenzene. There are two widely used forms of polystyrene, they are; Extruded Polystyrene (XPS) which is produced by moulding sprayed styrene resin polymerization under pressure and Expanded Polystyrene (EPS) which is produced by subjecting the small expandable beads to steam which causes the thermoplastic polystyrene to soften.

2.2.1 Expanded Polystyrene (EPS)

Expanded Polystyrene Foam (EPS) is a foam-like-closed-pored thermoplastic material, typically in white colour, obtained from polymerization of styrene monomer as shown in Plate I. It is a lightweight cellular plastics material consisting of closed cell structured fine spherical shaped particles which are comprised of about 98% air and 2% polystyrene.

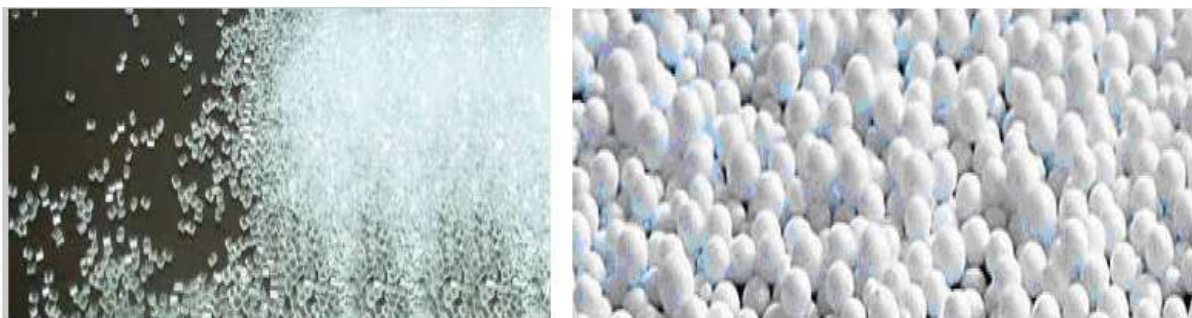


Plate I: Polystyrene and expanded polystyrene (Kaya and Kar (2014))

Expanded polystyrene has very wide range of applications. These applications can be classified into three main categories, which are;

- i. Packaging

- ii. Construction
- iii. Other applications.
 - i. Packaging: EPS is the best packaging option for high value heavy product and also food packaging. Owing to its shock absorbing properties, it can completely protect and safe industrial products such as fragile pharmaceutical products to electronic components from risk in transporting and handling,
 - ii. Construction: EPS is used in many aspects of building work including large structures. Its major uses as insulating material due to its low value of thermal conductivity, its low cost of installation, its resistance to moisture, etc has been emphasized by Gnip *et al.*, (2008) and Doroudiani and Omidian, (2010).
 - iii. Other applications: Polystyrene can be used for other applications, such as coffee cups, plastic chairs, videocassette cases and office equipment (Maharana *et al.*,2007).

2.2.2 Applications as a Construction Material

The following properties of EPS that made it important to be used as construction materials are;

- i. Low thermal conductivity – due to its closed air-filled cell structure that inhibits the passage of heat or cold, a high capacity for thermal insulation is achieved.
- ii. Low weight – its low density allows for light and safe construction works.
- iii. Low water absorption – EPS does not absorb moisture and its thermal and mechanical properties are unaffected by damp, humidity or moisture.
- iv. Ease of handling and installation – the low weight of EPS makes it easy to handle and to transport to site.
- v. Chemical resistance – EPS is completely compatible with other materials used in construction including cements, water and so on (EUMEPS).

2.3 Incorporating EPS in Concrete

Sadrmomtazi *et al.* (2007) investigated the effect of using polypropylene fibers and different cementitious materials on mechanical properties of EPS concrete and concluded that the compressive strength of EPS concretes appears to increase linearly with an increase in concrete density, or with a decrease in the EPS volume while the results of flexural behaviour test showed that, the flexural strength decreased with an increase in the volume of EPS in mixes.

Kaya and Kar (2014), researched on thermal and Mechanical properties of concrete with EPS waste by using hot wire method for measuring the thermal conductivity of the sample having magnitude and sensitivity of $0.02 - 10 \text{ Wm}^{-1}\text{K}^{-1}$ and $\pm 5\%$ on its scale respectively. The result shows that as EPS increases, thermal conductivity, water absorption, density of the samples and tensile strength values decreases. And they recommended the following uses of EPS; (i) production of earthquake-proof low-intensity concrete, (ii) as insulation-purpose construction material, (iii) decoration.

Thomas *et al.*, (2014) researched on the partial replacement of coarse aggregates by expanded polystyrene beads in concrete using 5%, 10%, 15%, 20%, 25% and 30% by volume of coarse aggregates replacement and concluded that the increase in the EPS beads content in concrete mixes reduces the compressive and tensile strength of concrete. Which was attributed to increased in voids in the mix due to the increased in EPS volume and as well as the low specific gravity of EPS which causes overall reduction of density of the concrete.

Idawati, *et al.*, (2003) reports the results of an experimental investigation into the properties of hardened concrete bricks containing expanded polystyrene beads. The beads were used as part of sand replacement in the mixes. It was found that polystyrene concrete has low compressive strength. The results indicated that polystyrene concrete mix with certain portion of the beads may provide as a suitable alternative material in the construction industry.

Le Roy *et al.* (2005) investigated the mix design and mechanical properties of very lightweight concrete (LWC) made of expanded polystyrene spheres (EPS). Their research shows that the lower the inclusion size, the higher the compressive strength of the hardened concrete.

From Miled *et al.*, (2007) investigation, It was also observed that the lower the EPS bead size, the greater the concrete compressive strength.

Babu, *et al.* (2003) investigated the behaviour of lightweight expanded polystyrene concrete containing silica fume and found that the strength of EPS concrete marginally increased as EPS bead size decreased and increased as the natural coarse aggregate size in concrete increased.

Bello (2011) carried out a research work on the suitability of polystyrene beads waste materials for lightweight concrete and concluded that the compressive strength which corresponds to the specified requirement for structural lightweight concrete was achieved with 30% and 50% coarse aggregate replacement by volume.

Kuhail and Shihada (2003) studied the Mechanical properties of polystyrene-lightweight concrete and in their studies, factors which affect the compressive strength of polystyrene-lightweight concrete such as water-cement ratio, polystyrene/cement ratio, cement content, curing time, maturity, compaction, fire and admixtures were examined and also establishing a relation between the tensile and compressive strength and procedure for designing polystyrene-lightweight concrete mixes were set out. It shows that the compressive strength increases as the water cement decreases, as the amount of aggregates increases, and as the cement content increases. The compressive strength of polystyrene-lightweight concrete is much lower than normal weight concrete due to the weak bond between the polystyrene beads and the cement paste, and weakness of the beads themselves. Likewise the tensile

strength of polystyrene-lightweight concrete increases as the cement content or the amount of aggregate is increased, they attributed this substantial reduction in tensile strength to the weaker bond between the aggregates and cement paste and to the weakness of the polystyrene beads in tension.

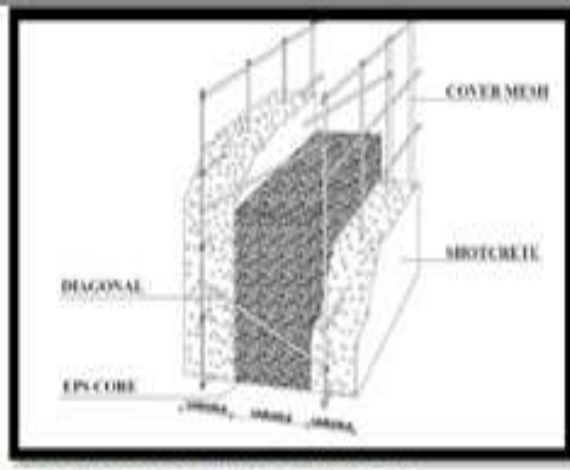
Momtazi *et al.* (2010) investigated the durability of lightweight concrete containing EPS in salty exposure condition and concluded that after 210 days, the concrete specimen containing EPS show positive effects which can safe keep the reinforcing steel bars from corrosion. Likewise, Bandala *et al.* (2015) who also investigated the electrochemical and mechanical properties of lightweight concrete blocks with expanded polystyrene foam by replacing gravel with thermally modified expanded polystyrene (MEPS) to the levels of 0%, 25%, 50%, 75% and 100% in volume. It was observed from the study that with 75% and 100% replacement the concrete block lightened and when submerged in the solution of 3.5% sodium chloride (NaCl) they showed a better corrosion protection.

According to the European Manufacturer of EPS (EUMEPS), If EPS is exposed to temperatures above 100°C, it begins to soften, to contract and finally to melt.

Anthony *et al.* (2014) studied the performance perception of expanded polystyrene building product by the clients and the end users, in which a building estate in Abuja was used as a case study. Questionnaires were distributed among the clients (Citec International Estates Limited) and the residents of the building estate (Mount Pleasant Estates, Abuja) and statistical tools were used to analyse the data collected and they concluded that there is a great satisfaction in the application of expanded polystyrene building product in Nigerian building industry. Plate II shows the building in Citec International Estates, Abuja which was constructed using EPS.



EPS PANELS



EPS SANDWICH WALL SYSTEM



EPS FLOORING SYSTEM



EPS CORNICE PANELS



SINGLE STOREY BUILDING MODEL



MULTIPLE STOREYS BUILDING MODEL

Plate II: A Typical EPS building System in Abuja; Source: Anthony *et al.* (2014)

2.4 Lightweight Aggregate Concrete

Due to ultra lightweight properties of EPS, its inclusion in concrete will makes a lightweight concrete which has so many advantages, such as lighter loads during construction, reduced self-weight in structures, and increased thermal resistance. Lightweight concrete is generally accepted as concrete having density of about 1800kg/m^3 or less (Thomat *et al.*, 2014).

Lightweight concretes can be produced by replacing the normal aggregates in concrete either partially or fully, depending upon the requirements of density and strength (Ganesh 2003). Lightweight concrete is used for both structural and non-structural applications.. Structural lightweight concrete (LWC) has an in place density (unit weight) of 1440 to 1840 kg/m^3 compared to normal weight concrete with a density in the range of 2240 to 2400 kg/m^3 . For structural applications the concrete strength should be greater than (17.0 MPa) (ACI 213 2003)

2.5 Material Properties of Concrete at High Temperature

When hardened concrete is heated gradually, the loss of weight appears to take place in the following three stages. In the first stage, called drying stage, evaporation of water from large capillaries and void will take place. At the second stage called dehydration stage, which occurs between 100 and 600°C , loss of non –evaporable water from gel pores and small capillary pores will take place. This stage is accompanied with substantial shrinkage of concrete. At the final stage, decomposition stage, several changes will occur in the concrete system. At the temperature above 1000°C , the combined water form hardened paste will be released. This will cause the hardened paste to lose its cementing property and thus

significantly reducing the hardened concrete properties. This process will be accompanied with significant shrinkage of cement paste as well as the loss in strength (Kigha, 2014).

According to Handoo *et al.*, (2002), subjecting concrete to high temperatures leads to transformations and reactions that cause progressive breakdown of cement gel structure and consequent loss in load-bearing capacity. In addition, several factors have been identified for the deterioration of concrete due to high temperature. These include decomposition of the calcium hydroxide with time and water, expansion of lime on re-hydration, destruction of gel structure, phase transformation in some types of aggregate, and development of micro-cracks due to thermal incompatibility between cement paste matrix and aggregate phase (Mohammad *et al.*, (2009).

2.5.1 Physical and Chemical Response of Concrete to High Temperatures

High temperatures cause chemical and micro structural changes, such as water migration (diffusion, drying), increased dehydration, interfacial thermal incompatibility, and chemical decomposition of hardened cement paste and aggregates. According to Zhang *et al.*, (2000), these changes cause decrease in both the strength and stiffness of concrete and lead to irrecoverable deformation of structural components. Furthermore, the effect of elevated temperatures at varying heating scenarios on the strength of plain concrete has been investigated by many researchers such as Phan *et al.*, (2001); Xiao and Falkner, (2006); Jianzhuang and Konig, (2004); Kigha (2014); Dahiru (2014) etc.

According to Gruz, (1966), Chew, (1993) during fire event, concrete elements (beams, columns, slabs, walls and sometimes foundations) are exposed to different heating scenarios (temperatures) which considerably changes the strength, stiffness as well as the physical properties of concrete.

According to Ian *et al.*, (2005); Khoury, (2004), when the temperature reaches 400⁰C, the calcium hydroxide in the cement will begin to dehydrate, generating more water vapour which consequently brings significant reduction in the physical strength of the concrete.

Anand and Arulraj, (2011) presented a research based on experimental studies on the performance of concrete when exposed to higher temperature, and concluded that some important factors such as Strength of concrete, type of cement, type of aggregate, water cement ratio, density of concrete, percentage of reinforcement and cover to the reinforcement, affects the performance of concrete at elevated temperature.

Dahiru, (2014) Investigated the behaviour of concrete subjected to various elevated temperatures using combined aggregates and single aggregate size to determine the fire resistance of concrete cubes and concrete prisms at five different temperatures level of 100⁰C, 300⁰C, 500⁰C, 700⁰C and 900⁰C for four different exposure time ranging from 30min up to 120min. He observed that above exposure time of 1hour, high temperature have significant effect on the residual compressive strength of concrete and the flexural strength was found to be more sensitive to high temperature exposure than compressive strength. The result also shows that there is higher deflection for concrete with high concrete cover at exposure time of 2hours.

Concrete is well known for its capacity to endure high temperatures and fires, owing to its low thermal conductivity and high specific heat (Arioz, 2007). However, it does not mean that fire as well as higher temperatures does not affect the concrete. Characteristics such as colour, compressive strength, elasticity, concrete density and surface appearance are affected by high temperature (Morsy, *et al.* 2010). Sha and Pereira, (2001) pointed out that the behaviour of concrete subjected to high temperatures is as a result of many factors such as

heating rate, peak temperatures, dehydration of C-S-H gel, phase transformations, and thermal incompatibility between aggregates and cement paste.

2.6 Properties Influencing Fire Resistance

The fire response of reinforced concrete members as explained by Kaccianauskas *et al.*, (2014), is influenced by the characteristics of constituent materials namely, concrete and reinforcing steel. These include (a) thermal properties, (b) mechanical properties, (c) deformation properties, and (d) material specific characteristics such as spalling in concrete. The thermal properties determine the extent of heat transfer to the structural member, whereas the mechanical properties of constituent materials determine the extent of strength loss and stiffness deterioration of the member. The deformation properties in conjunction with mechanical properties, determine the extent of deformations and strains in the structural member.

2.6.1 Thermal Properties

The thermal properties that influence temperature rise and distribution in a concrete structural member are thermal conductivity, specific heat, thermal diffusivity and mass loss.

2.6.1.1 Thermal Conductivity

Thermal conductivity is the property of a material to conduct heat. Concrete contains moisture in different forms, and the type and the amount of moisture have a significant influence on thermal conductivity. On average, the thermal conductivity of conventional normal strength concrete, at room temperature, ranges between 1.4 and 3.6 W/m⁰C.

2.6.1.2 Specific heat

This is the amount of heat per unit mass, required to change the temperature of a material by one degree and is often expressed in terms of thermal (heat) capacity which is the product of specific heat and density. Specific heat is highly influenced by moisture content, aggregate type and density of concrete

2.6.1.3 Thermal diffusivity

The thermal diffusivity of a material is defined as the ratio of thermal conductivity to the volumetric specific heat of the material. It measures the rate of heat transfer from an exposed surface of a material to inner layers.

2.6.1.4 Mass loss

Depending on the density, concrete are usually subdivided into two major groups: (1) normal-weight concretes with densities in 2240 to 2400kg/m³ range; and (2) lightweight concretes with densities between 1440 and 1840 kg/m³. The density or mass of concrete decreases with increasing temperature due to loss of moisture, in which the type of aggregate has high influence in the retention in mass of concrete at elevated temperatures.

2.6.2 Mechanical Properties

The mechanical properties that are of primary interest in fire resistance design are compressive strength, tensile strength, elastic modulus, and stress-strain response in compression. Mechanical properties of concrete at elevated temperatures have been studied

extensively in the literature in comparison to thermal properties (Kodur and Harmathy, 2008; Khoury, 2008; Tang, and Lo, 2009; Noumowe, 2005; Li, *et al.*, 2004)

2.6.3 Deformation Properties

Deformation properties that include thermal expansion, creep strain, and transient strain are highly dependent on the chemical composition, the type of aggregate, and the chemical and physical reactions that occur in concrete during heating (Schneider, 1988).

2.6.4 Spalling

In addition to thermal, mechanical, and deformation properties, another factor that has a significant influence on the fire performance of a concrete structural member is spalling (Dwaikat and Kodur, 2009). Spalling can occur after exposure to rapid heating and can be accompanied by violent explosions or it may happen during later stages when concrete has become so weak after heating such that, when cracks develop, pieces of concrete fall off from the surface of concrete member. The consequences are limited as long as the extent of damage is small, but extensive spalling may lead to exposure of deeper layers of concrete to fire temperatures, thereby increasing the rate of transmission of heat to the reinforcement.

2.7 Reliability

Reliability is the probability that unsatisfactory performance or failure will not occur or Probability that a system will perform its intended function for a specific period of time under a given set of conditions.

$$R = 1 - P_f \tag{2.2}$$

Where P_f is the probability of failure.

The uncertainties in structural parameters such as material properties, external loads, geometry, etc., have caused serious attentions to reliability in structural design and analysis (Ghasemi and Yousefi, 2011). Thus, reliability theory, as a branch of theory of probability, provides a firm framework which can introduce a proper factor of safety when required (Faber and Sorensen, 2002). Thus, any system made of a satisfied reliability index, may be referred to as safe. According to Uche and Afolayan (2008), it was reported that the design of any structure must ensure safety at worst loading condition and the deformation of the members during normal working condition must be accepted from durability performance and appearance of the structure

2.7.1 Limit State Functions

A limit state function gives a descriptive assessment of the state of the structure as being “Unsafe” or “Safe”. It is obtained from the traditional deterministic analysis but uncertain parameters are treated statistically. Generally, limit state function is given as:

$$G(\mathcal{X}) = R - S \tag{2.3}$$

Where R is a function of material property and S is a function of applied loads, densities and dimensions of the members under consideration. The limit state function is usually expressed in terms of the basic random variables X which affect the structural performance.

$\mathcal{X}_i = (\mathcal{X}_1, \mathcal{X}_2, \mathcal{X}_3, \dots \dots \dots \mathcal{X}_n)$, and

$$G(\mathcal{X}) = f(\mathcal{X}) = f(\mathcal{X}_1, \mathcal{X}_2, \mathcal{X}_3, \dots \dots \dots \mathcal{X}_n) \tag{2.4}$$

Where $G(\mathcal{X})$ is the performance function (safety margin)

The limit state equation is represented as;

$G(\mathcal{X}) < 0$, corresponds to failure in the structure.

$G(\mathcal{X}) = 0$, correspond to interface between safety and failure.

$G(\mathcal{X}) > 0$, corresponds to safety of the structure.

Therefore, the probability of failure is given as $P[G(\mathcal{X}) < 0]$

2.7.2 First Order Reliability Method (FORM)

First Order Reliability Method (FORM), a very powerful, robust and accurate for computing of failure probabilities is used in the evaluation of structures in the context of non-linear analysis, which yields accurate prediction of structural behaviour in the context of probability analysis (Mohammed and Karim, 2015).

The probability of failure (P_f) used to express structural safety is typically represented by the reliability index, β . This is the shortest distance from the origin of the Cartesian point to the approximated failure surface as shown in Fig. 2.1. The failure surface is known as the limit state surface, $g(x)$ evaluated at the undesired level. In this study, this β is when the design moment, M_D exceeds the Resistance moment of the section, M_R as in equation 2.5.

$$G(\mathcal{X}) = G(\mathcal{X}_1, \mathcal{X}_2, \mathcal{X}_3, \dots \dots \dots \mathcal{X}_n) = M_R - M_D \quad (2.5)$$

Where, \mathcal{X}_i represents the basic random variables in the load and strength domains.

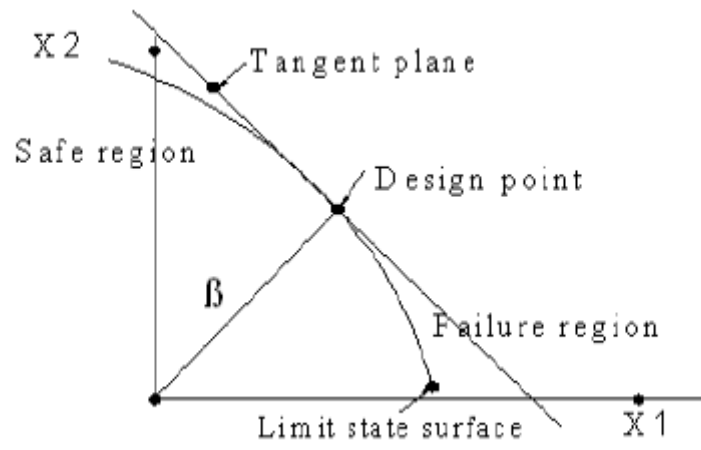


Fig. 2.1: Typical FORM approximation surface (Mohammed and Karim, 2015).

CHAPTER THREE

MATERIALS AND METHODS

3.1 PREAMBLE

The test involved the constituent materials, fresh and the hardened concrete. All the tests were carried out in the department of Civil Engineering, Ahmadu Bello University, Zaria with the exception of specimens heating which was carried out at Industrial Development Center, (IDC) Samaru, Zaria.

3.2 Materials

3.2.1 Cement

A Dangote brand of cement was used as the binder for the concrete production. Physical properties test were carried out on the Cement in accordance with BS 4550-3:1978.

3.2.1.1 Consistency Test (%): The test was carried out in accordance with BS 4550-3:1978, Using Vicat apparatus with plunger. Cement paste of standard consistence has a specified resistance to penetration by standard plunger. The water required for such a paste is determined by trial penetrations of pastes with different water contents. Content of water was expressed as percentage by mass of the cement. Appendix I-a shows the detailed result.

3.2.1.2 Setting Time Test: The test was conducted in accordance with BS 4550-3:1978 Using Vicat apparatus with steel needle, the Initial and the final setting time was determined by observing the needle penetration into the cement paste of standard consistence inside the mould until it reaches a specified value. Appendix I-b and I-c shows the detailed result.

3.2.1.3 Soundness Test: The purpose of this test is to observe the expansion of cement paste. This reveals the ability of hardened cement to retain its volume after setting. This was carried out in accordance with BS 4550-3:1978 Appendix I-d shows the result.

3.2.1.4 Specific Gravity Test (g/cm^3): This is the physical properties of the material which is defined by mass of a unit volume of a material substance, expressed as grams per cubic centimetre (g/cm^3). The test was conducted in accordance with BS 4550-3:1978, using the density bottle (Pycnometer method). Appendix I-e shows the specific gravity of cement.

3.2.2 Aggregates (Fine and Coarse)

The fine aggregate and the coarse aggregate were obtained in Samaru area in Zaria, located within latitude $11^{\circ} 17'N$ and longitude $7^{\circ} 63'E$. The tests carried out includes, particle size distribution analysis, specific gravity and bulk density.

3.2.2.1 Sieve Analysis (grading): Sieve analysis was conducted on the aggregates sample (fine and coarse aggregates) with various sieve sizes in accordance with BS 812: Part 103; 1985 as shown in Appendix I-f and I-j for fine and coarse aggregates respectively.

3.2.2.2 Specific gravity Test: The specific gravity test was carried out on fine and Coarse aggregate. This was done in accordance with BS 812 part 2; 1995. Appendix I-g and I-k shows the result.

3.2.2.3 Bulk density (kg/m^3): The test was conducted in accordance with BS 812 part 2; 1995 using the density cylinder and water. Appendix I-h and I-l shows the result obtained.

3.2.2.4 Moisture Content of Sand (%): The moisture content test was conducted on the fine aggregate in accordance with BS 812 part 109; 1990. Appendix I-i and I-o shows the result.

3.2.2.5 Aggregate Crushing Value (%): This test was conducted on the coarse aggregate in accordance with BS 812 part 110; 1990 and the results is presented in Appendix I-n

3.2.2.6 Aggregate Impact Value (%): This test was conducted on the coarse aggregate in accordance with BS 812 part 112; 1990 and the results is presented in Appendix I-m

3.2.3 Expanded Polystyrene (EPS) waste

Expanded polystyrene (EPS) is a white, lightweight material that is being used in packaging industry. Manufacturers rely on EPS packaging because of its ability to prevent or minimize product damage during transit and its excellent insulation properties. Plate III shows the EPS as a solid waste in dumpsites within Ahmadu Bello University, Zaria, Main campus, while Plate IV shows the EPS after Shredding. The detailed results on the bulk density and specific gravity of EPS are presented in Appendix I-p and I-q.



Plate III: A waste form of EPS



Plate IV: Shredded EPS

3.3 Mix Design for Concrete

The mix design used for preparing the concrete was based on an absolute volume method given by Neville (2003). A mix ratio of 1:2:4, water-cement ratio of 0.5 and characteristic strength of 25N/mm^2 (Grade 25 concrete) was used for the concrete mix design. The mix proportion for each specimen is presented in Table 3.1.

$$V_W + V_C + V_{F.A} + V_{C.A} = 1\text{m}^3 \quad (3.1)$$

Where V_W , V_C , $V_{F.A}$, $V_{C.A}$ are volumes fraction of water, cement, fine aggregate and coarse aggregate respectively. With the mix ratio 1:2:4 and water-cement ratio of 0.5 by weight.

Where:

$$V_X = \frac{\text{mass of sample X}}{\text{Specific gravity of sample } (P_X) \times \text{Density of water } (1000\text{kg/m}^3)}$$

(3.2)

Then eqn. (3.1) becomes:

$$\frac{W}{(P_W * 1000)} + \frac{C}{(P_C * 1000)} + \frac{F.A}{(P_{F.A} * 1000)} + \frac{C.A}{(P_{C.A} * 1000)} = 1 \quad (3.3)$$

Where:

W = weight of water, C = weight of cement, F.A = weight of fine aggregate, C.A = weight of coarse aggregate

$$\frac{W}{C} = 0.5, \quad \text{therefore the weight of water W then becomes } W = 0.5C$$

$$\frac{0.5C}{(1 * 1000)} + \frac{C}{(3.15 * 1000)} + \frac{2C}{(2.52 * 1000)} + \frac{4C}{(2.70 * 1000)} = 1 \quad (3.4)$$

Where C denotes the weight of cement and the value of specific gravity of materials are determined from the experiment.

Which implies that $C = 323\text{kg/m}^3$

Therefore, the concrete will have the following batch quantities for the control specimen, in which all other parameters are kept constant and coarse aggregate varies with different EPS percentage. Batch by weight was used except for the EPS which was batched by volume.

Water = 162 kg/m^3

Cement = 323 kg/m^3

Fine aggregate = 646 kg/m^3

Coarse aggregate = 1292 kg/m^3

Table 3.1: Mix Proportion per Specimen

Mix EPS (%)	Water (kg/m³)	Cement (kg/m³)	Sand (kg/m³)	Granite (kg/m³)	EPS (kg/m³)	EPS (m³/ m³)
Control	162	323	646	1292	0	0
5	162	323	646	1227	64.6	0.065
10	162	323	646	1163	129.2	0.13
15	162	323	646	1098	193.8	0.19
20	162	323	646	1034	258.4	0.26
25	162	323	646	969	323	0.32
30	162	323	646	904	387.6	0.39
35	162	323	646	840	452.2	0.45
40	162	323	646	775	516.8	0.52
45	162	323	646	710.6	581.4	0.58
50	162	323	646	646	646	0.65

3.4 Mixing of Specimen

Expanded polystyrene were obtained from dumpsite within samara campus, ABU Zaria, shredded into Sizes of 5-6mm with a perforated metal sheet having a diameter of 6mm as shown in plate III and IV. The shredded EPS were weighed by volume as shown in plate V. Other materials used in the concrete mix such as cement, fine aggregates, coarse aggregates and water were also weighed as shown in plate VI, which were weighed accordingly and

accurately following the calculation mentioned in Table 3.1. Hand mixing was adopted throughout the mixing process of the experimental work as shown plate VII. Plate VIII, plate IX, and plate X shows the process of compaction with tamping rod, process of curing and the specimen after curing respectively.



Plate V: Batching of EPS by Volume



Plate VI: Weighing of other Materials



Plate VII: Hand mixing of Aggregates



Plate VIII: Compaction with Tamping Rod





Plate IX: Curing of Specimen

Plate X: Specimen after Curing

A total numbers of 198 concrete cubes of $150 \times 150 \times 150$ mm in dimension and 165 numbers of beams of size $150 \times 150 \times 750$ mm were produced for the compressive strength and flexural strength testing considering various EPS percentage and also different temperature ranges. Plate XI shows the process of loading the specimen in the furnace.



Plate XI: Loading of Specimen into Furnace

3.5 Workability Test on fresh concrete

3.5.1 Slump

This test is to determine the degree of consistency in wet concrete. The test was conducted to assess the properties of freshly mixed concrete (control mixes) and those with coarse aggregate partially replaced with EPS at 5%, 10%, 15%, 20%, 25%, 30%, 35%, 40%, 45%, 50%. This was carried out in accordance with BS 1881 part 102; 1983. Plate XII shows the process of carrying out the slump test. The detailed result is presented in Appendix I-r.



Plate XII: Slump Test

3. 6 Casting of Concrete Cubes and Beams

After slump test, concrete cubes/beams were cast. The inner surface of concrete moulds $150 \times 150 \times 150$ mm for cubes and $150 \times 150 \times 750$ mm for beams was oiled and the wet concrete poured. The concrete was placed in three layers with each layer compacted using steel rods of 25 mm square size, with minimum of 35 blows per layer and the surface was levelled using a hand trowel. Each concrete specimen was marked by number and manufacturing date for identification. After 24 hours, the concrete cubes were demoulded and cured in a water tank for 28 days.

3.7 Cube Compression Test

After curing for 28 days, the cubes were removed from curing tank, left to air dry then weighed and taken for heat test in the furnace before crushing. The crushing was performed using a Universal compression machine in accordance with BS 1881-116:1983. The load was applied until the specimen failed as shown in plate XIII. The failure load was recorded and the compressive strength was calculated using equation 3.5. The detailed result is presented in Appendix II-a to II-e.

$$f_{cu} = P/A \text{ (N/mm}^2\text{)} \quad (3.5)$$

Where, P is the failure load and A is the cross sectional Area of the cube



Plate XIII: Compression Test

3.8 Flexural Strength Test

Flexural strength test were carried out on the beams of size 150×150×750mm using a three point bending test as set-up in Fig. 3.1, the specimen was simply supported on the two rollers of the machine as shown in plate XIV, which were 600mm apart in accordance with BS 1881-118: 1983, the bending strength was calculated using the formula in equation 3.6. The detailed result is presented in Appendix III-a to III-e.

$$f_b = Pl/bd^2 \quad (3.6)$$

Where, p is the ultimate failure load, l is the length between the supports, b is the width and d is the depth in mm

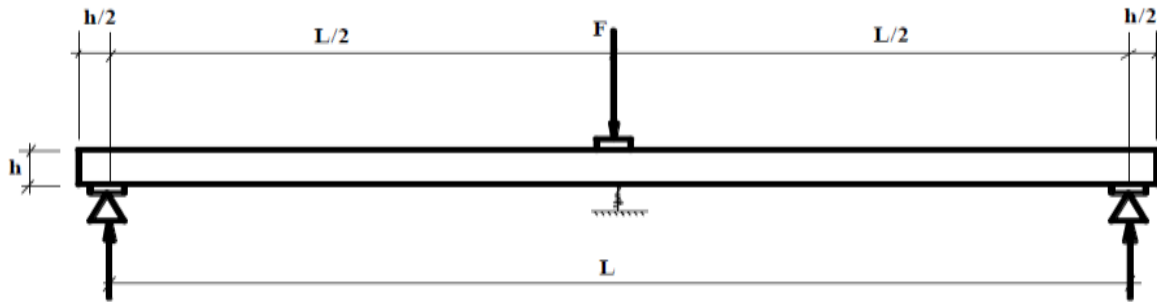


Fig. 3.1: Three-point bending test set-up (Mohammed, 2014)



Plate XIV: Flexural Strength Test

3.9 PROBABILISTIC METHOD

3. 9.1 Reliability Analysis

A Simply Supported reinforced concrete beam of width 300mm and a height of 600mm of 6m length was investigated having the following properties as presented in Table 3.2 under bending modes of failure in order to achieve the following objectives;

- Develop structural configuration of the beam under investigation.
- Develop the resistance model for failure under bending with reference to Euro-code 2 (2004).
- Develop load action models for the structural analysis.

- Develop limit state function
- Develop stochastic model of all basic variables for the performance function
- Develop First Order Reliability Algorithm in order to evaluate the performance function.
- Develop MATLAB- based program to implement the objective function
- Obtain safety indices by varying the load ratio in order to study the effects of EPS content on the safety of the beam under elevated temperatures.

Table 3.2: Beams properties (Chanakya, 2009)

Length of beam (m)	6	Width(b) (mm)	300
Depth (h) (mm)	600	Effective depth (d) (mm)	552
Concrete grade (N/mm ²)	25	Design load (w) = 1.35G _k + 1.5Q _k (kN/m)	25.61
Dead load from beam (kN/m)	7.8	Steel Strength f _y (N/mm ²)	500
Self – weight of beam (kN/m)	4.5	Design Moment M _{Ed} = wL ² /8 (kNm)	115.245
Total dead load (kN/m)	12.3	Ultimate Moment M _{Rd} = 0.167f _{cu} bd ²	381.6
Imposed load on beam (kN/m)	6	Area of Steel (mm ²)	1542

3.9.2 Structural Configuration of the beam

The section of the simply supported beam as well as its cross-section is as presented in fig.

3.2

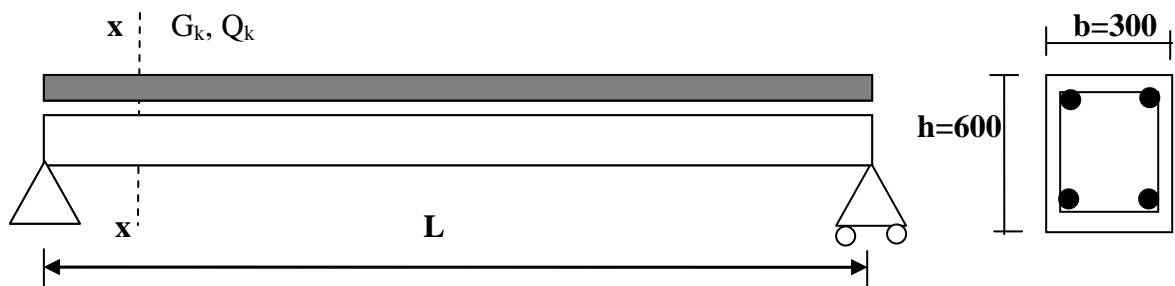


Fig 3.2: Structural configuration of a simply supported beam

Section x-x

3.9.3 Load action Model for Beams under Bending

$$\text{Applied Moment } M_A = wl^2/8 \quad (3.7)$$

$$\text{Where, } w = \gamma_g G_k + \gamma_q Q_k \quad (3.8)$$

Divide both sides by Q_k

$$\frac{w}{Q_k} = \gamma_g \alpha + \gamma_q$$

Where:

$$\alpha = \frac{G_k}{Q_k}$$

$$w = Q_k(\gamma_g \alpha + \gamma_q) \quad (3.9)$$

Substituting for w in equation 3.6, Applied moment M_A then becomes

$$M_A = \frac{Q_k(\gamma_g \alpha + \gamma_q)L^2}{8}$$

$$M_A = 0.125Q_k(\gamma_g \alpha + \gamma_q)L^2 \quad (3.10)$$

3.9.4 Resistance Model for Beams under bending

The resistance model for beams due to bending is generated in accordance with Euro-code 2.

The Moment of resistance M_R may be evaluated as presented by equation 3.11

$$M_R = A_S f_y \left(d - \frac{0.5A_S f_y}{b f_{cu}} \right) \quad (3.11)$$

Where f_{cu} is obtained from the prediction model generated from the experimental data obtained from the linear square regression analysis in the form of straight line equation in equation 3.12.

$$y = mx + c \quad (3.12)$$

Thus, the value for f_{cu} was deduced from equation 3.12

$$f_{cu} = Cons1 * epsc + Cons2 \quad (3.13)$$

Where:

f_{cu} = Compressive strength of concrete cube representing “y”

Cons1 = gradient from the plot of Strength against EPS representing “m”

Epsc = Corresponding EPS content representing “x”

Cons2 = Intercept from the plot of Strength against EPS representing “c”

3.9.5 Limit State Function

The limit state functions for failure due to bending is presented as follows

$$G(X) = M_R - M_A$$

$$G(X) = \left[A_S f_y \left(d - \frac{0.5 A_S f_y}{b f_{cu}} \right) \right] - [0.125 Q_k (\gamma_g \alpha + \gamma_q) L^2 \times 10^6] \quad (3.14)$$

Where terms in equations (3.7 to 3.14) are defined as; M_A is the Applied moment, w is the ultimate design load, L is the Length of beam, γ_g is the dead load factor, γ_q is the Live load factor, G_k is the Dead load, Q_k is the Live load, α is the Load Action, M_R is Ultimate Moment of Resistance of the beam, A_S is Area of Steel, f_y is the Yield Strength of Steel, d is

the Depth, b is the Width of beam, f_{cu} is the Concrete Strength, $G(X)$ is the limit state function due to failure due to bending,

3.9.6 Stochastic Models

The statistical model for all the basic variables for each limit state function is then presented in Table 3.3;

Table 3.3; Statistical models of the basic design variables (JCSS 2001)

S/N	Basic Variable	Distribution Model	Unit	Mean	COV	Standard deviation
1	Imposed load, Q_K	Gumbel	kN/m	6	0.40	8.0
2	Dead load factor, Y_g	Deterministic	-	1.35	-	-
3	Live load factor, Y_q	Deterministic	-	1.5	-	-
4	Load action, α	Deterministic	-	1.3	-	-
5	Length of beam, L	Deterministic	M	6	-	-
6	Area of Steel, A_s	Normal	mm ²	1542	0.10	77.10
7	Yield Strength, f_y	Lognormal	N/mm ²	500	0.05	25.32
8	Depth of beam, d	Normal	Mm	552	0.025	13.80
9	Concrete Strength, f_{cu}	Lognormal	N/mm ²	25	0.17	4.25
10	Width of beam, b	Normal	Mm	300	0.025	7.50

3.9.7 First Order Reliability Method (FORM) Algorithm

The Algorithm for the First Order Reliability Method was developed by;

- i. Obtaining the partial derivatives of failure mode due to bending.
- ii. Isolating the Mean values and as well as the standard deviation from Table 3.3

3.9.7.1 Partial derivation of Failure mode due to Bending

The partial derivatives with respect to bending were obtained as;

$$\frac{\partial G(X)}{\partial Q_K} = -0.125(\gamma_g \alpha + \gamma_q)L^2 \times 10^6 \quad (3.15)$$

$$\frac{\partial G(X)}{\partial A_S} = f_y d - \frac{A_S f_y^2}{b f_{cu}} \quad (3.16)$$

$$\frac{\partial G(X)}{\partial f_y} = A_S d - \frac{A_S^2 f_y}{b f_{cu}} \quad (3.17)$$

$$\frac{\partial G(X)}{\partial d} = A_S f_y \quad (3.18)$$

$$\frac{\partial G(X)}{\partial b} = \frac{0.5 A_S^2 f_y^2}{b^2 f_{cu}} \quad (3.19)$$

$$\frac{\partial G(X)}{\partial f_{cu}} = \frac{0.5 A_S^2 f_y^2}{b f_{cu}^2} \quad (3.20)$$

3.9.7.2 Mean values and Standard Deviation for failure mode due to bending

The mean ($\mu G(X)$) and standard deviation ($\sigma G(X)$) for the failure mode due to bending with their respective derivatives can be obtained as;

$$\mu G(X) = \mu A_S \cdot \mu f_y \cdot \mu d - \left[\frac{0.5 \mu A_S^2 \cdot \mu f_y^2}{\mu b \cdot \mu f_{cu}} \right] - [0.125 \mu Q_K \cdot \mu (\gamma_g \alpha + \gamma_q) L^2 \times 10^6] \quad (3.21)$$

$\sigma G(X)$

$$= \sqrt{\left(\frac{\partial G(X)}{\partial A_S} \right)^2 \cdot (\sigma A_S)^2 + \left(\frac{\partial G(X)}{\partial f_y} \right)^2 \cdot (\sigma f_y)^2 + \left(\frac{\partial G(X)}{\partial d} \right)^2 \cdot (\sigma d)^2 + \left(\frac{\partial G(X)}{\partial b} \right)^2 \cdot (\sigma b)^2 + \left(\frac{\partial G(X)}{\partial f_{cu}} \right)^2 \cdot (\sigma f_{cu})^2 + \left(\frac{\partial G(X)}{\partial Q_K} \right)^2 \cdot (\sigma Q_K)^2} \quad (3.22)$$

Safety Index (β) is computed as presented in equation 3.23 as shown

$$\beta = \frac{\mu G(X)}{\sigma G(X)} \quad (3.23)$$

The flow chart for the computation of β can be represented as shown in Fig 3.3

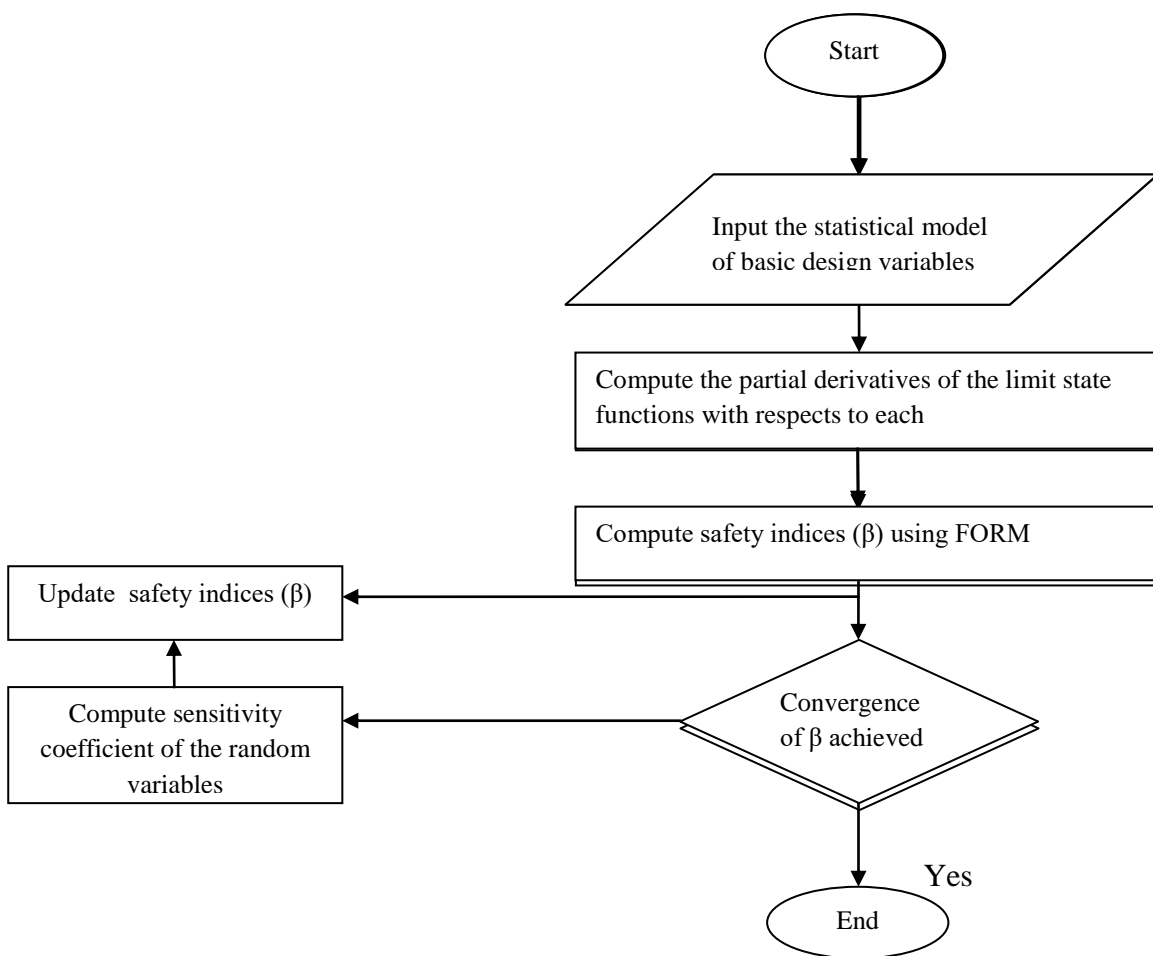


Fig. 3.3; Program Flowchart representation for the computation of β (Hassan, 2016))

3.10 Results from Laboratory Experiments

The summarized results obtained from the laboratory experiments for both the compressive strength test of the cubes and flexural strength of beams are presented in Table 3.4 and 3.5, while the detailed results are presented in Appendix II-a to II-e and IIIa to IIIe respectively. While the results of safety indices obtained from the reliability analysis of reinforced concrete beam are presented in Table 3.6 to 3.11.

Table 3.4; Mean Compressive Strength of Cubes at 28 days in N/mm^2

Temp $^{\circ}C$	EPS CONTENT (%)										
	0	5	10	15	20	25	30	35	40	45	50
28(RT)	26.01	25.26	24.00	21.30	17.85	16.59	15.19	13.67	11.78	10.67	9.19
200	24.00	25.75	25.19	24.59	21.56	18.59	17.69	13.94	12.74	10.95	10.00
400	20.00	25.41	25.01	22.45	20.07	18.01	16.83	13.16	12.55	10.74	9.33
600	12.30	11.70	11.11	10.37	10.07	6.22	4.44	3.96	2.89	2.67	1.63
800	10.96	10.22	7.26	6.52	5.19	4.44	3.11	2.67	2.33	1.19	0.74

Table 3.5; Mean Flexural Strength of Beams at 28 days in N/mm^2

Temp $^{\circ}C$	EPS CONTENT (%)										
	0	5	10	15	20	25	30	35	40	45	50
28(RT)	1.78	1.51	1.24	1.16	1.07	1.07	0.98	0.89	0.80	0.80	0.80
200	1.42	1.42	1.42	1.51	1.60	1.96	1.69	1.24	1.07	0.89	0.89
400	0.89	0.89	0.89	0.98	1.07	1.33	1.16	0.98	0.71	0.71	0.71

600	0.44	0.40	0.44	0.49	0.53	0.71	0.62	0.53	0.36	0.36	0.36
800	0.18	0.18	0.18	0.22	0.27	0.36	0.31	0.18	0.13	0.09	0.09

Table 3.6; Safety Indices for a Reinforced Concrete Beam at various Load ratio and EPS content at 28⁰C (RT)

EPS% α	1.0	1.1	1.2	1.3	1.4	1.5
1.0	6.10	5.91	5.73	5.55	5.38	5.21
5.0	6.10	5.91	5.72	5.54	5.37	5.20
10	6.08	5.90	5.71	5.53	5.35	5.18
20	6.06	5.86	5.67	5.48	5.30	5.12
30	6.00	5.79	5.59	5.40	5.21	5.02
40	5.83	5.62	5.41	5.20	5.00	4.81
50	5.28	5.06	4.84	4.63	4.43	4.23

Table 3.7; Safety Indices for a Reinforced Concrete Beam at various Load ratio and EPS content at 200⁰C

EPS% α	1.0	1.1	1.2	1.3	1.4	1.5
1.0	6.10	5.92	5.74	5.56	5.39	5.22
5.0	6.10	5.91	5.73	5.55	5.38	5.21
10	6.09	5.90	5.72	5.54	5.36	5.19
20	6.07	5.88	5.67	5.50	5.32	5.14
30	6.03	5.83	5.63	5.44	5.25	5.07
40	5.92	5.71	5.50	5.30	5.10	4.91
50	5.61	5.38	5.17	4.96	4.75	4.55

Table 3.8; Safety Indices for a Reinforced Concrete Beam at various Load ratio and EPS content at 400⁰C

EPS% α	1.0	1.1	1.2	1.3	1.4	1.5
1.0	6.10	5.91	5.73	5.55	5.37	5.20
5.0	6.09	5.90	5.72	5.54	5.36	5.19
10	6.08	5.89	5.71	5.52	5.34	5.17
20	6.06	5.86	5.67	5.48	5.30	5.12
30	6.00	5.80	5.60	5.41	5.22	5.04
40	5.89	5.68	5.47	5.27	5.07	4.88
50	5.59	5.36	5.15	4.94	4.73	4.54

Table 3.9; Safety Indices for a Reinforced Concrete Beam at various Load ratio and EPS content at 600⁰C

EPS% α	1.0	1.1	1.2	1.3	1.4	1.5
1.0	5.89	5.67	5.46	5.26	5.06	4.87
5.0	5.82	5.60	5.39	5.18	4.99	4.79
10	5.70	5.48	5.26	5.06	4.85	4.66
20	5.21	4.99	4.77	4.56	4.36	4.17
30	3.84	3.65	3.47	3.29	3.12	2.96
40	0.51	0.43	0.36	0.28	0.20	0.13
50	-2.94	-2.96	-2.97	-2.99	-3.00	-3.02

Table 3.10; Safety Indices for a Reinforced Concrete Beam at various Load ratio and EPS content at 800⁰C

EPS% α	1.0	1.1	1.2	1.3	1.4	1.5
1.0	5.59	5.36	5.15	4.94	4.73	4.54
5.0	5.43	5.20	4.99	4.78	4.57	4.38
10	5.14	4.92	4.70	4.49	4.29	4.10
20	3.98	3.79	3.60	3.42	3.24	3.08
30	1.41	1.31	1.21	1.10	1.01	0.91
40	-1.84	-1.88	-1.91	-1.94	-1.98	-2.01
50	-3.81	-3.83	-3.85	-3.86	-3.88	-3.90

Table 3.11; Safety Indices for Reinforced Concrete Beam at various Temperatures and EPS content at Load ratio (α) of 1.0

EPS% Tempt⁰C	1.0	5.0	10	20	30	40	50
RT	6.10	6.09	6.08	6.06	6.00	5.84	5.28
200	6.10	6.09	6.09	6.07	6.03	5.92	5.61
400	6.09	6.09	6.08	6.06	6.01	5.89	5.59

600	5.89	5.82	5.70	5.21	3.84	0.51	-2.94
800	5.59	5.43	5.14	3.98	1.41	-1.84	-3.81

CHAPTER FOUR

RESULTS AND DISCUSSION

4.1 Properties of Constituent Materials

The properties of constituent materials used which includes Cement, fine aggregates, coarse aggregates and EPS as compared with their standard requirement as per codes specification are presented below.

4.1.1 Properties of Cement (Dangote cement)

The test results for the properties of cement as compared with standard specifications are presented in Table 4.1. It shows that the cement samples satisfies the provision of code of practice in term of consistency, Initial and final setting time, specific gravity and soundness.

Therefore, the dangote cement used satisfied the code specifications for ordinary Portland cement.

Table 4.1: Summary of

Description of Test	Average result	Codes
Physical Property	obtained	Results Obtained, Codes Specification
Normal Consistency (%)	230.5	2.50 – 2.75 26-33
Initial Setting time (min)	121	Min 45
Final Setting time (min)	15286	1500-2000 Max 600
Specific gravity	3.15	3.15
Moisture content (%)	2.00	Max 2 Max 10
of fine aggregate		
Aggregate Impact Value (%)	19	Max 25

Physical Properties of Cement

4.1.2 Properties of Aggregates

4.1.2.1 Physical Properties

of Aggregates

The results obtained for the physical properties of Aggregates and their comparisons to codes are presented in Table 4.2. From the value obtained, it shows that the materials meet specification requirements for quality aggregates.

Table 4.2: Summary of Physical Properties of Aggregate

Aggregate Crushing Value (%)	20	Max 25
Specific gravity of coarse aggregate	2.70	2.50 – 2.75
Bulk density of coarse aggregate	1700	1500-2000
Moisture content (%) of coarse aggregate	1.52	Max 2

4.1.2.2 Particles Size distribution of fine and coarse aggregates

The particle size distribution curve for fine aggregates are presented in Fig. 4.1 and it shows that the curve falls within Zone II envelopes, which indicates that the sand is good in making concrete..

Fig. 4.2 shows the particle size distribution for coarse aggregates and it was observe that the size of aggregates with a greater percentage passing is at 19mm, which indicates that the nominal size for the coarse aggregates used is 19mm.

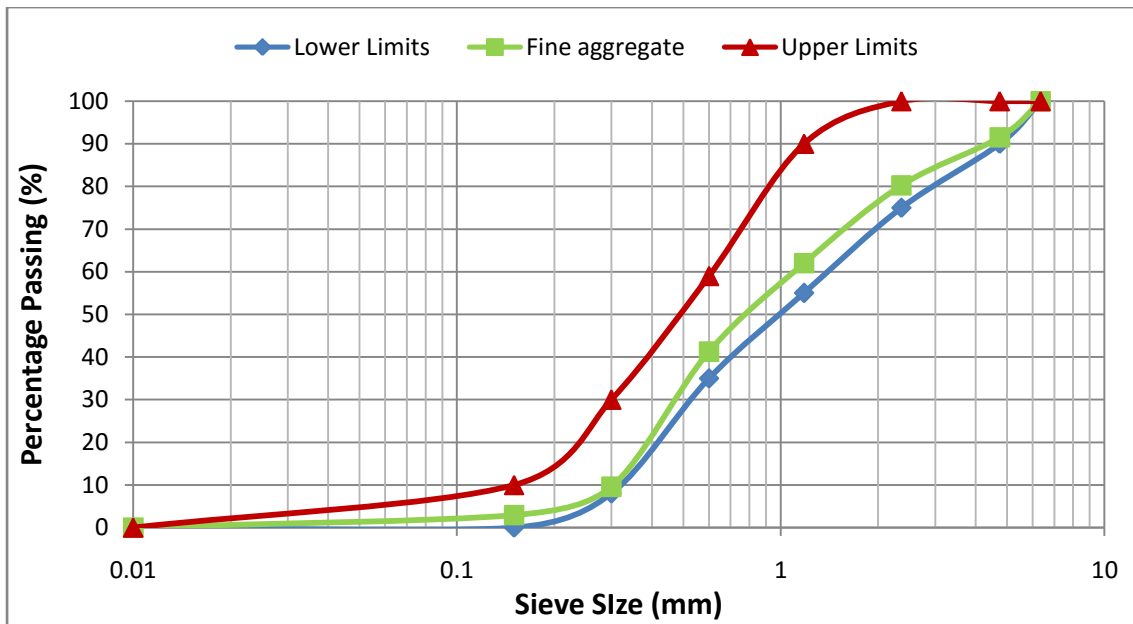


Fig 4.1; Grain Size distribution curve for fine aggregate

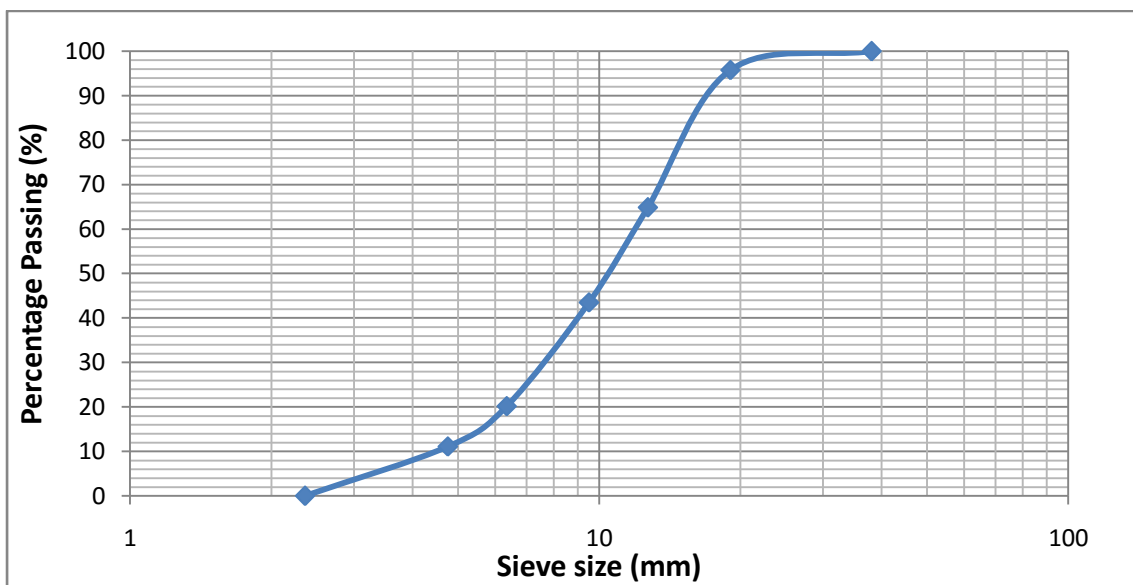


Fig. 4.2; Grain Size distribution curve for coarse aggregate

4.1.3 Properties of EPS

The results obtained for the properties of Expanded Polystyrene is presented in Table 4.3 and from the results of the specific gravity which is 0.069 and the bulk density which is 12.15, its indicates that EPS is a lightweight materials.

Table 4.3: Properties of Expanded Polystyrene

Description of Test	Results obtained
Specific gravity	0.069
Bulk density (kg/m ³)	12.15
Particle size (mm)	5-6

4.2 Variation in Slump

The difference in slump with varying EPS content in the mix is presented in Table 4.4 and it was observed that the slump increases as the EPS content increases in the mix. This might be as a result of inability of EPS to absorb water, leaving the remaining aggregates in the mix to take up the available water.

Table 4.4: Variation in Slump

EPS Replacement (%)	0	5	10	15	20	25	30	35	40	45	50
Slump (mm)	5	5	10	15	20	30	40	45	50	55	65

4.3 Results of Compressive Strength Test

A graph of the cube compressive strength against Temperature is presented in Fig. 4.3, while that of the cube compressive strength against the percentage of EPS is presented in Fig. 4.4.

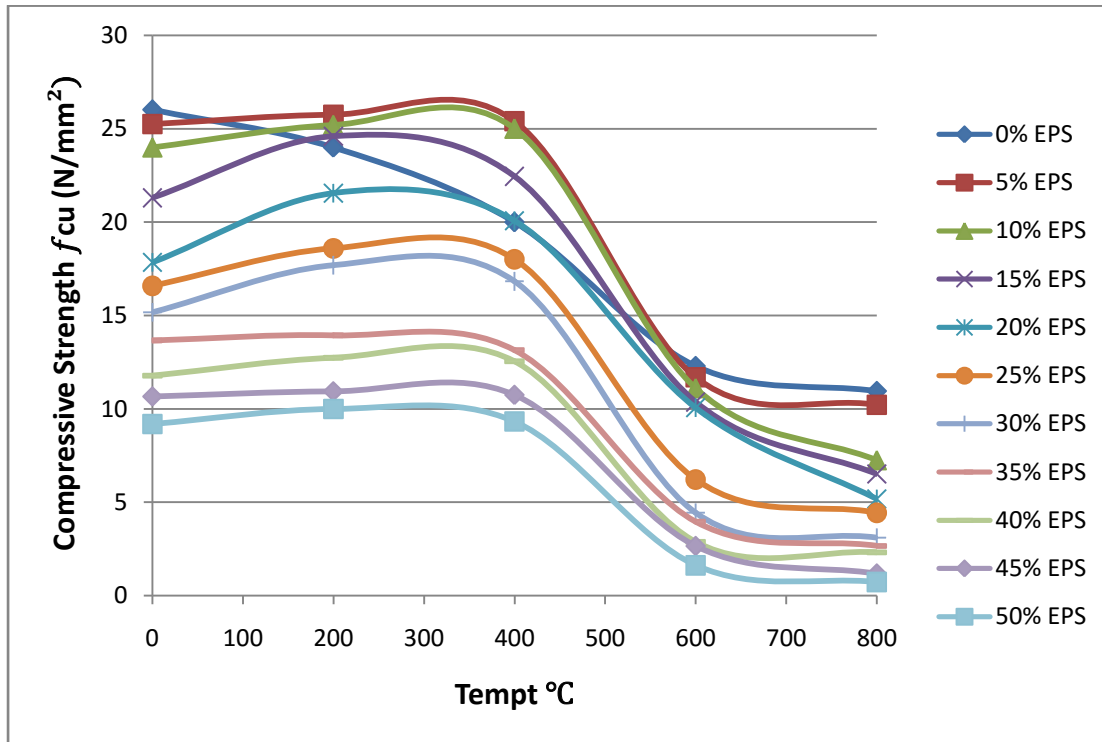


Fig 4.3: Cube compressive strength against Temperature

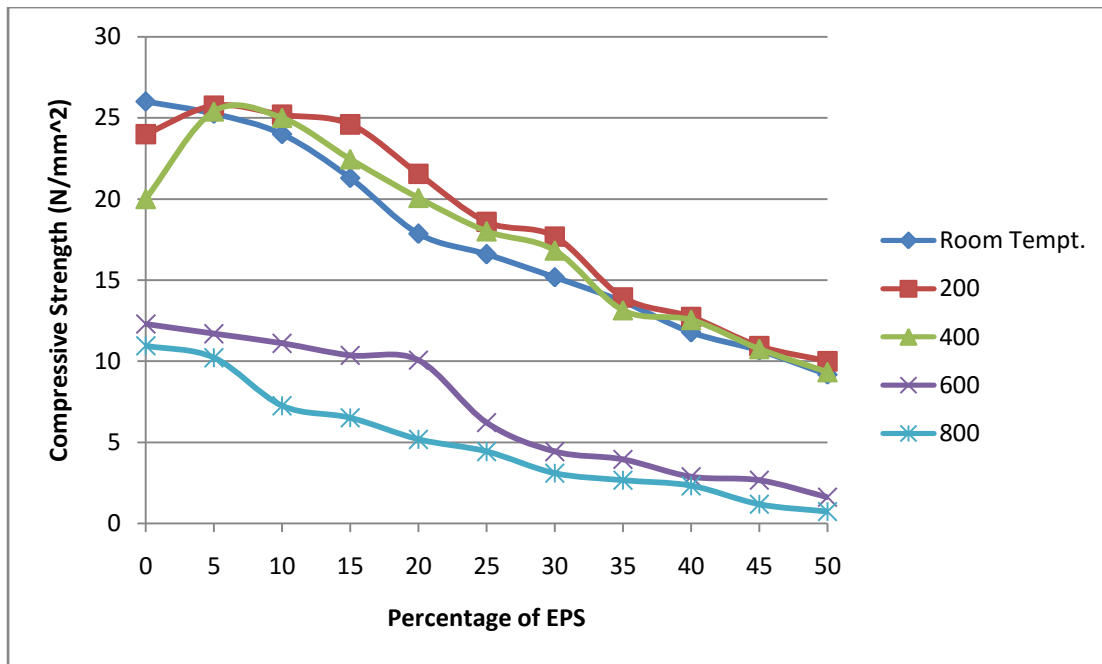


Fig 4.4: Cube compressive strength against percentage of EPS

Fig. 4.3 shows the relationship between the Cubes Compressive strength of concrete at different temperatures and at various EPS content. It was observed that the compressive strengths of the cubes at room temperature decreases as the EPS percentage increases. This might be as a result of large voids created in the mix by EPS due to its low specific gravity and also its low bulk density.

At 200⁰C and 400⁰C, an increased in compressive strength was observed for (5, 10, 15)% EPS content respectively as compared to 0% EPS content. The increment at this percentage inclusion of EPS might be as a result of low movement of heat in air in the closed cells structure of EPS which reduces moisture loss and also the lesser voids spaces created by EPS.

At 600⁰C and 800⁰C, a drastic decreased in the compressive strength was observed for EPS content of (5, 10, 15, 20, 25, 30, 35, 40, 45, 50) % as compared to 0% EPS. This implies that EPS has negative effect in concrete been exposed to temperatures above 400⁰C. This might be as a result of high exposure of heat on the Concrete, which melts off the EPS, since

according to European manufacturer of EPS (EUMEPS), EPS starts to melt at 100°C. It can be concluded that at this point the heat inside the concrete is above 100°C which the EPS could no longer withstand.

Fig. 4.4 shows the relationship between the Cubes Compressive strength of concrete at different EPS content and at various temperatures. It was observed that the compressive strength at 0% EPS content decreases as the temperatures increases. These shows the adverse effect of high temperature has on normal aggregates concrete due to moisture loss.

An increment in strength was observable for concrete containing EPS which was exposed to temperature from 200°C to 400°C as compared to those at room temperature. This implies that the presence of EPS in the mix at this stated temperatures helps to reduce the transfer of heat in its closed cells structures which contains 98% of air and 2% polystyrene.

However, it was observed that the designed target strength of 25N/mm² for the EPS concrete was still achievable at 400°C temperature at 10% EPS content.

4.4 Results of Flexural Strength Test

The plots of Flexural strength against EPS content is as shown in Fig. 4.5

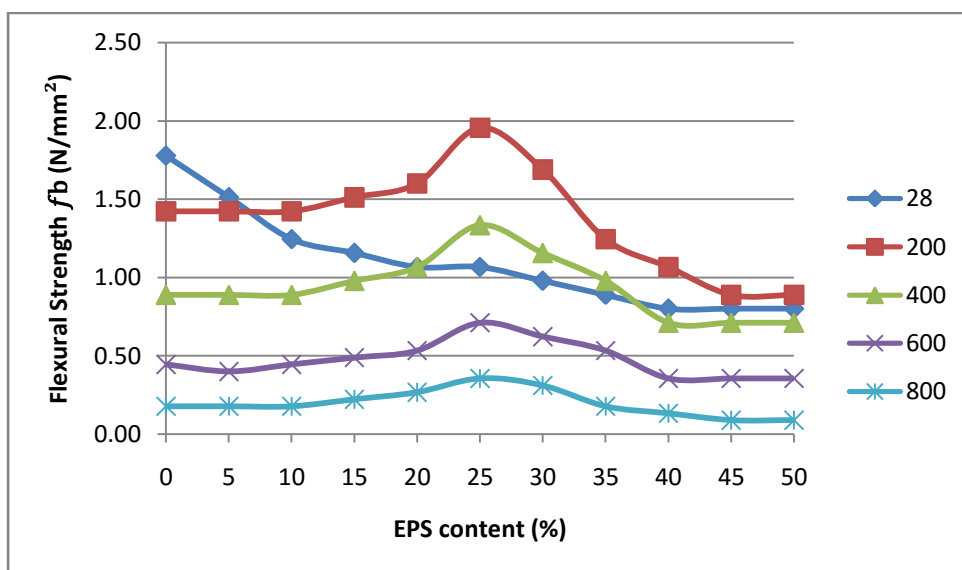


Fig. 4.5: Flexural strength against EPS content

Fig. 4.5 shows the relationship between flexural strength and EPS content at various temperatures. It was observed that at room temperature (28°C), the flexural strength decreases slightly as the EPS content increases as compared to 0% EPS.

At 200°C to 800°C , it was observed that there was no change in the strength up to 10% EPS content. But from 15% EPS to 25% EPS, a slight increase in strength was noticed where further addition of EPS content above 25% causes the strength to decrease slightly. At 25% EPS content, it can be seen that the flexural strength was maximum at 200°C temperature.

4.5 Physical Properties of Concrete at Elevated Temperatures

The following were the physical properties observed after exposure;

Colour change – the colour of the concrete cubes went from being grey at ordinary room temperature and 200°C to clayish brown at 400°C to darkish grey at 600°C and above as

shown in Plate XV



Plate XV: Colour difference after exposure to temperatures

Emergence of small honeycomb- after exposure to temperature of 600⁰C and above were observed around the concrete cube which signifies the original space being occupied by the EPS around the concrete before being melts off. This is as shown in Plate XVI



Plate XVI: Specimen after exposure to high temperature

4.6 Regression Analysis of Compressive Strength and EPS Content

Linear regression analysis was conducted on the cube compressive strength in order to investigate the correlation between compressive strength and percentage of EPS content in the concrete mix. Least square regression model was generated for various temperature values as shown in Fig 4.6 to 4.10 using Microsoft Excel 2007, in which the compressive strength is the dependent variable while EPS percentages is the independent variable. The least square regression model is given by:

$$f_{cuRT} = -0.358EPS_{RT} + 26.36 \quad (4.1)$$

$$f_{cu200} = -0.348EPS_{200} + 27.35 \quad (4.2)$$

$$f_{cu400} = -0.307EPS_{400} + 25.19 \quad (4.3)$$

$$f_{cu600} = -0.241EPS_{600} + 13.05 \quad (4.4)$$

$$f_{cu800} = -0.203EPS_{800} + 10.04 \quad (4.5)$$

Where, f_{cuRT} is the compressive strength of concrete cubes at 24⁰C (room temperature), EPS_{RT} is corresponding Expanded Polystyrene waste content at room temperature, f_{cu200} is the compressive strength of concrete cubes at 200⁰C, EPS_{200} is corresponding Expanded Polystyrene waste content at 200⁰C, f_{cu400} is the compressive strength of concrete cubes at 400⁰C, EPS_{400} is corresponding Expanded Polystyrene waste content at 400⁰C, f_{cu600} is the compressive strength of concrete cubes at 600⁰C, EPS_{600} is corresponding Expanded Polystyrene waste content at 600⁰C, f_{cu800} is the compressive strength of concrete cubes at 800⁰C, EPS_{800} is corresponding Expanded Polystyrene waste content at 800⁰C.

Fig. 4.6, 4.7, 4.8, 4.9 and 4.10 shows the Least Square Regression Plot of Cubes Compressive Strength and Percentage of EPS at Room Temperature, 200⁰C, 400⁰C, 600⁰C, 800⁰C respectively, having the correlation (R^2) of 0.984, 0.934, 0.856, and 0.947. Since these values of R^2 are closer to 1, It means the relationship between cube strength and EPS content at various temperatures are highly correlated.

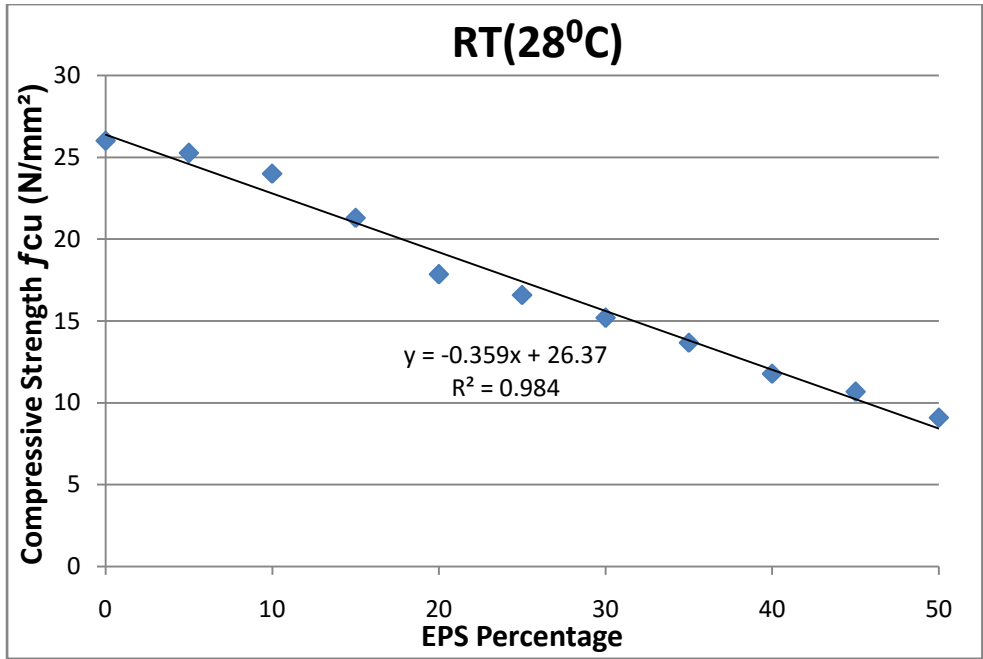


Fig 4.6; Least Square Regression Plot of cube Compressive Strength and EPS content at RT

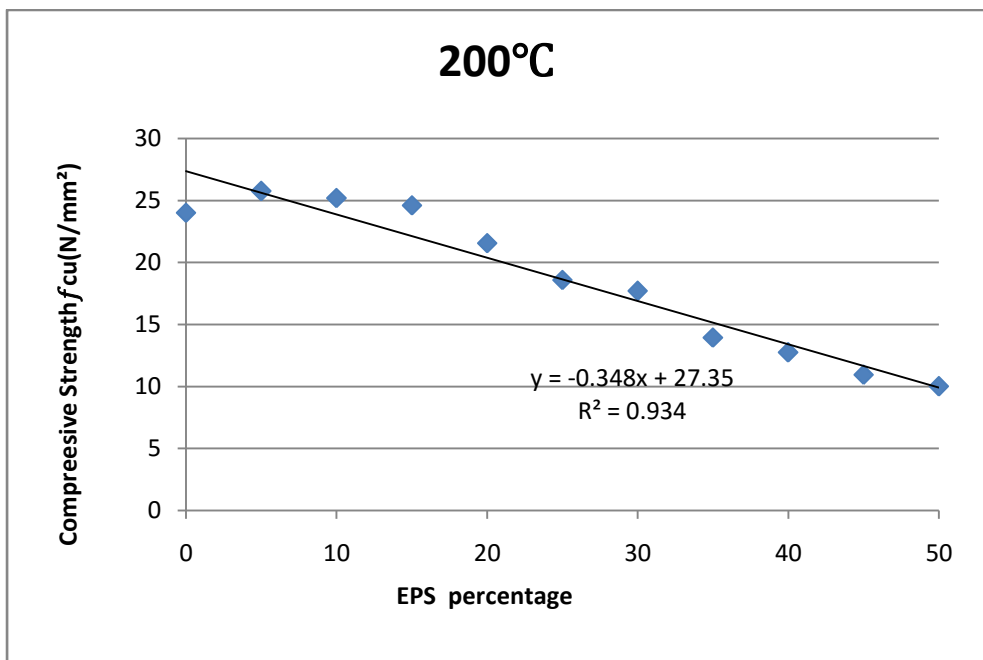


Fig 4.7; Least Square Regression Plot of cube Compressive Strength and EPS content at 200⁰C

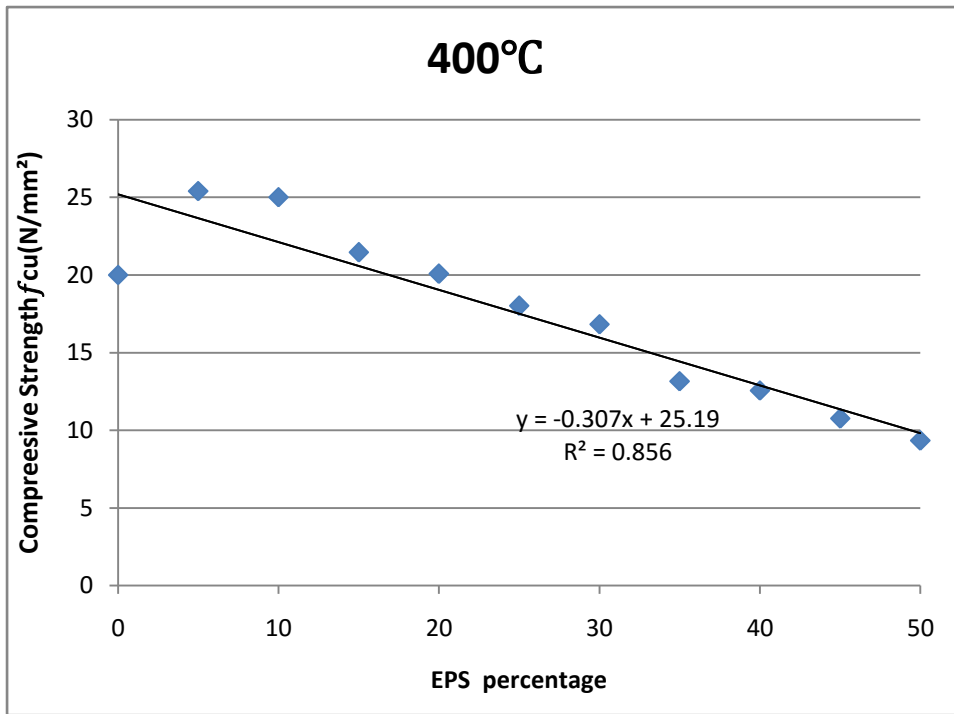


Fig 4.8; Least Square Regression Plot of cube Compressive Strength and EPS content at 400°C

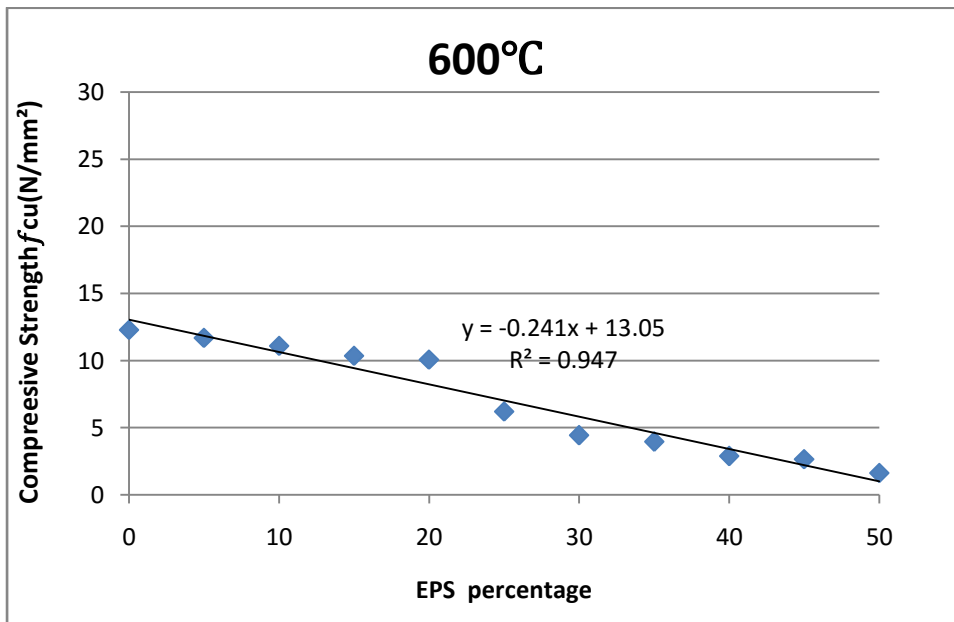


Fig 4.9; Least Square Regression Plot of cube Compressive Strength and EPS content at 600°C

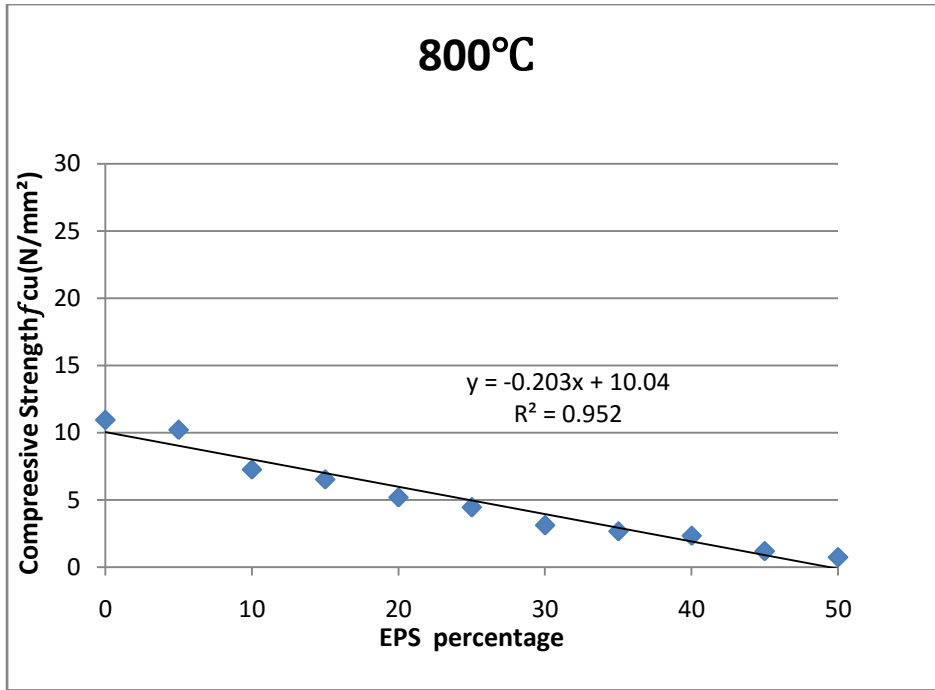


Fig.4.10; Least Square Regression Plot of cube Compressive Strength and EPS content at 800⁰C

4.7 Computation of Safety Indices

To compute the safety Indices at various temperatures, the limit state equation for the Bending mode of failure used according to Eurocode 2, 2004, is as follows;

$$G(X) = \left[A_s f_y \left(d - \frac{0.5 A_s f_y}{b f_{cu}} \right) \right] - [0.125 Q_k (\gamma_g \alpha + \gamma_q) L^2 \times 10^6] \quad (4.6)$$

Where f_{cu} for various temperatures is obtained in equation (4.1) to (4.5), this implies that the value of f_{cu} in equation (4.6) can be replaced by equation (4.1) to (4.5) in the limit state equation for the reliability analysis depending on the temperature being considered. MATLAB programming language used to develop the computer program for the reliability analysis is presented in Appendix IV.

The safety indices generated with respect to the MATLAB program are as presented in the graphs in Figs. 4.11 to 4.16

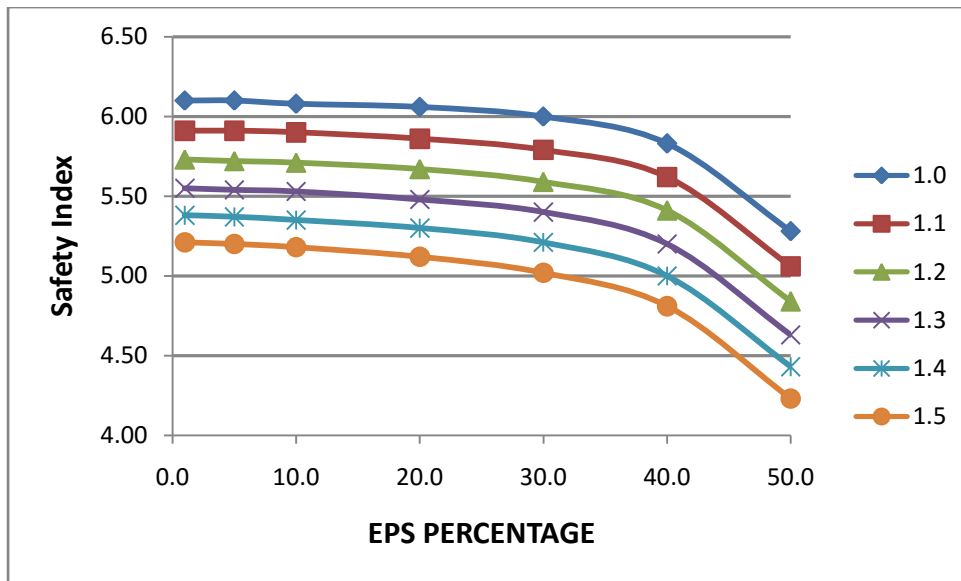


Fig.4.11; Relationship between Safety Index and EPS content at RT at various load ratios

Fig.4.11 shows the plot of safety index at varying EPS content and varying load ratio under room temperature. It was observed that there is a slight decreased in their safety index at different load ratio as the EPS content increased. But drastic decreased were noticed at EPS content greater than 40%. For instance, the safety index for failure due to bending decreases from a value **6.10** (1.0% EPS) to **5.28** (50% EPS) for 1.0 load ratio, while 1.5 load ratio gives **5.21** (1.0% EPS) to **4.23** (50% EPS). This implies that for the range of values of load ratio considered, the beam can be considered to be safe for the bending mode of failure.

The same trend was observed in Figs. 4.12 and 4.13, which shows the relationship between safety indices and EPS content at 200⁰C and 400⁰C. But tend to have higher safety index as compared to room temperature. For instance, the safety index at 200⁰C decreases from **6.10** (1.0% EPS) to **5.61** (50% EPS) for load ratio 1.0, while 1.5 load ratio was **5.22** (1.0% EPS) to **4.55** (50% EPS). Likewise the safety index at 400⁰C decreases from **6.10** (1.0% EPS) to **5.59** (50% EPS) for load ratio of 1.0, while load ratio of 1.5 was **5.20** (1.0% EPS) to **4.54** (50% EPS).

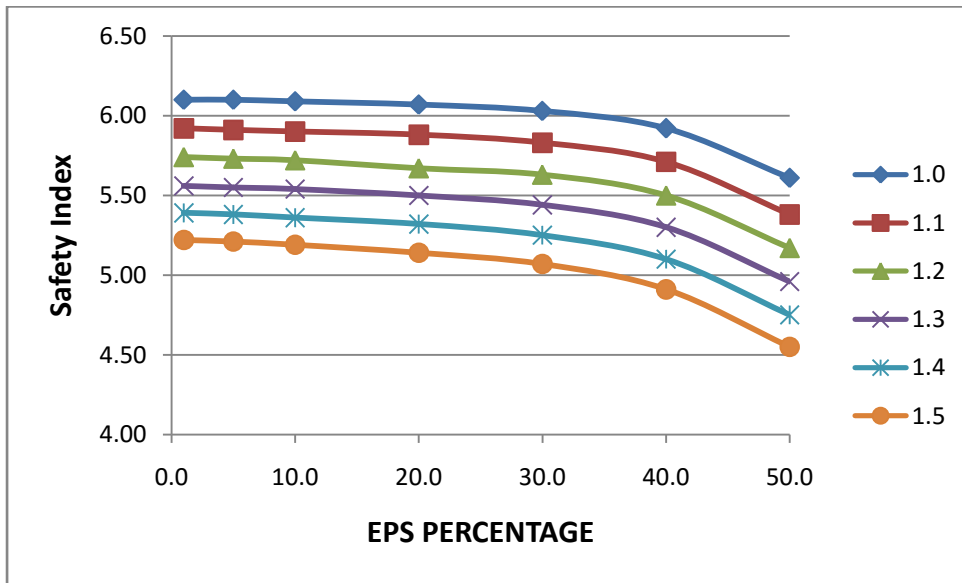


Fig 4.12; Relationship between Safety Index and EPS content at 200⁰C at various load ratios

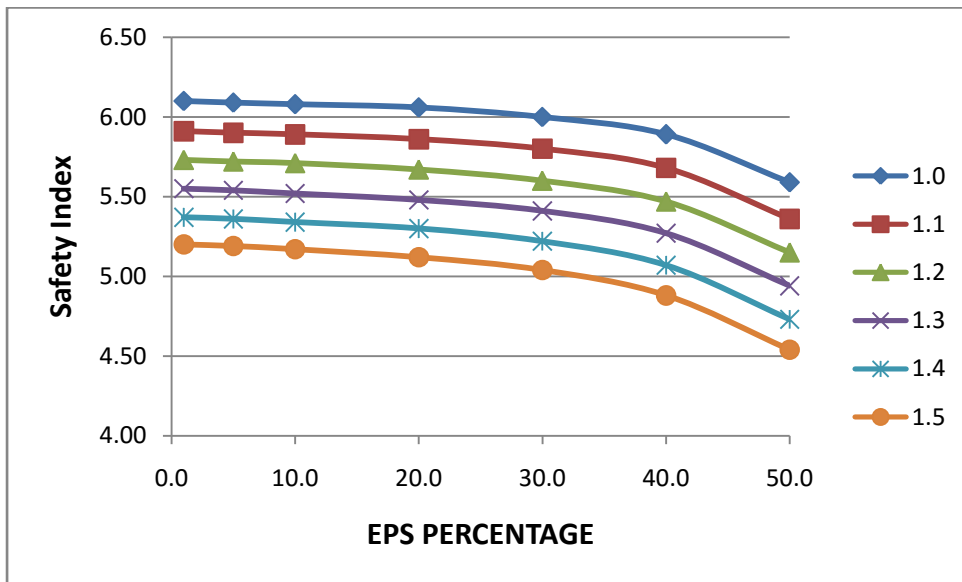


Fig. 4.13; Relationship between Safety Index and EPS content at 400⁰C at various load ratios

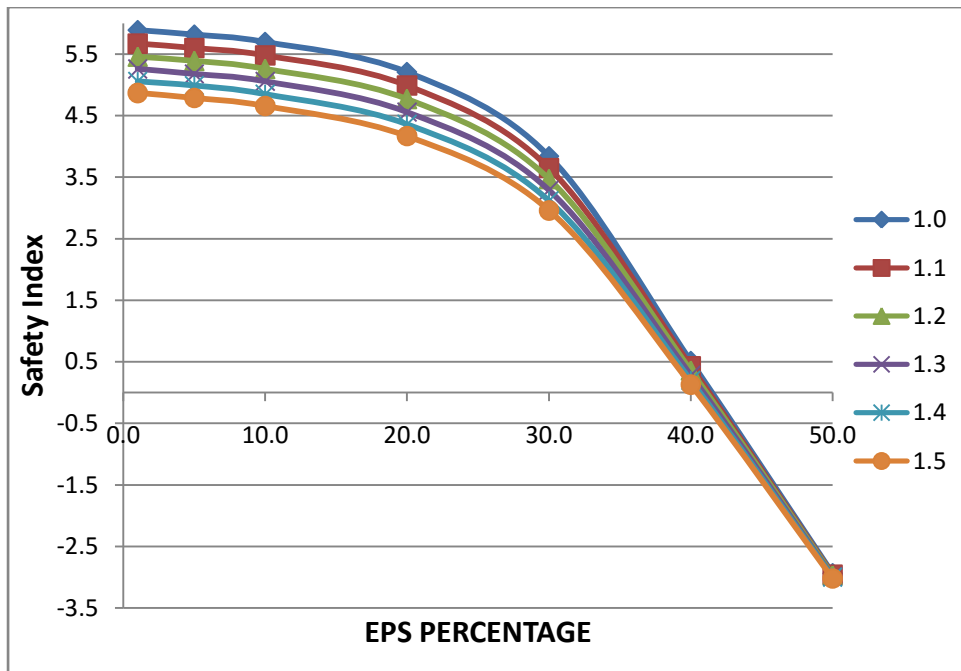


Fig. 4.14; Relationship between Safety Index and EPS content at 600°C for various load ratios

Fig. 4.14 shows the relationship between safety index and EPS content at 600°C for various load ratios. From the plots, it was observed that the safety index value at 1.0 load ratio decreases from **5.89** (1.0 % of EPS) to **3.84** (30% of EPS), while at 40% of EPS its value was **0.51** and 50% EPS gives a negative safety index of **-2.94**. Likewise at 1.5 load ratio, the safety indices decreases from **4.87** (1.0% of EPS) to **2.96** (30% of EPS), **0.13** for 40% EPS and a negative safety index of **-3.02** for 50% EPS. This negative value for safety indices signifies that the beam has failed, thus to guide against negative safety index and to also accommodate all the load ratios considered, the EPS content should be between 25% to 30% at this temperature, considering 3.8 as the level of safety.

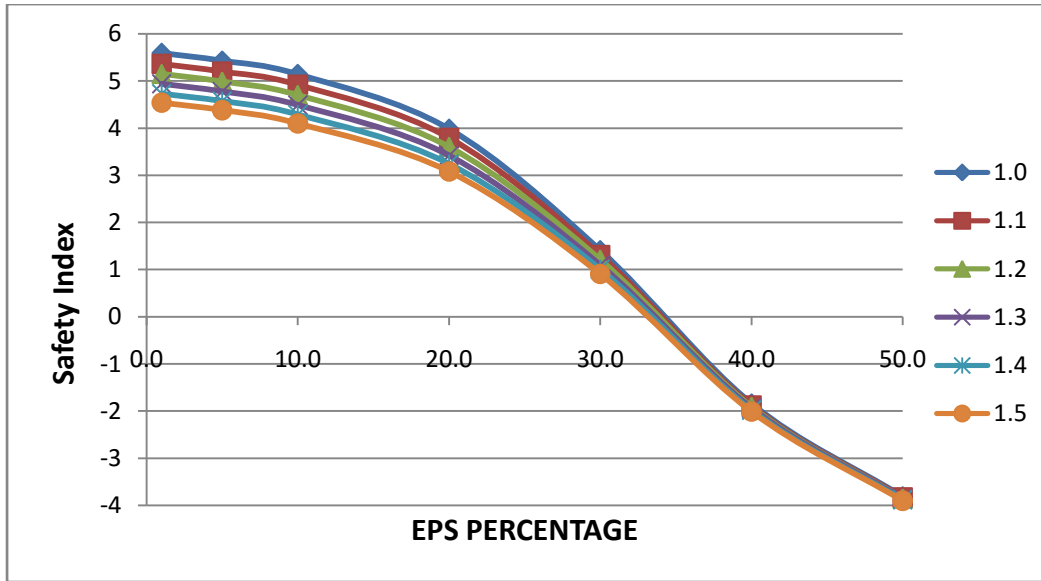


Fig. 4.15; Relationship between Safety Index and EPS content at 800°C for various load ratios

Fig. 4.15 shows the relationship between safety Index and EPS content at 800°C for various load ratios. It was observed from the plot that the values of safety index decreases from **5.59** (1.0% of EPS) to **1.41** (30% of EPS) at 1.0 load ratio, while 40% and 50% gives a negative safety indices of **-1.84** and **-3.81** respectively and also from **4.54** (1.0% of EPS) to **0.91** (30% of EPS) for 1.5 load ratio, while 40% and 50% gives a negative indices of **-2.00** and **-3.90** respectively. This implies that the beam is considered less safe as the EPS content increases and to also accommodate for all the load ratios been considered, the EPS content should be between 15% to 20% at this temperature.

The convergence of safety indices observed at fig 4.14 and fig 4.15 at 30% EPS content and above for temperatures at 600°C and 800°C implies that variation in load ratio has no significant effects on the beam.

Generally, it can be deduced that maximum safety indices was observed at a load ratio of 1.0 considering Fig. 4.11 to 4.15.

Thus, the summarized safety indices for each temperature range and EPS content for a load ratio of 1.0 is then presented in Fig. 4.16.

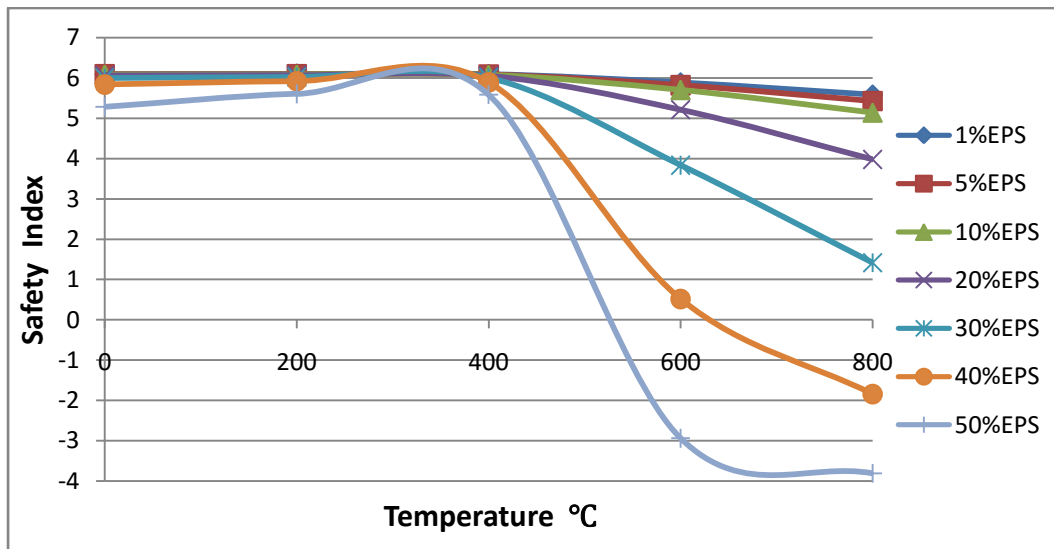


Fig. 4.16; Relationship between Safety Index and Temperature at load ratio of 1.0

From Fig. 4.16, it can be observed that there is high safety index for all percentage of EPS up to a temperature of 400°C, while above 400°C, the beam is considered safe at a maximum EPS content of 20% at 800°C considering the safety level of 3.8.

CHAPTER FIVE

CONCLUSIONS AND RECOMMENDATIONS

5.1 Conclusions

- 1) From the preliminary test on the materials used, the cement used was an ordinary Portland cement, the river sands used conformed to Zone II, which makes it good for concrete work, the coarse aggregate has a nominal size of 19mm, the EPS is a light weight material, while the slump test to check the workability of the mix indicates that EPS does not absorbed water.
- 2) The inclusion of EPS in concrete mix at ordinary room temperature causes reduction in the compressive strength, while inclusion of EPS between 5% and 15% in concrete increased the resistance of concrete to heat better than the control at a maximum temperature of 400°C. The target compressive strength of 25 N/mm² was achievable at 10% EPS content when exposed to temperature of about 400°C, while at temperatures up to 400⁰C, concrete containing EPS content not exceeding 30% can still produced a concrete strength for structural application which must not be less than 17 Mpa as being specified by American Concrete Institute. The flexural strength of plain concrete beam at elevated temperatures was maximum at 25% EPS content, while the beam achieved its maximum flexural strength at 25% EPS content at a temperature of 200⁰C.
- 3) From the regression analysis, mathematical models predicting the compressive strength of EPS concrete exposed to high temperatures for 28 days cube, gives a high correlation value (R^2).

- 4) The safety of reinforced concrete beam due to bending decreases as EPS content increases and as load ratio increases.
- 5) From reliability analysis, Load ratio of 1.0 ($Q_k = 7.8\text{kN/m}$) gives the highest safety indices and it was considered safe up to temperature of 400°C for load ratios up to 1.5 and EPS content of 50%, while above 400°C , the safety of the beam tends to be between 20% and 30% EPS content considering 3.8 as the target safety index as recommended by JCSS (2001).

5.2 Recommendation

- 1) From the experimental point of view, it could be recommended that 30% EPS content in concrete and temperature exposure not beyond 400°C can be used effectively for structural applications. While above this EPS content, the concrete becomes light weight concrete which is still useful for non load bearing structural components.
- 2) The inclusion of EPS content up to 15% will resist temperature better than normal aggregate concrete at a maximum temperature of 400°C .
- 3) Plain concrete beam achieved maximum flexural strength at 25% EPS content under a temperature exposure of 200°C .
- 4) From the reliability approach it could be recommended that with EPS content of 20%, a reinforced concrete beam can withstand failure due to bending with a load ratio of 1.0 ($Q_k = 7.8\text{kN/m}$) at a temperature up to 800°C , provided EPS is encapsulated inside the concrete. This shows that it can be use as alternative building materials at elevated temperature thereby giving enough time for rescue team to safe life and properties.

REFERENCES

- ACI Committee 213R (2003), Guide for structural lightweight aggregate concrete, American Concrete Institute, Farmington Hills.
- Anand, N and Arulraj, G. P., (2011), “The effect of elevated temperature on concrete materials” - A literature review international journal of civil and structural engineering vol. 1, no 4.Pp. 928-938.
- Anthony, N. E., Valentine, A. and Paul, O. A., (2014). “Use of Advanced Plastic Materials in Nigeria: Performance Assessment of Expanded Polystyrene Building Technology System”. American Journal of Engineering Research (AJER), Vol.3, pp.301-308.
- Arioz, O. (2007) “Effect of elevated temperature on properties of concrete,” Fire Safety Journal, Vol.42, pp. 516-522.
- Babayemi, J.O and Dauda, K.T. (2009), “Evaluation of Solid Waste Generation and Disposal Option in Developing Countries: A Case Study of Nigeria”. Journal of Applied Science and Environmental Management, Vol. 13 (3):pp 83-88.
- Babu, K.G and Babu, D.S. (2003) “Behaviour of lightweight expanded polystyrene concrete containing silica fume”. Cement Concrete Research, Vol.33: pp.755–762.
- Balakrishnaiah, D., Balaji, K.V.G.D., and Srinivasa R.P. (2013), “Study of Mechanical Properties of Concrete at Elevated Temperatures - A Review”. International Journal of Research in Engineering and Technology IJRET Vol.:02 Issue:08 pp 317-328 <http://www.ijret.org>
- Bandala, E.E.M, Mendoza D.N, Lopez, R.R, Jaramillo, R.T, Calderon, F.A, Durstewitz, C.P.B, and Jaquez, R.E.N (2015), “Electrochemical and Mechanical Properties of Lightweight Concrete Blocks with Expanded Polystyrene Foam, International Journal of Electrochemical Science vol 10. Pp. 472-485.
- Belkacem, T. and Musa, R. (2010), “Influence of High Temperatures on Surface Cracking of Concrete Studied by Image Scanning Technique”. Jordan Journal of Civil Engineering, Vol.4, No.2.Pp. 155-163.

- Bello, I. (2011). "Suitability of Polystyrene beads waste materials for lightweight concrete". A bachelor in Engineering degree project presented to the Department of Civil Engineering, Ahmadu Bello University, Zaria.
- BS 1881-102:1983 "Methods for determination of slump", British Standards Institution, London.
- BS 1881-116:1983, "Method for determination of compressive strength of concrete", British Standards Institution, London.
- BS 1881-118:1983, "Method for determination of flexural strength of concrete", British Standards Institution, London.
- BS 4550-3:1978, "Methods of testing cement", British Standards Institution, London.
- BS 812-103:1985, "Method for determination of particle size distribution", British Standards Institution, London.
- BS 812-109:1990 "Method for determination of moisture content", British Standards Institution, London.
- BS 812-110:1990 "Method for determination of aggregate crushing value", British Standards Institution, London.
- BS 812-112:1990 "Method for determination of aggregate Impact value", British Standards Institution, London.
- BS 812-2:1995, "Method for determination of density and specific gravity of aggregates", British Standards Institution, London.
- Chanakya, A. (2009). "Design of Structural Elements. Concrete, Steelwork, Masonry and Timber Design to British Standards and Eurocodes". 3rd Ed. Taylor and Francis, USA.
- Chew, M.Y.L., (1993). "The Assessment of Fire Damaged Concrete" Building and Environment, Vol.28
- Dahiru, S. (2014). "Behaviour of Concrete Subjected to Various Elevated Temperatures, A Published Thesis for the award of degree of doctor of philosophy in Civil Engineering, Ahmadu Bello University, Zaria.
- Doroudiani, S. and Omidian, H,(2010) "Environment, health and safety concerns of decorative mouldings made of expanded polystyrene in buildings" – Building and Environment. 45: 647-654
- Dwaikat, M.B. and Kodur, V.K.R. (2009), "Hydrothermal model for predicting fire-induced spalling in concrete structural systems," Fire Safety Journal, vol. 44, no. 3, pp. 425–434.
- EN 1991-1-2: (2002). "Actions on structure. Part 1-2: general actions-actions on structure exposed to fire" Eurocode 1, European Committee for Standardization, Brussels, Belgium

- EN 1992-1-2: (2004). Design of Concrete Structures. Part 1-2: general rules-Structural fire design,” Eurocode 2, European Committee for Standardization, Brussels, Belgium
- Eurocode 0. (2004), “Eurocode-Basis of Structural Design”. British Standards, Commission of the European Communities, Brussels.
- Faber, M. H., and Sorensen, J. D. (2002). Reliability-based Code Calibration. Joint Committee on Structural Safety.
- Ganesh, K., Babu, D., and Babu, S. (2003), “Behaviour of lightweight expanded polystyrene concrete containing silica fume”, Cement and Concrete Research Vol. 33; 755-762.
- Ghasemi, M. R. and Yousefi, M. (2011). Reliability-based Optimization of Steel Frame Structures Using Modified Genetic Algorithm. Asian Journal of Civil engineering (buildings and housing). 12(4): pp. 449-475.
- Gnip, I.Y., Vaitkus, S., Keršulis, V. and Vėjelis, S. (2008) “Long-term prediction of compressive creep development in expanded polystyrene”, Polymer Testing. 27; 378-391
- Gruz, C.R., (1966). “Elastic Properties of Concrete at High Temperature,” *Journal of the PCA Research and Development Laboratories*, Vol. 8, No. 1, pp. 37-45mo
- Handoo, S.K., Agarwal, S. and Agarwal, S. K. (2002). “Physicochemical, mineralogical, and morphological characteristics of concrete exposed to elevated temperatures. Cement Concrete Research., 32(7): 1009-1018.
- Hassan, U., (2016). “Reliability Evaluation of Polythene Fibre Polymer in Reinforced Concrete Beams”, Unpublished Phd thesis. Department of Civil Engineering, Ahmadu Bello University, Zaria.
- Herki, B. A., Khatib, J.M and Negim,.E.M (2013) “Lightweight Concrete Made from Waste Polystyrene and Fly Ash”. World Applied Sciences Journal 21 (9): 1356-1360, IDOSI Publications.
- Ian, A. F., Stephen, W., Jose, L. T., Rechard, O. C.; and Asif, U. (2004), “The Behaviour of Concrete Structures in Fire in Mortars at High Temperature,”.Cement and Concrete Research, Vol. 34, No. 10.
- Idawati, I., A. A. S., Abd latif, S., (2003). Properties of hardened concrete bricks containing expanded polystyrene beads. Proceedings of the 5th Asia-Pacific Structural Engineering and Construction Conference (APSEC). Malaysia.
- ISO 834: Part 1:1987 “Elements of building construction - General requirements for fire resistance testing.” British Standards Institution, London.
- ISO 834-1 (1999). ISO 834-1:1999 Fire Resistance Tests Elements of Building Construction Part 1: General Requirements’, International Organization for Standardization.
- JCSS (2001). Joint Committee on Structural Safety-Probabilistic Model Code. <http://www.jcss.ethz.ch>
- Jianzhuang, X. and Konig, G. (2004). “Study on concrete at high temperature in China”-an overview. Fire Safety

- Kacianauskas, R., Raftoyiannis, I.G., and Wang, J. (2014). "Properties of Concrete at Elevated Temperatures". International Scholarly Research Notices ISRN Vol. 14, Article ID 468510 <http://www.hindawi.com/journals/isrn/2014/468510>
- Kaya, B.A., and Kar, F., (2014), "Thermal and Mechanical Properties of Concretes with Styropor". Journal of Applied Mathematics and Physics, 315 Published Online in Science Research, Vol.2, pp.310-.315, [http://www.scirp.org/journal/jamp; http://dx.doi.org/10.4236/jamp.2014.26037](http://www.scirp.org/journal/jamp;http://dx.doi.org/10.4236/jamp.2014.26037)
- Khoury, G.A. (2008), "Concrete spalling assessment methodologies and polypropylene fibre toxicity analysis in tunnel fires," Structural Concrete, vol. 9, no. 1, pp. 11–18
- Khoury, G.A., (2004) "Effect of fire on Concrete and concrete Structures, Progress in structural Engineering and Material"
- Kigha, F. (2014) "Estimation of the residual strength index of reinforced concrete beams in fire under varying temperature and concrete cover". Unpublished thesis department of civil Engineering, Ahmadu Bello University, Zaria.
- Kodur, V. K. R. and Dwaikat, M. 2008. Flexural response of reinforced concrete beams exposed to fire. Structural Concrete. Vol.9, Pp.45-54.
- Kodur, V.K.R. and Phan, L. (2007), "Critical factors governing the fire performance of high strength concrete systems," Fire Safety Journal, vol. 42, no. 6-7, pp. 482–488, 2007.
- Kodur, V.K.R., Dwaikat, M.M.S. and Dwaikat, M.B.L: (2008), "High-Temperature Properties of Concrete for Fire Resistance Modeling of Structures", American Concrete Institute (ACI) Materials Journal, Vol.105, No.5, pp.517-527.
- Kodur, V.R and Harmathy, T.Z. (2008), "Properties of building materials," in SFPE Handbook of Fire Protection Engineering, P. J. DiNenno, Ed., National Fire Protection Association, Quincy, Mass, USA.
- Kohler, J. (2007), "Reliability of Timber Structure". Institute of Structural Engineering, Swiss Federal Institute of Technology, Zurich.
- Kuhail, Z., and Shihada, S. (2003), "Mechanical Properties of Polystyrene-Lightweight Concrete", Journal of The Islamic University of Gaza, Vol 11, No.2, Pp. 93-114.
- Lee, A. J., Kelly, H., Jagoda, R., Rosenfeld, A., Stubee, E., Colaco, J., Gadgil, A., Akbari, H., Norford, L., Burik, H. (2006). "Affordable, safe housing based on expanded polystyrene (EPS) foam and a cementitious coating". Journal of Material Science, Vol.41, pg6908–6916
- Li, M., Qian, C., and Sun, W., (2004), "Mechanical properties of high-strength concrete after fire," Cement and Concrete Research, vol. 34, no. 6, pp. 1001–1005.
- Maharana, T., Negi, Y.S., and Mohanty, B, (2007) Review Article: "Recycling of Polystyrene", Polymeric- Plastics Technology and Engineering. 46;729-736
- MATLAB (2011). Matlab version 7.5.0 342 release 2011b for Windows. The MATHWORKS

- Mehta, P.K. (1999). Advancement in concrete technology. Concrete International, Vol. 21, pp.27–33
- Melchers, R.E (1999).Structural Reliability Analysis and Prediction. Second Edition, John Wiley and Sons Limited, Chichester, England
- Miled, K., Sab, K. & Le roy, R., (2007). “Particle size effect on EPS lightweight concrete compressive strength: Experimental investigation and modelling”. Mechanics of Materials, Vol.39: pp.222-240.
- Mohammad, M.K. Saif Salah, A. and Ali, A. A. (2009) “Mathematical Models for Prediction of Some Mechanical Properties of Concrete Exposed to Burning
- Mohammed, .K. and Karim, .I. (2015). “Concrete Depth on Moment Capacity of Reinforced Concrete Slab: Safety Performance, Journal of Applied Sciences, Engineering and Technology, Vol 11(6): pp. 610-616
- Mohammed, J. K. (2014). “Reliability-based Analysis and Calibration of Eurocode 5 Design Criteria for a Solid Timber Portal Frame, Unpublished Phd thesis. Department of Civil Engineering, Ahmadu Bello University, Zaria.
- Momtazi, A.S, Langrudi, M.A.M, Haggi, A.K, and Atigh, H.R (2010). “Durability of Lightweight Concrete Containing EPS in Salty Exposure Conditions, 2nd International Conference on Sustainable Construction Materials and Technologies.
- Morsy, M. S., Alsayed, S. H. and Aqel, M., (2010), “effect of elevated temperature on mechanical properties and microstructure of silica flour concrete” International Journal of Civil & Environmental Engineering IJCEE-IJENS Vol.10 No:01
- Morsy, M. S., Rashad, A. M. and El-Nouhy, H. A.,(2009) “Effect of elevated temperature on physico-mechanical properties of metakaolin blended cement mortar,” Structural Engineering and Mechanics, Vol.31, pp. 1-10
- MS Excel (2007). Microsoft Office Excel. Microsoft Corporation, One Microsoft way, Redmond, W.A98052-7329, USA
- Neville, A.M., (2003). “Properties of Concrete,” John Wiley & Son, London pp 1803-1807
- Noumowe, A., (2005), “Mechanical properties and microstructure of high strength concrete containing polypropylene fibres exposed to temperatures up to 200°C,” Cement and Concrete Research, vol. 35, no. 11, pp. 2192–2198.
- Persson, B., (2004) “Fire resistance of self-compacting concrete, SCC”, Materials and Structures, Vol.37, pp 575-584
- Phan, L.T, Lawson, J. R and David, F. L. (2001) “Effects of elevated temperature exposure on heating characteristics, spalling, and residual properties of high performance concrete”. Materials and Structures, Vol. 34, pp 83-91
- Reynolds, M. P. (2008). Risk Assessment of Highway Bridges: A Reliability-based Approach Proceedings of The 2008 IAJC-IJME International Conference.
- Sadrmomtazi, A., Mirgozar Langeroudi, M.A., Fasihi, A., and Haghi, A.K, (2007), “An Investigation on Effect of Using Polypropylene Fibers and Different Cementitious

Materials On Mechanical Properties of EPS Concrete. 3rd International Conference on Concrete & Development. CD07-005.pp 1035-1044

- Sha, W. and Pereira, B.,(2001) “Differential scanning calorimetry study of ordinary Portland cement paste containing metakaolin and theoretical approach of metakaolin activity.,” *Cement Concrete Compos.* Vol.23, pp. 455–461.
- Song, B., Chen, W. W., Dou, S., Winfree, N. A., and Kang, J. H. Strain-rate Effect on Elastic and Early Cell-collapse Responses of a Polystyrene Foam *International Journal of Impact Engineering* 31 2005: pp. 509 – 521.
- Tang, W.C., and Lo, T.Y., (2009), “Mechanical and fracture properties of normal-and high-strength concretes with fly ash after exposure to high temperatures,” *Magazine of Concrete Research*, vol. 61, no. 5, pp. 323–330, 2009.
- Thomas, T., Rajendra, P., Katta, V. and Subhash, .C.Y. (2014), “Partial replacement of coarse aggregates by Expanded Polystyrene beads in Concrete,” *International Journal of Research in Engineering and Technology.* Vol.03, No.1, pp 238-241.
- Uche, O.A.U and Afolayan, J.O (2008), “Reliability – Based Rating for Reinforced Concrete Columns, *Journal of Engineering and Technology*, June . Vol.3 No.1 Pp.1-20
- Wang, H. Y., (2008) “The effect of elevated temperature on cement paste containing GGBFS,” *Cement Concrete Res.*, Vol.30, pp. 992-999.
- www.bst-betostyrene.com Enviro-Development Company Web Site (www.bst-betostyrene.com), perio, Arizona85344, USA.
- Xiaoa, .J. and Falknerb, H. (2006) “On residual strength of high-performance concrete with and without polypropylene fibres at elevated temperatures,” *Fire Safety Journal* Vol.41, pp.115–121.
- Xu, Y., Wong, Y.L., Poon, C.S. and Anson, M. (2001). “Impact of High Temperature on PFA Concrete”, *Cement and Concrete Research*, (31):pp.10
- Zhang, B., Bicanic, N., Pearce, C.J. and Balabanic, G., (2000). “Assessment of toughness of concrete subject to elevated temperatures from complete load-displacement curve-Part1: General introduction. ACI

APPENDIX I: Preliminary Test carried on Constituent Materials

I-a: Consistency of Cement samples

Cement	Water Content %	Needle penetration(mm)	Water-Cement Ratio
Sample I	30.5	6.00	0.31
Sample II	30.6	6.30	0.32
Sample III	30.4	5.70	0.30
Average	30.5	6.00	0.31

I-b: Initial Setting Time of Cement samples

Cement	Starting time	Finishing time	Initial Setting Time (min)
---------------	----------------------	-----------------------	-----------------------------------

Sample I	10:20am	12.22pm	122
Sample II	10:25am	12.25pm	120
Sample III	10:30am	12:31pm	121
Average	10:25am	12:26pm	121

I-c: Final Setting Time of Cement samples

Cement	Starting time	Finishing time	Final Setting Time (min)
Sample I	10:20am	03:05pm	285
Sample II	10:25am	03:14pm	289
Sample III	10:30am	03:14pm	284
Average	10:25am	03:11pm	286

I-d: Soundness of Cement samples

Cement	Initial Measurement (mm)	Final Measurement (mm)	Expansion (mm)
Sample I	5	5	0
Sample II	5	5	0
Sample III	5	5	0
Average	5	5	0

I-e: Specific Gravity of Cement

Serial No.	Observation	Trial	
		1	2
1.	Weight of Specific gravity bottle, W_1 (g)	28.5	28.5
2.	Weight of Specific gravity bottle and dry sample W_2 (g)	54.8	55.3
3.	Weight of Specific gravity bottle + Cement Samples + Kerosene W_3 (g)	87.07	87.57
4	Weight of Specific gravity bottle and Kerosene W_4 (g)	69.2	69.2
5	Weight of Cement Samples only A (g) = $W_2 - W_1$	26.3	26.8
6	Weight of Kerosene used B (g) = $W_3 - W_2$	32.27	32.27

7	Weight of Kerosene only $C (g) = W_4 - W_1$	40.7	40.7
8	Specific gravity of the Cement Sample = $A/(C-B)$	3.12	3.18
9	Average Specific gravity	3.15	

I-f: Sieve Analysis of Fine aggregate

Weight of Sample = 1200g

SIEVE SIZE (mm)	WEIGHT RETAINED (g)	PERCENTAGE RETAINED (%)	PERCENTAGE CUMULATIVE RETAINED (%)	PERCENTAGE PASSING (%)
6.35	0	0	0	100
4.75	102	8.5	8.5	91.5
2.36	135	11.25	19.75	80.25
1.18	219	18.25	38	62
0.60	249	20.75	58.75	41.25
0.30	380	31.67	90.42	9.58
0.15	79.6	6.63	97.05	2.95
Pan	35.4	2.95	100	0

I-g: Specific gravity of fine aggregates

Total Weight of the sample = 500g

SPECIMEN	TRIAL		
	I	II	III
Wt of pycnometer + water (P)	1280	1280	1280
Wt of Sand + pycnometer + water (P_s)	1580	1584	1580
Wt of Sand (B)	500g	500	500
Specific gravity = $\frac{B}{P + B - P_s}$	2.50	2.55	2.50
Average Specific gravity	2.52		

I-h: Bulk density of fine aggregates

Description	TRIAL		
	I	II	III
Wt of empty cylinder W_1 (kg)	1.4	1.4	1.4
Wt of cylinder filled with water W_2 (kg)	4.1	4.1	4.1
Wt of cylinder + Sample W_3 (kg)	5.51	5.57	5.45
Wt of water $W = (W_2 - W_1)$ (kg)	2.7	2.7	2.7
Density of water ρ (kg/m ³)	1000	1000	1000
Volume of water $V = W/\rho$ (m ³)	0.0027	0.0027	0.0027
Wt of Sample $M = W_3 - W_1$ (kg)	4.11	4.17	4.05
Bulk density = M/V	1522	1544	1500
Average bulk density	1522		

I-i: Moisture content of sand (%)

Test Description	Result
Wt of Sample A (g)	500
Wt of Oven dry sample B (g)	490.2
Moisture content w (%) = $100 \times (A - B)/B$	2.00

I-j: Sieve Analysis of Coarse aggregate

Weight of Sample = 3000g

SIEVE SIZE (mm)	WEIGHT RETAINED (g)	PERCENTAGE RETAINED (%)	PERCENTAGE CUMULATIVE RETAINED (%)	PERCENTAGE PASSING (%)

38.1	0	0	0	100
19.05	126	4.2	4.2	95.8
12.7	928	30.93	35.13	64.87
9.52	640	21.33	56.46	43.54
6.35	700	23.33	79.79	20.21
4.76	272	9.07	88.86	11.14
Pan	334	11.14	100	0.00

I-k: Specific gravity of coarse aggregate

Total Weight of the sample = 1000g

SPECIMEN	TRIAL		
	I	II	III
Wt of glass jar + water (P)	2520	2520	2520
Wt of Sample +glass jar + water (P _s)	3150	3142	3156
Wt of Sand (B)	1000g	1000	500
Specific gravity = $\frac{B}{P + B - P_s}$	2.70	2.65	2.75
Average Specific gravity	2.70		

I-l: Bulk density of Coarse aggregates

Using 0.01m³ capacity of cylinder

Test Description	TRIAL		
	I	II	III
Wt of cylinder W ₁ (kg)	1.4	1.4	1.4

Wt of cylinder + Sample W_2 (kg)	17.9	19.3	18
Wt of Sample (M) = $W_2 - W_1$ (kg)	16.5	17.9	16.6
Volume of Cylinder V (m^3)	0.01	0.01	0.01
Bulk density = M/V (kg/m^3)	1650	1790	1660
Average bulk density (kg/m^3)	1700		

I-m: Aggregate impact value Test

Specimen	I	II
Wt of Sample A (g)	500	500
Wt of samples remaining after weighing B (g)	138	144
Wt of sample passing sieve 2.36mm C (g)	71	64
$AIV = \frac{C}{(A - B)} \times 100$ (%)	19.6	18.0
Average AIV (%)	19	

I-n: Aggregate crushing value Test

Specimen	I	II
Wt of Sample A (g)	5000	5000
Wt of left over sample B (g)	1180	1300
Wt of sample passing sieve 2.36mm C (g)	759	754
$ACV = \frac{C}{(A - B)} \times 100$ (%)	19.9	20.4
Average ACV (%)	20	

I-o: Moisture content of Granite (%)

Test Description	Result
Wt of Sample A (g)	2000

Wt of Oven dry sample B (g)	1970
Moisture content w (%) = $100 \times (A - B)/B$	1.52

I-p: Bulk Density of EPS

Test Description	Trial	
	I	II
Wt of empty cylinder W_1 (kg)	1.4	1.4
Wt of cylinder filled with water W_2 (kg)	4.1	4.1
Wt of cylinder + Sample W_3 (kg)	1.4324	1.43321
Wt of water $W = (W_2 - W_1)$ (kg)	2.7	2.7
Density of water ρ (kg/m ³)	1000	1000
Volume of water $V = W/\rho$ (m ³)	0.0027	0.0027
Wt of Sample $M = W_3 - W_1$ (kg)	0.0324	0.03321
Bulk density = M/V	12.0	12.3
Average bulk density	12.15	

I-q: Specific Gravity of EPS

Serial No.	Observation	Trial	
		I	II
1.	Weight of glass jar, W_1 (g)	875	875
2.	Weight of glass jar and EPS sample W_2 (g)	907.7	904.1
3.	Weight of glass jar + EPS Samples + Water, W_3 (g)	1735.1	1731.5
4	Weight of glass jar and Water, W_4 (g)	2150	2150
5	Weight of EPS Samples only A (g) = $W_2 - W_1$	32.7	29.1
6	Weight of Water used B (g) = $W_3 - W_2$	827.4	827.4
7	Weight of Water only C (g) = $W_4 - W_1$	1275	1275
8	Specific gravity of the Cement Sample = $A/(C-B)$	0.073	0.065
9	Average Specific gravity	0.069	

I-r: Variation in slump with EPS (%)

S/No.	EPS Replacement (%)	Height of Cone A (mm)	Height of Concrete B (mm)	Slump A-B (mm)
1	0	300	295	5
2	5	300	295	5
3	10	300	290	10
4	15	300	285	15
5	20	300	280	20
6	25	300	270	30
7	30	300	260	40
8	35	300	255	45
9	40	300	250	50
10	45	300	245	55
11	50	300	235	65

APPENDIX II: Experimental Data Obtained for the Compressive Strength of Cubes

(150×150×150)mm

II-a: Compressive Strength at Room Temperature (RT)

Spec. Mark	EPS %	Date Cast	Wt. before heating	Wt. After heating	Tempt °C	Unit Wt. Kg/m ³	Failure Load (kN)	Comp. Strength (N/mm ²)	Mean Strength
CI CII CIII	0	26/05/ 2015	8.10 8.30 8.35		ROOM TEMPERATURE	2444	600 570 585	26.67 25.33 26.04	26.01
5I 5II 5III	5	27/05/ 2015	8.20 8.20 8.25			2436	555 550 600	24.67 24.44 26.67	25.26
10I 10II 10III	10	01/06/ 2015	8.30 7.95 8.10			2406	550 500 570	24.44 22.22 25.33	24.00
15I 15II 15III	15	02/06/ 2015	8.00 7.80 8.05			2356	470 470 500	20.89 20.80 22.22	21.30
20I 20II 20III	20	03/06/ 2015	8.05 7.80 7.95			2350	360 400 445	16.00 17.78 19.78	17.85
25I 25II 25III	25	04/06/ 2015	7.60 7.60 7.65			2258	380 340 400	16.89 15.11 17.78	16.59
30I 30II 30III	30	08/06/ 2015	7.10 7.40 7.65			2187	375 350 300	16.67 15.56 13.33	15.19
35I 35II 35III	35	09/06/ 2015	7.00 7.05 7.10			2089	288 340 295	12.80 15.11 13.11	13.67
40I 40II 40III	40	10/06/ 2015	6.90 6.90 7.00			2053	230 265 300	10.22 11.78 13.33	11.78
45I 45II 45III	45	11/06/ 2015	6.85 6.90 6.95			2044	230 250 240	10.22 11.11 10.67	10.67
50I 50II 50III	50	12/06/ 2015	6.90 6.80 6.95			2039	200 210 210	8.89 9.33 9.33	9.19

II-b: Compressive Strength at 200⁰C Temperature

Spec. Mark	EPS %	Date Cast	Wt. b/4 heating	Wt. After heating	Temp ⁰ C	Unit Wght Kg/m ³	Failure Load (kN)	Comp. Strength (N/mm ²)	Mean Strength
CI2 CII2 CIII2	0	26/05/ 2015	8.00 8.05 8.10	7.90 8.00 8.05	200 ⁰ C	2364	540 510 570	24.00 22.7 25.33	24.00
5I2 5II2 5III2	5	27/05/ 2015	8.30 8.10 8.40	8.40 8.10 8.40		2444	590 550 598	26.22 24.44 26.58	25.75
10I2 10II2 10III2	10	01/06/ 2015	8.45 8.25 8.45	8.20 8.00 8.30		2421	600 500 600	26.67 22.22 26.67	25.19
15I2 15II2 15III2	15	02/06/ 2015	8.00 8.05 8.10	8.00 8.05 8.10		2385	580 480 600	25.78 21.33 26.67	24.59
20I2 20II2 20III2	20	03/06/ 2015	7.60 8.05 8.30	8.00 7.65 8.20		2364	510 455 490	22.67 20.22 21.78	21.56
25I2 25II2 25III2	25	04/06/ 2015	7.60 7.70 7.75	7.70 7.65 7.75		2281	350 430 475	15.56 19.11 21.11	18.59
30I2 30II2 30III2	30	08/06/ 2015	7.40 7.40 7.45	7.35 7.40 7.45		2193	450 385 359	20.00 17.11 15.96	17.69
35I2 35II2 35III2	35	09/06/ 2015	7.30 7.30 7.50	7.20 7.25 7.30		2148	301 290 350	13.38 12.89 15.56	13.94
40I2 40II2 40III2	40	10/06/ 2015	7.50 7.00 7.30	7.35 6.95 7.20		2124	300 270 290	13.33 12.00 12.89	12.74
45I2 45II2 45III2	45	11/06/ 2015	7.25 7.05 7.35	7.10 6.90 7.30		2104	250 199 290	11.11 8.84 12.89	10.95
50I2 50II2 50III2	50	12/06/ 2015	7.15 6.85 7.50	7.00 6.70 7.30		2074	200 225 250	8.89 10.00 11.11	10.00

II-c: Compressive Strength at 400⁰C Temperature

Spec. Mark	EPS %	Date Cast	Wt. before heating	Wt. After heating	Temp ⁰ C	Unit Wt. Kg/m ³	Failure Load (kN)	Comp. Strength (N/mm ²)	Mean Strength
CI4 CII4 CIII4	0	26/05/ 2015	8.05 8.00 8.10	7.80 7.60 8.05	400 ⁰ C	2317	450 400 500	20.00 17.78 22.22	20.00
5I4 5II4 5III4	5	27/05/ 2015	7.95 8.10 8.10	8.25 8.20 8.25		2439	565 570 580	25.11 25.33 25.78	25.41
10I4 10II4 10III4	10	01/06/ 2015	8.00 8.10 8.20	8.25 8.05 8.15		2412	550 555 583	24.44 24.67 25.91	25.01
15I4 15II4 15III4	15	02/06/ 2015	8.10 8.25 8.50	8.00 7.95 8.05		2367	500 535 478	22.22 23.89 21.24	22.45
20I4 20II4 20III4	20	03/06/ 2015	8.10 7.70 7.65	8.05 7.90 7.90		2356	450 450 455	20.00 20.00 20.22	20.07
25I4 25II4 25III4	25	04/06/ 2015	7.75 7.45 7.80	7.80 7.50 7.80		2281	406 400 410	18.04 17.78 18.22	18.01
30I4 30II4 30III4	30	08/06/ 2015	7.30 7.10 7.50	7.35 7.40 7.45		2190	335 341 460	14.89 15.16 20.44	16.83
35I4 35II4 35III4	35	09/06/ 2015	7.10 7.00 7.20	7.05 7.05 7.20		2104	335 341 460	11.02 13.33 15.11	13.16
40I4 40II4 40III4	40	10/06/ 2015	7.10 6.70 6.90	6.95 6.90 7.00		2056	280 267 300	12.44 11.87 13.33	12.55
45I4 45II4 45III4	45	11/06/ 2015	7.00 7.00 7.15	6.95 6.90 6.90		2047	225 290 210	10.00 12.89 9.33	10.74
50I4 50II4 50III4	50	12/06/ 2015	7.00 7.05 7.15	6.80 6.90 6.95		2041	130 240 260	5.78 10.67 11.56	9.33

II-d: Compressive Strength at 600⁰C Temperature

Spec. Mark	EPS %	Date Cast	Wt. before heating	Wt. After heating	Temp ⁰ C	Unit Wt. Kg/m ³	Failure Load (kN)	Comp. Strength (N/mm ²)	Mean Strength
CI6 CII6 CIII6	0	26/05/ 2015	7.95 8.10 8.20	7.60 7.50 8.00	600 ⁰ C	2281	290 220 320	12.89 9.78 14.22	12.30
5I6 5II6 5III6	5	27/05/ 2015	7.90 7.95 8.00	7.50 7.80 7.65		2279	160 330 300	7.11 14.67 13.33	11.70
10I6 10II6 10III6	10	01/06/ 2015	7.90 7.90 8.00	7.80 7.00 7.60		2213	180 270 300	8.00 12.00 13.33	11.11
15I6 15II6 15III6	15	02/06/ 2015	8.30 8.10 8.30	7.40 7.40 7.60		2213	180 240 280	8.00 10.67 12.44	10.37
20I6 20II6 20III6	20	03/06/ 2015	8.30 7.65 8.25	7.35 7.40 7.50		2199	310 90 280	13.78 4.00 12.44	10.07
25I6 25II6 25III6	25	04/06/ 2015	7.55 7.90 8.05	7.00 7.30 7.50		2154	140 120 160	6.22 5.33 7.11	6.22
30I6 30II6 30III6	30	08/06/ 2015	7.25 7.25 7.40	6.70 6.70 7.00		2015	120 80 100	5.33 3.56 4.44	4.44
35I6 35II6 35III6	35	09/06/ 2015	7.10 7.00 7.20	6.45 6.40 7.00		1961	90 77 100	4.00 3.42 4.44	3.96
40I6 40II6 40III6	40	10/06/ 2015	6.15 6.95 7.00	6.00 6.35 6.90		1902	70 65 60	3.11 2.89 2.67	2.89
45I6 45II6 45III6	45	11/06/ 2015	6.80 6.85 6.90	6.40 6.30 6.40		1887	70 65 45	3.11 2.89 2.00	2.67
50I6 50II6 50III6	50	12/06/ 2015	6.80 7.00 6.90	6.40 6.00 6.50		1867	20 40 50	0.89 1.78 2.22	1.63

II-e: Compressive Strength at 800⁰C Temperature

Spec. Mark	EPS %	Date Cast	Wt. before heating	Wt. After heating	Tempt ⁰ C	Unit Wt. Kg/m ³	Failure Load (kN)	Comp. Strength (N/mm ²)	Mean Strength
CI8 CII8 CIII8	0	26/05/ 2015	8.05 7.90 8.10	7.50 7.60 7.55	800 ⁰ C	2237	260 210 270	11.56 9.33 12.00	10.96
5I8 5II8 5III8	5	27/05/ 2015	8.60 8.25 8.00	7.60 7.55 7.65		2252	270 190 230	12.00 8.44 10.22	10.22
10I8 10II8 10III8	10	01/06/ 2015	7.95 8.00 7.90	7.60 7.10 7.50		2193	160 140 190	7.11 6.22 8.44	7.26
15I8 15II8 15III8	15	02/06/ 2015	8.20 8.05 8.10	7.35 7.20 7.40		2169	160 80 200	7.11 3.56 8.89	6.52
20I8 20II8 20III8	20	03/06/ 2015	8.15 7.70 8.00	7.40 7.00 7.40		2154	100 100 150	4.44 4.44 6.67	5.19
25I8 25II8 25III8	25	04/06/ 2015	7.60 7.60 7.90	7.05 6.90 7.10		2080	90 90 120	4.00 4.00 5.33	4.44
30I8 30II8 30III8	30	08/06/ 2015	7.30 7.10 7.20	6.60 6.70 7.00		2006	80 30 100	3.56 1.33 4.44	3.11
35I8 35II8 35III8	35	09/06/ 2015	7.00 7.20 7.10	6.50 6.50 6.65		1941	60 40 80	2.67 1.78 3.56	2.67
40I8 40II8 40III8	40	10/06/ 2015	7.20 6.80 7.00	6.05 6.45 6.45		1873	57 40 60	2.53 1.78 2.67	2.33
45I8 45II8 45III8	45	11/06/ 2015	7.20 7.10 7.20	6.30 6.25 6.15		1846	30 20 30	1.33 0.89 1.33	1.19
50I8 50II8 50III8	50	12/06/ 2015	7.20 7.20 7.30	6.20 6.10 6.25		1831	10 20 20	0.44 0.89 0.89	0.74

APPENDIX III: Experimental Data Obtained for the Flexural Strength of Beams

(150×150×750) mm

III-a: Flexural Strength of Beams at Room Temperature (RT)

Spec. Mark	Wt. before heating(kg)	Wt. After Heating(kg)	Ultimate Failure Load (kN)	Temp^oC	Flexural Strength (N/mm²)	Mean flexural Strength
CI	41.20		10.00	ROOM TEMPERATURE	1.78	1.78
CII	41.10		9.50		1.69	
CIII	41.30		10.50		1.87	
5I	40.30		8.50		1.51	1.51
5II	40.30		9.00		1.60	
5III	40.30		8.00		1.42	
10I	40.70		7.00		1.24	1.24
10II	40.90		6.00		1.07	
10III	40.50		8.00		1.42	
15I	42.80		6.50		1.16	1.16
15II	42.90		7.00		1.24	
15III	42.70		6.00		1.07	
20I	39.80		6.00		1.07	1.07
20II	39.90		6.50		1.16	
20III	39.70		5.50		0.98	
25I	36.60		7.00		1.24	1.07
25II	36.50		6.00		1.07	
25III	36.70		6.00		0.89	
30I	35.10		5.50		0.98	0.98
30II	35.20		6.50		1.16	
30III	35.00		4.50		0.80	
35I	35.80		5.00		0.89	0.89
35II	35.60		5.00		0.89	
35III	36.00		5.00		0.89	
40I	36.40		4.50		0.80	0.80
40II	36.50		5.00		0.89	
40III	36.30		4.00		0.71	
45I	35.30		4.50		0.80	0.80
45II	35.50		4.50		0.80	
45III	35.10		4.50		0.80	
50I	34.10		4.50	0.80	0.80	
50II	34.00		5.50	0.98		
50III	34.20		3.50	0.62		

III-b: Flexural Strength of Beams at 200°C Temperature

Spec Mark	Wt. before heating(kg)	Wt. After Heating(kg)	Ultimate Failure Load (kN)	Temp ^o C	Flexural Strength (N/mm ²)	Mean flexural Strength
CI	41.20	40.90	8.00	200 ^o C	1.42	1.42
CII	41.10	40.80	9.00		1.60	
CIII	41.20	40.90	7.00		1.24	
5I	42.20	38.50	9.00		1.60	1.42
5II	42.15	38.50	6.00		1.07	
5III	42.10	40.90	9.00		1.60	
10I	41.20	40.90	8.00		1.42	1.42
10II	41.05	40.60	8.00		1.42	
10III	41.25	40.80	8.00		1.42	
15I	40.10	39.90	8.00		1.42	1.51
15II	40.00	39.90	8.50		1.51	
15III	40.05	39.80	9.00		1.60	
20I	39.60	38.80	9.00		1.60	1.60
20II	39.55	38.90	9.00		1.60	
20III	39.60	38.80	9.00		1.60	
25I	39.20	38.50	11.00		1.96	1.96
25II	39.05	38.45	12.00		2.13	
25III	39.15	38.45	10.00		1.78	
30I	36.00	35.70	9.50		1.69	1.69
30II	36.00	35.50	9.00		1.60	
30III	36.10	35.80	10.00		1.78	
35I	35.20	34.90	7.00		1.24	1.24
35II	35.10	34.90	8.00		1.42	
35III	35.20	34.80	6.00		1.07	
40I	34.40	34.00	7.00	1.24	1.07	
40II	34.40	34.00	5.00	0.89		
40III	34.40	33.90	6.00	1.07		
45I	34.55	34.05	5.00	0.89	0.89	
45II	34.50	34.00	5.00	0.89		
45III	34.50	34.10	5.00	0.89		
50I	34.70	34.10	6.00	1.07	0.89	
50II	34.50	34.05	5.00	0.89		
50III	34.90	34.00	4.00	0.71		

III-c: Flexural Strength of Beams at 400⁰C Temperature

Spec. Mark	Wt. before heating(kg)	Wt. After Heating(kg)	Ultimate Failure Load (kN)	Temp ⁰ C	Flexural Strength (N/mm ²)	Mean flexural Strength
CI	39.70	38.00	5.00	400 ⁰ C	0.89	0.89
CII	39.70	38.90	5.50		0.98	
CIII	39.60	38.00	4.50		0.80	
5I	40.10	38.90	5.00		0.89	0.89
5II	40.00	38.90	5.00		0.89	
5III	40.00	38.70	5.00		0.89	
10I	40.60	39.80	6.00		1.07	0.89
10II	40.50	39.70	4.00		0.71	
10III	40.60	39.80	5.00		0.89	
15I	41.20	38.20	6.00		1.07	0.98
15II	41.10	38.30	5.50		0.98	
15III	41.20	38.10	5.00		0.89	
20I	38.20	36.50	6.00		1.07	1.07
20II	38.20	36.40	6.00		1.07	
20III	38.00	36.50	6.00		1.07	
25I	38.90	37.00	7.50		1.33	1.33
25II	38.80	37.00	6.50		1.16	
25III	38.80	37.10	8.50		1.51	
30I	36.50	36.60	6.00		1.07	1.16
30II	36.50	36.60	6.50		1.16	
30III	36.50	36.50	7.00		1.24	
35I	37.30	35.40	5.50		0.98	0.98
35II	37.10	35.10	6.00		1.07	
35III	37.30	35.10	5.00		0.89	
40I	38.00	35.80	3.50		0.62	0.71
40II	38.10	35.80	4.50		0.80	
40III	38.05	35.70	4.00		0.71	
45I	35.05	33.15	4.00		0.71	0.71
45II	35.00	33.20	3.00		0.53	
45III	35.10	33.15	5.00		0.89	
50I	32.10	30.50	4.00	0.71	0.71	
50II	32.10	30.50	4.00	0.71		
50III	32.10	30.70	4.00	0.71		

III-d: Flexural Strength of Beams at 600⁰C Temperature

Spec. Mark	Wt. before heating(kg)	Wt. After Heating(kg)	Ultimate Failure Load (kN)	Temp ⁰ C	Flexural Strength (N/mm ²)	Mean flexural Strength
CI	41.90	39.90	2.50	600 ⁰ C	0.44	0.44
CII	41.90	39.80	3.00		0.53	
CIII	41.50	39.90	2.00		0.36	
5I	41.10	39.00	2.50		0.44	0.40
5II	41.10	39.10	2.25		0.40	
5III	41.20	39.05	2.00		0.36	
10I	39.20	36.80	2.50		0.44	0.44
10II	39.15	36.80	2.50		0.44	
10III	39.25	36.80	2.50		0.44	
15I	40.00	37.70	2.50		0.44	0.49
15II	40.05	37.80	2.75		0.49	
15III	40.10	37.80	3.00		0.53	
20I	38.40	36.30	3.00		0.53	0.53
20II	38.20	36.30	3.00		0.53	
20III	38.40	36.20	3.00		0.53	
25I	38.30	36.10	4.50		0.80	0.71
25II	38.30	36.30	4.00		0.71	
25III	38.50	36.30	3.50		0.62	
30I	36.80	35.90	3.50		0.62	0.62
30II	36.80	35.90	4.00		0.71	
30III	36.80	35.85	3.00		0.53	
35I	34.50	33.05	2.50		0.44	0.53
35II	34.30	33.10	3.50		0.62	
35III	34.50	33.20	3.00		0.53	
40I	32.20	30.20	2.00	0.36	0.36	
40II	32.10	30.20	2.00	0.36		
40III	32.05	30.20	2.00	0.36		
45I	33.40	31.30	2.25	0.40	0.36	
45II	33.45	31.25	2.25	0.40		
45III	33.40	31.30	1.50	0.27		
50I	34.60	32.40	2.50	0.44	0.36	
50II	34.60	32.30	2.00	0.36		
50III	34.50	32.50	1.50	0.27		

III-e: Flexural Strength of Beams at 800⁰C Temperature

Spec. Mark	Wt. before heating(kg)	Wt. After Heating(kg)	Ultimate Failure Load (kN)	Temp ⁰ C	Flexural Strength (N/mm ²)	Mean flexural Strength
CI	41.20	38.20	1.00	800 ⁰ C	0.18	0.18
CII	41.20	38.10	1.00		0.18	
CIII	41.30	38.10	1.00		0.18	
5I	38.80	35.70	1.00		0.18	0.18
5II	38.50	35.70	1.00		0.18	
5III	38.90	35.60	1.00		0.18	
10I	40.90	37.10	1.00		0.18	0.18
10II	40.90	37.10	1.00		0.18	
10III	40.80	37.05	1.00		0.18	
15I	40.20	36.40	1.25		0.22	0.22
15II	40.10	36.40	1.00		0.18	
15III	40.30	36.40	1.50		0.27	
20I	39.70	36.30	1.50		0.27	0.27
20II	39.60	36.10	1.25		0.22	
20III	40.00	36.20	1.75		0.31	
25I	38.50	34.70	2.00		0.36	0.36
25II	38.50	34.60	1.50		0.27	
25III	38.30	34.70	2.50		0.44	
30I	36.10	33.00	1.50		0.27	0.31
30II	36.00	33.00	1.50		0.27	
30III	36.10	33.10	2.25		0.40	
35I	36.70	33.55	1.00		0.18	0.18
35II	36.80	33.60	1.25		0.22	
35III	36.75	33.50	0.75		0.13	
40I	37.30	34.10	0.50		0.09	0.13
40II	37.30	34.10	1.25		0.22	
40III	37.30	34.00	0.50		0.09	
45I	36.40	33.10	0.50		0.09	0.09
45II	36.35	33.20	0.50		0.09	
45III	36.40	33.10	0.50		0.09	
50I	35.50	32.10	0.50	0.09	0.09	
50II	35.50	32.20	0.50	0.09		

50III	35.55	32.10	0.50		0.09	
--------------	--------------	--------------	-------------	--	-------------	--

APPENDIX IV: RELIABILITY CODE FOR REINFORCED CONCRETE BEAM IN BENDING

```

%%%%%%%%%%%%%%%%%%%%%%%%%%%%%%%%%%%%%%%%%%%%%%%%%%%%%%%%%%
%%%%%%%%%%%%%%%%%%%%%%%%%%%%%%%%%%%%%%%%%%%%%%%%%%%%%%%%%%
%
% THIS IS A MATLAB PROGRAM FORB THE STRUCTURAL RELIABILITY
%ANALYSIS OF SIMPLY SUPPORTED REINFORCED CONCRETE BEAM WITH
%EXPANDED POLYSTYRENE WASTE AS PARTIAL REPLACEMENT FOR COARSE
%AGGREGATE AT ELEVATED TEMPERATURES
%
%
% NAME: KUDIRAT OZIOHU YUSUF
% REG. NO: P13EGCV8042
%
% MAJOR SUPERVISOR: Dr. Y. D. AMARTEY
% MINOR SUPERVISOR: Dr. A. OCHOLI
%
%%%%%%%%%%%%%%%%%%%%%%%%%%%%%%%%%%%%%%%%%%%%%%%%%%%%%%%%%%
%%%%%%%%%%%%%%%%%%%%%%%%%%%%%%%%%%%%%%%%%%%%%%%%%%%%%%%%%%
%
% ROUTINE FOR DATA INPUT
%
%%%%%%%%%%%%%%%%%%%%%%%%%%%%%%%%%%%%%%%%%%%%%%%%%%%%%%%%%%
%%%%%%%%%%%%%%%%%%%%%%%%%%%%%%%%%%%%%%%%%%%%%%%%%%%%%%%%%%
disp(' ')
clc
[cov1,cov2,cov3,cov4,cov5]...
    = covariancel;
disp(' ')
const1 = input(' INPUT THE GRADIENT FOR THE FC PREDICTION MODEL
');
disp(' ')

```

```

cons2 = input(' INPUT THE INTERCEPT FOR THE FC PREDICTION
MODEL ');
disp(' ');
epsc = input(' INPUT PERCENTAGE EPS CONTENT ');
FCK = cons1*epsc + cons2;
disp(' ');
QK = input(' INPUT THE IMPOSED LOAD ON BEAM IN kN/m ');
disp(' ');
L = input(' INPUT THE LENGTH OF BEAM IN m ');
disp(' ');
B = input(' INPUT THE WIDTH OF THE BEAM IN mm ');
disp(' ');
ALPHA = input(' Input dead to live load ratio ');
disp(' ');
AS = input(' INPUT AREA OF REINFORCING STEEL IN mm^2 ');
disp(' ');
gammag = 1.35; gammaq = 1.5;
FY = input(' INPUT STEEL YIELD STRENGTH IN N/mm^2 ');
disp(' ');
D = input(' INPUT EFFECTIVE DEPTH OF THE CONCRETE IN mm
');
disp(' ');
%%%%%%%%%%%%%%%%%%%%%%%%%%%%%%%%%%%%%%%%%%%%%%%%%%%%%%%%%%%%%%%%%%%%%%%%
%%%%%%%%%%%%%%%%%%%%%%%%%%%%%%%%%%%%%%%%%%%%%%%%%%%%%%%%%%%%%%%%%%%%%%%%
%
% ROUTINE FOR THE FIRST ORDER RELIABILITY ANALYSIS
% THE RELIABILITY ANALYSIS IS EXECUTED THROUGH A SPECIAL
% MATLAB FUNCTION CALLED 'kudi_flexural.m'
%
%%%%%%%%%%%%%%%%%%%%%%%%%%%%%%%%%%%%%%%%%%%%%%%%%%%%%%%%%%%%%%%%%%%%%%%%
%%%%%%%%%%%%%%%%%%%%%%%%%%%%%%%%%%%%%%%%%%%%%%%%%%%%%%%%%%%%%%%%%%%%%%%%
beta_mode_1 =
kudi_flexural(QK,gammag,ALPHA,gammaq,L,AS,FY,D,FCK,B,...
cov1,cov2,cov3,cov4,cov5);
pf = probability_of_failure(beta_mode_1);
%%%%%%%%%%%%%%%%%%%%%%%%%%%%%%%%%%%%%%%%%%%%%%%%%%%%%%%%%%%%%%%%%%%%%%%%
%%%%%%%%%%%%%%%%%%%%%%%%%%%%%%%%%%%%%%%%%%%%%%%%%%%%%%%%%%%%%%%%%%%%%%%%
%
disp('The safety index')
disp(' ')
disp(beta_mode_1)
disp(' ')
disp('The probability of failure')
disp(' ')

```

```
disp(pf)
```

```
%  
%%%%%%%%%%%%%%%%%%%%%%%%%%%%%%%%%%%%%%%%%%%%%%%%%%%%%%%%%%%%%%%%%%%%%%%%  
%%%%%%%%%%%%%%%%%%%%%%%%%%%%%%%%%%%%%%%%%%%%%%%%%%%%%%%%%%%%%%%%%%%%%%%%  
%  
function [cov1,cov2,cov3,cov4,cov5]...  
    = covariance1  
%  
cov1 = 0.40;  
cov2 = 0.10;  
cov3 = 0.05;  
cov4 = 0.025;  
cov5 = 0.17;  
end
```

```

%
%%%%%%%%%%%%%%%%%%%%%%%%%%%%%%%%%%%%%%%%%%%%%%%%%%%%%%%%%%%%%%%%%%%%%%%%
%
%
%           TRANSFORMATION OF NON-NORMAL DISTRIBUTION
%           TO EQUIVALENT NORMAL DISTRIBUTION
%
%           RACKWITZ FIESSLER TRANSFORMATION
%
%%%%%%%%%%%%%%%%%%%%%%%%%%%%%%%%%%%%%%%%%%%%%%%%%%%%%%%%%%%%%%%%%%%%%%%%
%
function [DISTYPE1,DISTYPE2,DISTYPE3,DISTYPE4,DISTYPE5]...
        = distribution_model
%
%%%%%%%%%%%%%%%%%%%%%%%%%%%%%%%%%%%%%%%%%%%%%%%%%%%%%%%%%%%%%%%%%%%%%%%%
%
% INCLUDED DISTRIBUTION MODELS
%
% TYPE 1 FOR: Normal DISTRIBUTION
% TYPE 2 FOR: LOGNORMAL DISTRIBUTION
% TYPE 3 FOR: GUMBEL DISTRIBUTION
% TYPE 4 FOR: WEIBUL DISTRIBUTION
% TYPE 5 FOR: FRECHET DISTRIBUTION
%

```

```
%%%%%%%%%%%%%%%%%%%%%%%%%%%%%%%%%%%%%%%%%%%%%%%%%%%%%%%%%%
%%%%%%%%%%%%%%%%%%%%%%%%%%%%%%%%%%%%%%%%%%%%%%%%%%%%%%%%%%
```

```
%
DISTYPE1 = 3; DISTYPE2 = 1;
DISTYPE3 = 2; DISTYPE4 = 1;
DISTYPE5 = 2;
```

```
%
%%%%%%%%%%%%%%%%%%%%%%%%%%%%%%%%%%%%%%%%%%%%%%%%%%%%%%%%%%
%%%%%%%%%%%%%%%%%%%%%%%%%%%%%%%%%%%%%%%%%%%%%%%%%%%%%%%%%%
```

```
function beta_mode_1 = ...
```

```
kudi_flexural(QK,gammag,ALPHA,gammaq,L,AS,FY,D,FCK,B,...
              cov1,cov2,cov3,cov4,cov5)
```

```
%
[ DISTYPE1, DISTYPE2, DISTYPE3, DISTYPE4, DISTYPE5 ] =
distribution_model;
cv(1) = cov1; cv(2) = cov2; cv(3) = cov3; cv(4) = cov4;
cv(5) = cov5;
```

```
%
rfmu(1) = QK;      rfmfx1 = QK*cv(1);
rfmu(2) = AS;      rfmfx2 = AS*cv(2);
rfmu(3) = FY;      rfmfx3 = FY*cv(3);
rfmu(4) = D;       rfmfx4 = D*cv(4);
rfmu(5) = FCK;     rfmfx5 = FCK*cv(5);
```

```
%
if(DISTYPE1 == 1)
    %
    % DOING NORMAL
    %
    mean(1) = rfmfx1;
```

```

    sd(1) = rmf $x$ 1;
elseif(DISTYPE1 == 2)
    %
    % DOING LOGNORMAL TRANSFORMATION
    %
    [mean(1) sd(1)] = lognormal(rfm $\mu$ (1), rmf $x$ 1);
elseif(DISTYPE1 == 3)
    %
    % DOING GUMBEL TRANSFORMATION
    %
    [mean(1) sd(1)] = gumbel(rfm $\mu$ (1), rmf $x$ 1);
elseif(DISTYPE1 == 4)
    %
    % DOING WEIBULL TRANSFORMATION
    %
    [mean(1) sd(1)] = weibull(rfm $\mu$ (1), rmf $x$ 1);
elseif(DISTYPE1 == 5)
    %
    % DOING FRECHET TRANSFORMATION
    %
    [mean(1) sd(1)] = frechet(rfm $\mu$ (1), rmf $x$ 1);
end
if(DISTYPE2 == 1)
    %
    % DOING NORMAL
    %
    mean(2) = rfm $\mu$ (2);
    sd(2) = rmf $x$ 2;
elseif(DISTYPE2 == 2)
    %
    % DOING LOGNORMAL TRANSFORMATION
    %
    [mean(2) sd(2)] = lognormal(rfm $\mu$ (2), rmf $x$ 2);
elseif(DISTYPE2 == 3)
    %
    % DOING GUMBEL TRANSFORMATION
    %
    [mean(2) sd(2)] = gumbel(rfm $\mu$ (2), rmf $x$ 2);
elseif(DISTYPE2 == 4)
    %
    % DOING WEIBULL TRANSFORMATION
    %
    [mean(2) sd(2)] = weibull(rfm $\mu$ (2), rmf $x$ 2);
elseif(DISTYPE2 == 5)

```

```

%
% DOING FRECHET TRANSFORMATION
%
[mean(2) sd(2)] = frechet(rfmu(2),rmfx2);
end
if(DISTYPE3 == 1)
%
% DOING NORMAL
%
mean(3) = rfmu(3);
sd(3) = rmfx3;
elseif(DISTYPE3 == 2)
%
% DOING LOGNORMAL TRANSFORMATION
%
[mean(3) sd(3)] = lognormal(rfmu(3),rmfx3);
elseif(DISTYPE3 == 3)
%
% DOING GUMBEL TRANSFORMATION
%
[mean(3) sd(3)] = gumbel(rfmu(3),rmfx3);
elseif(DISTYPE3 == 4)
%
% DOING WEIBULL TRANSFORMATION
%
[mean(3) sd(3)] = weibull(rfmu(3),rmfx3);
elseif(DISTYPE3 == 5)
%
% DOING FRECHET TRANSFORMATION
%
[mean(3) sd(3)] = frechet(rfmu(3),rmfx3);
end
if(DISTYPE4 == 1)
%
% DOING NORMAL
%
mean(4) = rfmu(4);
sd(4) = rmfx4;
elseif(DISTYPE4 == 2)
%
% DOING LOGNORMAL TRANSFORMATION
%
[mean(4) sd(4)] = lognormal(rfmu(4),rmfx4);
elseif(DISTYPE4 == 3)

```

```

%
% DOING GUMBEL TRANSFORMATION
%
[mean(4) sd(4)] = gumbel(rfm(4), rfx4);
elseif(DISTYPE4 == 4)
%
% DOING WEIBULL TRANSFORMATION
%
[mean(4) sd(4)] = weibull(rfm(4), rfx4);
elseif(DISTYPE4 == 5)
%
% DOING FRECHET TRANSFORMATION
%
[mean(4) sd(4)] = frechet(rfm(4), rfx4);
end
%
if(DISTYPE5 == 1)
%
% DOING NORMAL
%
mean(5) = rfm(5);
sd(5) = rfx5;
elseif(DISTYPE5 == 2)
%
% DOING LOGNORMAL TRANSFORMATION
%
[mean(5) sd(5)] = lognormal(rfm(5), rfx5);
elseif(DISTYPE5 == 3)
%
% DOING GUMBEL TRANSFORMATION
%
[mean(5) sd(5)] = gumbel(rfm(5), rfx5);
elseif(DISTYPE5 == 4)
%
% DOING WEIBULL TRANSFORMATION[
%
[mean(5) sd(5)] = weibull(rfm(5), rfx5);
elseif(DISTYPE5 == 5)
%
% DOING FRECHET TRANSFORMATION
%
[mean(5) sd(5)] = frechet(rfm(5), rfx5);
end
%

```

```

%%%%%%%%%%%%%%%%%%%%%%%%%%%%%%%%%%%%%%%%%%%%%%%%%%%%%%%%%%%%%%%%%%%%%%%%
%%%%%%%%%%%%%%%%%%%%%%%%%%%%%%%%%%%%%%%%%%%%%%%%%%%%%%%%%%%%%%%%%%%%%%%%
%%%%%%%%%%%%%%%%%%%%%%%%%%%%%%%%%%%%%%%%%%%%%%%%%%%%%%%%%%%%%%%%%%%%%%%%
%%%%%%%%%%%%%%%%%%%%%%%%%%%%%%%%%%%%%%%%%%%%%%%%%%%%%%%%%%%%%%%%%%%%%%%%
%%%%%%%%%%%%%%%%%%%%%%%%%%%%%%%%%%%%%%%%%%%%%%%%%%%%%%%%%%%%%%%%%%%%%%%%
sev1 = sd(1); sev2 = sd(2); sev3 = sd(3); sev4 = sd(4);
sev5 = sd(5);
%%%%%%%%%%%%%%%%%%%%%%%%%%%%%%%%%%%%%%%%%%%%%%%%%%%%%%%%%%%%%%%%%%%%%%%%
%%%%%%%%%%%%%%%%%%%%%%%%%%%%%%%%%%%%%%%%%%%%%%%%%%%%%%%%%%%%%%%%%%%%%%%%
%%%%%%%%%%%%%%%%%%%%%%%%%%%%%%%%%%%%%%%%%%%%%%%%%%%%%%%%%%%%%%%%%%%%%%%%
%%%%%%%%%%%%%%%%%%%%%%%%%%%%%%%%%%%%%%%%%%%%%%%%%%%%%%%%%%%%%%%%%%%%%%%%
dev1 = mean(1); dev2 = mean(2); dev3 = mean(3); dev4 =
mean(4);
dev5 = mean(5);
%%%%%%%%%%%%%%%%%%%%%%%%%%%%%%%%%%%%%%%%%%%%%%%%%%%%%%%%%%%%%%%%%%%%%%%%
%%%%%%%%%%%%%%%%%%%%%%%%%%%%%%%%%%%%%%%%%%%%%%%%%%%%%%%%%%%%%%%%%%%%%%%%
%%%%%%%%%%%%%%%%%%%%%%%%%%%%%%%%%%%%%%%%%%%%%%%%%%%%%%%%%%%%%%%%%%%%%%%%
%%%%%%%%%%%%%%%%%%%%%%%%%%%%%%%%%%%%%%%%%%%%%%%%%%%%%%%%%%%%%%%%%%%%%%%%
ALL1      = 1;
ALL2      = 1;
ALL3      = 1;
ALL4      = 1;
ALL5      = 1;
if (ALL1 == 1)
part1 = -0.125*((gammag*ALPHA) + gammaq)*(L^2)*1000000.0;
else part1 = 0;
end
%
if(ALL2 == 1)
part2 = (dev3*dev4) - ((dev2*(dev3^2))/(B*dev5));
else
part2 = 0;
end
%
if(ALL3 == 1);
part3 = (dev2*dev4) - ((dev3*(dev2^2))/(B*dev5));
else
part3 = 0;
end
%
if(ALL4 == 1)
part4 = dev2*dev3;
else

```

```

        part4 = 0;
    end
    %
    if(ALL5 == 1)
part5 = 0.5*((dev3^2)*(dev2^2))/(B*(dev5^2));
    else
        part5 = 0;
    end
    %
    %%%%%%%%%%%
    %%%%%%%%%%%
    %%%%%%%%%%%
    %%%%%%%%%%%
deno = sqrt(((part1^2)*(sev1^2)) + ((part2^2)*(sev2^2)) + ...
            ((part3^2)*(sev3^2)) + ((part4^2)*(sev4^2)) + ...
            ((part5^2)*(sev5^2)));
    %%%%%%%%%%%
    %%%%%%%%%%%
    %%%%%%%%%%%
    %%%%%%%%%%%
nume = ((dev2*dev3*dev4) - (0.5*(dev2^2)*(dev3^2))/(B*dev5))
...
        - ((0.125*dev1*((gammag*ALPHA) +
gammag)*(L^2))*1000000.0);
    %%%%%%%%%%%
    %%%%%%%%%%%
    %%%%%%%%%%%
    %%%%%%%%%%%
    %
    if(deno <= 0)
        beta_mode_1 = 1000;
    else
beta_mode_1 = nume/deno;
    end
end

```

```

%%%%%%%%%%%%%%%%%%%%%%%%%%%%%%%%%%%%%%%%%%%%%%%%%%%%%%%%%%%%%%%%%%%%%%%%
%%%%%%%%%%%%%%%%%%%%%%%%%%%%%%%%%%%%%%%%%%%%%%%%%%%%%%%%%%%%%%%%%%%%%%%%
function [mean, std] = frechet(rfmu,rmfx)
%%%%%%%%%%%%%%%%%%%%%%%%%%%%%%%%%%%%%%%%%%%%%%%%%%%%%%%%%%%%%%%%%%%%%%%%
%%%%%%%%%%%%%%%%%%%%%%%%%%%%%%%%%%%%%%%%%%%%%%%%%%%%%%%%%%%%%%%%%%%%%%%%
%%%%%%%%%%%%%%%%%%%%%%%%%%%%%%%%%%%%%%%%%%%%%%%%%%%%%%%%%%%%%%%%%%%%%%%%
%%%%%%%%%%%%%%%%%%%%%%%%%%%%%%%%%%%%%%%%%%%%%%%%%%%%%%%%%%%%%%%%%%%%%%%%
%
%
%           SUBROUTINE FOR RACKWITZ FIESSLER TRANSFORMATION
%           TRANSFORMATION OF GUMBEL VARIABLES TO EQUIVALENT
%NORMAL VARIABLES
%

```

```

%
%
%%%%%%%%%%%%%%%%%%%%%%%%%%%%%%%%%%%%%%%%%%%%%%%%%%%%%%%%%%%%%%%%%%%%%%%%
%%%%%%%%%%%%%%%%%%%%%%%%%%%%%%%%%%%%%%%%%%%%%%%%%%%%%%%%%%%%%%%%%%%%%%%%
%
mean1 = rfm;
stan1 = rfm;
%
X = mean1;
%
AG = 2.33/((stan1/mean1)^(0.6770001));
cooler = 1-(1/AG);
cooler2 = gamma(cooler);
xx = X;
XU = mean1/cooler2;
cdf = exp(-(XU/xx)^AG);
pdf = cdf*(AG/XU)*(XU/xx)^(AG+1);
cdfx = cdf;
%
Z = invnorm(cdfx);
pdfz = exp((-Z^2)/2.0D0)/sqrt(6.2833185307D0);
std = pdfz/pdf;
mean = X-rmf*x*Z;
%
%%%%%%%%%%%%%%%%%%%%%%%%%%%%%%%%%%%%%%%%%%%%%%%%%%%%%%%%%%%%%%%%%%%%%%%%
%%%%%%%%%%%%%%%%%%%%%%%%%%%%%%%%%%%%%%%%%%%%%%%%%%%%%%%%%%%%%%%%%%%%%%%%

```

```

%
function xx = gamma(yy)
if(yy<=0)
    xx = 0;
elseif(yy > 0) && (yy < 1.0)
    xx = gmh(yy);
elseif(yy >= 1.0)
    xxx = yy - 1.0;
    xx = gmh(xxx);
end

```

```

%%%%%%%%%%%%%%%%%%%%%%%%%%%%%%%%%%%%%%%%%%%%%%%%%%%%%%%%%%%%%%%%%%%%%%%%
%%%%%%%%%%%%%%%%%%%%%%%%%%%%%%%%%%%%%%%%%%%%%%%%%%%%%%%%%%%%%%%%%%%%%%%%
function xx = gmh(y)
%
xx = 1.0 + y*(-0.577191652D0 + ...
    y*(0.9878205891D0 + y*(-0.897056937D0 +...
    y*(0.918206857D0 + y*(0.765704078D0 +...
    y*(0.482199394D0 + y*(-0.193527818D0 +...
    y*(0.035868343D0))))));

```

```
%%%%%%%%%%%%%%%%%%%%%%%%%%%%%%%%%%%%%%%%%%%%%%%%%%%%%%%%%%%%%%%%%%%%%%%%
%%%%%%%%%%%%%%%%%%%%%%%%%%%%%%%%%%%%%%%%%%%%%%%%%%%%%%%%%%%%%%%%%%%%%%%%
function [mean, std] = gumbel(rfmu,rmfx)
%%%%%%%%%%%%%%%%%%%%%%%%%%%%%%%%%%%%%%%%%%%%%%%%%%%%%%%%%%%%%%%%%%%%%%%%
%%%%%%%%%%%%%%%%%%%%%%%%%%%%%%%%%%%%%%%%%%%%%%%%%%%%%%%%%%%%%%%%%%%%%%%%
%
%                               SUBROUTINE THIRTY FIVE
%
%%%%%%%%%%%%%%%%%%%%%%%%%%%%%%%%%%%%%%%%%%%%%%%%%%%%%%%%%%%%%%%%%%%%%%%%
%%%%%%%%%%%%%%%%%%%%%%%%%%%%%%%%%%%%%%%%%%%%%%%%%%%%%%%%%%%%%%%%%%%%%%%%
```



```

%%%%%%%%%%%%%%%%%%%%%%%%%%%%%%%%%%%%%%%%%%%%%%%%%%%%%%%%%%%%%%%%%%%%%%%% SUBROUTINE THIRTRY SEVEN
%%%%%%%%%%%%%%%%%%%%%%%%%%%%%%%%%%%%%%%%%%%%%%%%%%%%%%%%%%%%%%%%%%%%%%%%
%%%%%%%%%%%%%%%%%%%%%%%%%%%%%%%%%%%%%%%%%%%%%%%%%%%%%%%%%%%%%%%%%%%%%%%%
%%%%%%%%%%%%%%%%%%%%%%%%%%%%%%%%%%%%%%%%%%%%%%%%%%%%%%%%%%%%%%%%%%%%%%%%
%
%
%           SUBROUTINE TO EVALUATE INVERSE NORMA CUMMULATIVE
%
%           DISTRIBUTION FUNCTION (CDF)
%
%
%
% Uses Hasting Polynomial 26.2.23 of 'Handbook of Mathematical
% Functions 1972. M. Abramcwitz and T. M. Stegun Ang 55
% National Bureau of Standards US Department of Commerce
%
%
%%%%%%%%%%%%%%%%%%%%%%%%%%%%%%%%%%%%%%%%%%%%%%%%%%%%%%%%%%%%%%%%%%%%%%%%
%%%%%%%%%%%%%%%%%%%%%%%%%%%%%%%%%%%%%%%%%%%%%%%%%%%%%%%%%%%%%%%%%%%%%%%%
if(cdfx<0.5)
    T = sqrt(log(1.0/cdfx^2));
else
    T = sqrt(log(1.0/(1.0-cdfx)^2));
end
Y = (0.001308*T+0.189269)*(T+1.432788)*T+1.0;
Y = Y-((0.010328*T+0.802853)*T+2.515517)/Y;
if(cdfx<0.5)
    Z = -Y;
else
    Z = Y;
end
end
%
%%%%%%%%%%%%%%%%%%%%%%%%%%%%%%%%%%%%%%%%%%%%%%%%%%%%%%%%%%%%%%%%%%%%%%%%
%%%%%%%%%%%%%%%%%%%%%%%%%%%%%%%%%%%%%%%%%%%%%%%%%%%%%%%%%%%%%%%%%%%%%%%%

%%%%%%%%%%%%%%%%%%%%%%%%%%%%%%%%%%%%%%%%%%%%%%%%%%%%%%%%%%%%%%%%%%%%%%%%
%%%%%%%%%%%%%%%%%%%%%%%%%%%%%%%%%%%%%%%%%%%%%%%%%%%%%%%%%%%%%%%%%%%%%%%%
function[mean,std] = lognormal(rfm,rmf)

```

```

%%%%%%%%%%%%%%%%%%%%%%%%%%%%%%%%%%%%%%%%%%%%%%%%%%%%%%%%%%%%%%%%%%%%%%%%
%
% SUBROUTINE THIRTY EIGHT
%
%
%
%
%
%
% SUBROUTINE FOR RACKWITZ FIESSLER TRANSFORMATION OF LOGNORMAL
%   DISTRIBUTION TO EQUIVALENT NORMAL DISTRIBUTION
%
%
%%%%%%%%%%%%%%%%%%%%%%%%%%%%%%%%%%%%%%%%%%%%%%%%%%%%%%%%%%%%%%%%%%%%%%%%
%
x0 = rfmu-rmfx;
x = rfmu;
om = sqrt(1.0+(rmfx/(rfmu-x0))^2);
std = (x-x0)*sqrt(2.0*log(om));
mean = x+(x-x0)*log((rfmu-x0)/(x-x0)/om);
end
%
%%%%%%%%%%%%%%%%%%%%%%%%%%%%%%%%%%%%%%%%%%%%%%%%%%%%%%%%%%%%%%%%%%%%%%%%
%

```

```

%%%%%%%%%%%%%%%%%%%%%%%%%%%%%%%%%%%%%%%%%%%%%%%%%%%%%%%%%%%%%%%%%%%%%%%%
%

```

```

function [mean, std] = weibull(rfmu,rmfx)
%%%%%%%%%%%%%%%%%%%%%%%%%%%%%%%%%%%%%%%%%%%%%%%%%%%%%%%%%%%%%%%%%%%%%%%%
%%%%%%%%%%%%%%%%%%%%%%%%%%%%%%%%%%%%%%%%%%%%%%%%%%%%%%%%%%%%%%%%%%%%%%%%
%%%%%%%%%%%%%%%%%%%%%%%%%%%%%%%%%%%%%%%%%%%%%%%%%%%%%%%%%%%%%%%%%%%%%%%%
%
%
%           SUBROUTINE FOR RACKWITZ FIESSLER TRANSFORMATION
%
%           TRANSFORMATION OF GUMBEL VARIABLES TO EQUIVALENT
NORMAL          %
%
%                               VARIABLES
%
%
%
%%%%%%%%%%%%%%%%%%%%%%%%%%%%%%%%%%%%%%%%%%%%%%%%%%%%%%%%%%%%%%%%%%%%%%%%
%%%%%%%%%%%%%%%%%%%%%%%%%%%%%%%%%%%%%%%%%%%%%%%%%%%%%%%%%%%%%%%%%%%%%%%%
%
mean1 = rfmu;
stan1 = rmfx;
%
A = ((stan1/mean1)^2)+1;
X = mean1;
XX = X;
%
AG = ((A-1)^(-1/1.835))-0.5;
%
DEL = -0.5;
AG = AG+DEL;
fool1 = 1+(1/AG);
fool11 = gamma(fool1);
ET = mean1/fool11;
TMP = exp(-(XX/ET)^AG);
cdf = 1-TMP;
pdf = (AG/ET)*((XX/ET)^(AG-1))*TMP;
cdfx = cdf;
%
Z      = invnorm(cdfx);
pdfz = exp((-Z^2)/2.0D0)/sqrt(6.2833185307D0);
std = pdfz/pdf;
mean = X-rmfx*Z;
%
%%%%%%%%%%%%%%%%%%%%%%%%%%%%%%%%%%%%%%%%%%%%%%%%%%%%%%%%%%%%%%%%%%%%%%%%
%%%%%%%%%%%%%%%%%%%%%%%%%%%%%%%%%%%%%%%%%%%%%%%%%%%%%%%%%%%%%%%%%%%%%%%%

```

```

function pf = probability_of_failure(beta)
%
%%%%%%%%%%%%%%%%%%%%%%%%%%%%%%%%%%%%%%%%%%%%%%%%%%%%%%%%%%%%%%%%%%%%%%%%
%
%   REFERENCE: Melchers R. E. Structural Reliability analysis
%               and prediction. 1999. Ellis Horwood Limited
%               John Wley and Sons. pp 372 to 374
%
%   COMPLEMENTARY STANDARD NORMAL ROUTINE
%
%   SUBROUTINE FOUTY ONE
%
if(beta <= 0)
    pf = 1.0;
elseif(beta > 0) && (beta <= 0.01)
    pf = 0.4960;
elseif(beta > 0.01) && (beta <= 0.02)
    pf = 0.4920;
elseif(beta > 0.02) && (beta <= 0.03)
    pf = 0.4880;
elseif(beta > 0.03) && (beta <= 0.04)
    pf = 0.4841;
elseif(beta > 0.04) && (beta <= 0.05)
    pf = 0.4801;
elseif(beta > 0.05) && (beta <= 0.06)
    pf = 0.4761;
elseif(beta > 0.06) && (beta <= 0.07)
    pf = 0.4721;
elseif(beta > 0.07) && (beta <= 0.08)
    pf = 0.4681;
elseif(beta > 0.08) && (beta <= 0.09)
    pf = 0.4642;
elseif(beta > 0.09) && (beta <= 0.10)
    pf = 0.4602;
elseif(beta > 0.10) && (beta <= 0.11)
    pf = 0.4562;
elseif(beta > 0.11) && (beta <= 0.12)
    pf = 0.4522;
elseif(beta > 0.12) && (beta <= 0.13)
    pf = 0.4483;
elseif(beta > 0.13) && (beta <= 0.14)
    pf = 0.4443;
elseif(beta > 0.14) && (beta <= 0.15)
    pf = 0.4404;

```

```
elseif(beta > 0.15) && (beta <= 0.16)
    pf = 0.4364;
elseif(beta > 0.16) && (beta <= 0.17)
    pf = 0.4325;
elseif(beta > 0.17) && (beta <= 0.18)
    pf = 0.4286;
elseif(beta > 0.18) && (beta <= 0.19)
    pf = 0.4247;
elseif(beta > 0.19) && (beta <= 0.20)
    pf = 0.4207;
elseif(beta > 0.20) && (beta <= 0.21)
    pf = 0.4168;
elseif(beta > 0.21) && (beta <= 0.22)
    pf = 0.4129;
elseif(beta > 0.22) && (beta <= 0.23)
    pf = 0.4091;
elseif(beta > 0.23) && (beta <= 0.24)
    pf = 0.4052;
elseif(beta > 0.24) && (beta <= 0.25)
    pf = 0.4013;
elseif(beta > 0.25) && (beta <= 0.26)
    pf = 0.3974;
elseif(beta > 0.26) && (beta <= 0.27)
    pf = 0.3936;
elseif(beta > 0.27) && (beta <= 0.28)
    pf = 0.3897;
elseif(beta > 0.28) && (beta <= 0.29)
    pf = 0.3859;
elseif(beta > 0.29) && (beta <= 0.30)
    pf = 0.3821;
elseif(beta > 0.30) && (beta <= 0.31)
    pf = 0.3783;
elseif(beta > 0.31) && (beta <= 0.32)
    pf = 0.3745;
elseif(beta > 0.32) && (beta <= 0.33)
    pf = 0.3707;
elseif(beta > 0.33) && (beta <= 0.34)
    pf = 0.3669;
elseif(beta > 0.34) && (beta <= 0.35)
    pf = 0.3632;
elseif(beta > 0.35) && (beta <= 0.36)
    pf = 0.3594;
elseif(beta > 0.36) && (beta <= 0.37)
    pf = 0.3557;
```

```
elseif(beta > 0.37) && (beta <= 0.38)
    pf = 0.3520;
elseif(beta > 0.38) && (beta <= 0.39)
    pf = 0.3483;
elseif(beta > 0.39) && (beta <= 0.40)
    pf = 0.3446;
elseif(beta > 0.40) && (beta <= 0.41)
    pf = 0.3409;
elseif(beta > 0.41) && (beta <= 0.42)
    pf = 0.3372;
elseif(beta > 0.42) && (beta <= 0.43)
    pf = 0.3338;
elseif(beta > 0.43) && (beta <= 0.44)
    pf = 0.3300;
elseif(beta > 0.44) && (beta <= 0.45)
    pf = 0.3264;
elseif(beta > 0.45) && (beta <= 0.46)
    pf = 0.3228;
elseif(beta > 0.46) && (beta <= 0.47)
    pf = 0.3192;
elseif(beta > 0.47) && (beta <= 0.48)
    pf = 0.3156;
elseif(beta > 0.48) && (beta <= 0.49)
    pf = 0.3121;
elseif(beta > 0.49) && (beta <= 0.50)
    pf = 0.3085;
elseif(beta > 0.50) && (beta <= 0.51)
    pf = 0.3050;
elseif(beta > 0.51) && (beta <= 0.52)
    pf = 0.3015;
elseif(beta > 0.52) && (beta <= 0.53)
    pf = 0.2981;
elseif(beta > 0.53) && (beta <= 0.54)
    pf = 0.2948;
elseif(beta > 0.54) && (beta <= 0.55)
    pf = 0.2912;
elseif(beta > 0.55) && (beta <= 0.56)
    pf = 0.2877;
elseif(beta > 0.56) && (beta <= 0.57)
    pf = 0.2843;
elseif(beta > 0.57) && (beta <= 0.58)
    pf = 0.2810;
elseif(beta > 0.58) && (beta <= 0.59)
    pf = 0.2776;
```

```
elseif(beta > 0.59) && (beta <= 0.60)
    pf = 0.2743;
elseif(beta > 0.60) && (beta <= 0.61)
    pf = 0.2709;
elseif(beta > 0.61) && (beta <= 0.62)
    pf = 0.2676;
elseif(beta > 0.62) && (beta <= 0.63)
    pf = 0.2644;
elseif(beta > 0.63) && (beta <= 0.64)
    pf = 0.2611;
elseif(beta > 0.64) && (beta <= 0.65)
    pf = 0.2579;
elseif(beta > 0.65) && (beta <= 0.66)
    pf = 0.2546;
elseif(beta > 0.66) && (beta <= 0.67)
    pf = 0.2514;
elseif(beta > 0.67) && (beta <= 0.68)
    pf = 0.2483;
elseif(beta > 0.68) && (beta <= 0.69)
    pf = 0.2451;
elseif(beta > 0.69) && (beta <= 0.70)
    pf = 0.2420;
elseif(beta > 0.70) && (beta <= 0.71)
    pf = 0.2389;
elseif(beta > 0.71) && (beta <= 0.72)
    pf = 0.2358;
elseif(beta > 0.72) && (beta <= 0.73)
    pf = 0.2327;
elseif(beta > 0.73) && (beta <= 0.74)
    pf = 0.2297;
elseif(beta > 0.74) && (beta <= 0.75)
    pf = 0.2266;
elseif(beta > 0.75) && (beta <= 0.76)
    pf = 0.2236;
elseif(beta > 0.76) && (beta <= 0.77)
    pf = 0.2207;
elseif(beta > 0.77) && (beta <= 0.78)
    pf = 0.2177;
elseif(beta > 0.78) && (beta <= 0.79)
    pf = 0.2148;
elseif(beta > 0.79) && (beta <= 0.80)
    pf = 0.2119;
elseif(beta > 0.80) && (beta <= 0.81)
    pf = 0.2090;
```

```
elseif(beta > 0.81) && (beta <= 0.82)
    pf = 0.2061;
elseif(beta > 0.82) && (beta <= 0.83)
    pf = 0.2033;
elseif(beta > 0.83) && (beta <= 0.84)
    pf = 0.2005;
elseif(beta > 0.84) && (beta <= 0.85)
    pf = 0.1977;
elseif(beta > 0.85) && (beta <= 0.86)
    pf = 0.1949;
elseif(beta > 0.86) && (beta <= 0.87)
    pf = 0.1922;
elseif(beta > 0.87) && (beta <= 0.88)
    pf = 0.1894;
elseif(beta > 0.88) && (beta <= 0.89)
    pf = 0.1867;
elseif(beta > 0.89) && (beta <= 0.90)
    pf = 0.1841;
elseif(beta > 0.90) && (beta <= 0.91)
    pf = 0.1814;
elseif(beta > 0.91) && (beta <= 0.92)
    pf = 0.1788;
elseif(beta > 0.92) && (beta <= 0.93)
    pf = 0.1762;
elseif(beta > 0.93) && (beta <= 0.94)
    pf = 0.1736;
elseif(beta > 0.94) && (beta <= 0.95)
    pf = 0.1711;
elseif(beta > 0.95) && (beta <= 0.96)
    pf = 0.1685;
elseif(beta > 0.96) && (beta <= 0.97)
    pf = 0.1660;
elseif(beta > 0.97) && (beta <= 0.98)
    pf = 0.1635;
elseif(beta > 0.98) && (beta <= 0.99)
    pf = 0.1611;
elseif(beta > 0.99) && (beta <= 1.00)
    pf = 0.1587;
elseif(beta > 1.00) && (beta <= 1.01)
    pf = 0.1563;
elseif(beta > 1.01) && (beta <= 1.02)
    pf = 0.1539;
elseif(beta > 1.02) && (beta <= 1.03)
    pf = 0.1515;
```

```
elseif(beta > 1.03) && (beta <= 1.04)
    pf = 0.1492;
elseif(beta > 1.04) && (beta <= 1.05)
    pf = 0.1469;
elseif(beta > 1.05) && (beta <= 1.06)
    pf = 0.1446;
elseif(beta > 1.06) && (beta <= 1.07)
    pf = 0.1423;
elseif(beta > 1.07) && (beta <= 1.08)
    pf = 0.1401;
elseif(beta > 1.08) && (beta <= 1.09)
    pf = 0.1379;
elseif(beta > 1.09) && (beta <= 1.10)
    pf = 0.1357;
elseif(beta > 1.10) && (beta <= 1.11)
    pf = 0.1335;
elseif(beta > 1.11) && (beta <= 1.12)
    pf = 0.1314;
elseif(beta > 1.12) && (beta <= 1.13)
    pf = 0.1292;
elseif(beta > 1.13) && (beta <= 1.14)
    pf = 0.1271;
elseif(beta > 1.14) && (beta <= 1.15)
    pf = 0.1251;
elseif(beta > 1.15) && (beta <= 1.16)
    pf = 0.1230;
elseif(beta > 1.16) && (beta <= 1.17)
    pf = 0.1210;
elseif(beta > 1.17) && (beta <= 1.18)
    pf = 0.1190;
elseif(beta > 1.18) && (beta <= 1.19)
    pf = 0.1170;
elseif(beta > 1.19) && (beta <= 1.20)
    pf = 0.1151;
elseif(beta > 1.20) && (beta <= 1.21)
    pf = 0.1131;
elseif(beta > 1.21) && (beta <= 1.22)
    pf = 0.1112;
elseif(beta > 1.22) && (beta <= 1.23)
    pf = 0.1094;
elseif(beta > 1.23) && (beta <= 1.24)
    pf = 0.1075;
elseif(beta > 1.24) && (beta <= 1.25)
    pf = 0.1057;
```

```
elseif(beta > 1.25) && (beta <= 1.26)
    pf = 0.1038;
elseif(beta > 1.26) && (beta <= 1.27)
    pf = 0.1020;
elseif(beta > 1.27) && (beta <= 1.28)
    pf = 0.1003;
elseif(beta > 1.28) && (beta <= 1.29)
    pf = 0.9853e-01;
elseif(beta > 1.29) && (beta <= 1.30)
    pf = 0.968e-01;
elseif(beta > 1.30) && (beta <= 1.31)
    pf = 0.9510e-01;
elseif(beta > 1.31) && (beta <= 1.32)
    pf = 0.9342e-01;
elseif(beta > 1.32) && (beta <= 1.33)
    pf = 0.9176e-01;
elseif(beta > 1.33) && (beta <= 1.34)
    pf = 0.9013e-01;
elseif(beta > 1.34) && (beta <= 1.35)
    pf = 0.8851e-01;
elseif(beta > 1.35) && (beta <= 1.36)
    pf = 0.8692e-01;
elseif(beta > 1.36) && (beta <= 1.37)
    pf = 0.8535e-01;
elseif(beta > 1.37) && (beta <= 1.38)
    pf = 0.8380e-01;
elseif(beta > 1.38) && (beta <= 1.39)
    pf = 0.8227e-01;
elseif(beta > 1.39) && (beta <= 1.40)
    pf = 0.8076e-01;
elseif(beta > 1.40) && (beta <= 1.41)
    pf = 0.7927e-01;
elseif(beta > 1.41) && (beta <= 1.42)
    pf = 0.7781e-01;
elseif(beta > 1.42) && (beta <= 1.43)
    pf = 0.7636e-01;
elseif(beta > 1.43) && (beta <= 1.44)
    pf = 0.7494e-01;
elseif(beta > 1.44) && (beta <= 1.45)
    pf = 0.7353e-01;
elseif(beta > 1.45) && (beta <= 1.46)
    pf = 0.7216e-01;
elseif(beta > 1.46) && (beta <= 1.47)
    pf = 0.7078e-01;
```

```
elseif(beta > 1.47) && (beta <= 1.48)
    pf = 0.6944e-01;
elseif(beta > 1.48) && (beta <= 1.49)
    pf = 0.6811e-01;
elseif(beta > 1.49) && (beta <= 1.50)
    pf = 0.6681e-01;
elseif(beta > 1.50) && (beta <= 1.51)
    pf = 0.6552e-01;
elseif(beta > 1.51) && (beta <= 1.52)
    pf = 0.6426e-01;
elseif(beta > 1.52) && (beta <= 1.53)
    pf = 0.6301e-01;
elseif(beta > 1.53) && (beta <= 1.54)
    pf = 0.6178e-01;
elseif(beta > 1.54) && (beta <= 1.55)
    pf = 0.6057e-01;
elseif(beta > 1.55) && (beta <= 1.56)
    pf = 0.5938e-01;
elseif(beta > 1.56) && (beta <= 1.57)
    pf = 0.5821e-01;
elseif(beta > 1.57) && (beta <= 1.58)
    pf = 0.5706e-01;
elseif(beta > 1.58) && (beta <= 1.59)
    pf = 0.5592e-01;
elseif(beta > 1.59) && (beta <= 1.60)
    pf = 0.5480e-01;
elseif(beta > 1.60) && (beta <= 1.61)
    pf = 0.5370e-01;
elseif(beta > 1.61) && (beta <= 1.62)
    pf = 0.5282e-01;
elseif(beta > 1.62) && (beta <= 1.63)
    pf = 0.5155e-01;
elseif(beta > 1.63) && (beta <= 1.64)
    pf = 0.5050e-01;
elseif(beta > 1.64) && (beta <= 1.65)
    pf = 0.4947e-01;
elseif(beta > 1.65) && (beta <= 1.66)
    pf = 0.4846e-01;
elseif(beta > 1.66) && (beta <= 1.67)
    pf = 0.4746e-01;
elseif(beta > 1.67) && (beta <= 1.68)
    pf = 0.4648e-01;
elseif(beta > 1.68) && (beta <= 1.69)
    pf = 0.4552e-01;
```

```
elseif(beta > 1.69) && (beta <= 1.70)
    pf = 0.4457e-01;
elseif(beta > 1.70) && (beta <= 1.71)
    pf = 0.4363e-01;
elseif(beta > 1.71) && (beta <= 1.72)
    pf = 0.4272e-01;
elseif(beta > 1.72) && (beta <= 1.73)
    pf = 0.4182e-01;
elseif(beta > 1.73) && (beta <= 1.74)
    pf = 0.4093e-01;
elseif(beta > 1.74) && (beta <= 1.75)
    pf = 0.4006e-01;
elseif(beta > 1.75) && (beta <= 1.76)
    pf = 0.3921e-01;
elseif(beta > 1.76) && (beta <= 1.77)
    pf = 0.3836e-01;
elseif(beta > 1.77) && (beta <= 1.78)
    pf = 0.3754e-01;
elseif(beta > 1.78) && (beta <= 1.79)
    pf = 0.3673e-01;
elseif(beta > 1.79) && (beta <= 1.80)
    pf = 0.3593e-01;
elseif(beta > 1.80) && (beta <= 1.81)
    pf = 0.3515e-01;
elseif(beta > 1.81) && (beta <= 1.82)
    pf = 0.3438e-01;
elseif(beta > 1.82) && (beta <= 1.83)
    pf = 0.3363e-01;
elseif(beta > 1.83) && (beta <= 1.84)
    pf = 0.3289e-01;
elseif(beta > 1.84) && (beta <= 1.85)
    pf = 0.3216e-01;
elseif(beta > 1.85) && (beta <= 1.86)
    pf = 0.3144e-01;
elseif(beta > 1.86) && (beta <= 1.87)
    pf = 0.3074e-01;
elseif(beta > 1.87) && (beta <= 1.88)
    pf = 0.3005e-01;
elseif(beta > 1.88) && (beta <= 1.89)
    pf = 0.2938e-01;
elseif(beta > 1.89) && (beta <= 1.90)
    pf = 0.2872e-01;
elseif(beta > 1.90) && (beta <= 1.91)
    pf = 0.2807e-01;
```

```
elseif(beta > 1.91) && (beta <= 1.92)
    pf = 0.2743e-01;
elseif(beta > 1.92) && (beta <= 1.93)
    pf = 0.2680e-01;
elseif(beta > 1.93) && (beta <= 1.94)
    pf = 0.2619e-01;
elseif(beta > 1.94) && (beta <= 1.95)
    pf = 0.2553e-01;
elseif(beta > 1.95) && (beta <= 1.96)
    pf = 0.2500e-01;
elseif(beta > 1.96) && (beta <= 1.97)
    pf = 0.2442e-01;
elseif(beta > 1.97) && (beta <= 1.98)
    pf = 0.2385e-01;
elseif(beta > 1.98) && (beta <= 1.99)
    pf = 0.2330e-01;
elseif(beta > 1.99) && (beta <= 2.00)
    pf = 0.2275e-01;
elseif(beta > 2.00) && (beta <= 2.01)
    pf = 0.2222e-01;
elseif(beta > 2.01) && (beta <= 2.02)
    pf = 0.2169e-01;
elseif(beta > 2.02) && (beta <= 2.03)
    pf = 0.2118e-01;
elseif(beta > 2.03) && (beta <= 2.04)
    pf = 0.2068e-01;
elseif(beta > 2.04) && (beta <= 2.05)
    pf = 0.2018e-01;
elseif(beta > 2.05) && (beta <= 2.06)
    pf = 0.1970e-01;
elseif(beta > 2.06) && (beta <= 2.07)
    pf = 0.1923e-01;
elseif(beta > 2.07) && (beta <= 2.08)
    pf = 0.1876e-01;
elseif(beta > 2.08) && (beta <= 2.09)
    pf = 0.1831e-01;
elseif(beta > 2.09) && (beta <= 2.10)
    pf = 0.1788e-01;
elseif(beta > 2.10) && (beta <= 2.11)
    pf = 0.1743e-01;
elseif(beta > 2.11) && (beta <= 2.12)
    pf = 0.1700e-01;
elseif(beta > 2.12) && (beta <= 2.13)
    pf = 0.1659e-01;
```

```
elseif(beta > 2.13) && (beta <= 2.14)
    pf = 0.1618e-01;
elseif(beta > 2.14) && (beta <= 2.15)
    pf = 0.1578e-01;
elseif(beta > 2.15) && (beta <= 2.16)
    pf = 0.1539e-01;
elseif(beta > 2.16) && (beta <= 2.17)
    pf = 0.1500e-01;
elseif(beta > 2.17) && (beta <= 2.18)
    pf = 0.1483e-01;
elseif(beta > 2.18) && (beta <= 2.19)
    pf = 0.1426e-01;
elseif(beta > 2.19) && (beta <= 2.20)
    pf = 0.1390e-01;
elseif(beta > 2.20) && (beta <= 2.21)
    pf = 0.1355e-01;
elseif(beta > 2.21) && (beta <= 2.22)
    pf = 0.1321e-01;
elseif(beta > 2.22) && (beta <= 2.23)
    pf = 0.1287e-01;
elseif(beta > 2.23) && (beta <= 2.24)
    pf = 0.1253e-01;
elseif(beta > 2.24) && (beta <= 2.25)
    pf = 0.1222e-01;
elseif(beta > 2.25) && (beta <= 2.26)
    pf = 0.11191e-01;
elseif(beta > 2.26) && (beta <= 2.27)
    pf = 0.1160e-01;
elseif(beta > 2.27) && (beta <= 2.28)
    pf = 0.1130e-01;
elseif(beta > 2.28) && (beta <= 2.29)
    pf = 0.1101e-01;
elseif(beta > 2.29) && (beta <= 2.30)
    pf = 0.1072e-01;
elseif(beta > 2.30) && (beta <= 2.31)
    pf = 0.1044e-01;
elseif(beta > 2.31) && (beta <= 2.32)
    pf = 0.1017e-01;
elseif(beta > 2.32) && (beta <= 2.33)
    pf = 0.9903e-02;
elseif(beta > 2.33) && (beta <= 2.34)
    pf = 0.9642e-02;
elseif(beta > 2.34) && (beta <= 2.35)
    pf = 0.9387e-02;
```

```
elseif(beta > 2.35) && (beta <= 2.36)
    pf = 0.9138e-02;
elseif(beta > 2.36) && (beta <= 2.37)
    pf = 0.8894e-02;
elseif(beta > 2.37) && (beta <= 2.38)
    pf = 0.8657e-02;
elseif(beta > 2.38) && (beta <= 2.39)
    pf = 0.8424e-02;
elseif(beta > 2.39) && (beta <= 2.40)
    pf = 0.8198e-02;
elseif(beta > 2.40) && (beta <= 2.41)
    pf = 0.7976e-02;
elseif(beta > 2.41) && (beta <= 2.42)
    pf = 0.7760e-02;
elseif(beta > 2.42) && (beta <= 2.43)
    pf = 0.7550e-02;
elseif(beta > 2.43) && (beta <= 2.44)
    pf = 0.7344e-02;
elseif(beta > 2.44) && (beta <= 2.45)
    pf = 0.7143e-02;
elseif(beta > 2.45) && (beta <= 2.46)
    pf = 0.6947e-02;
elseif(beta > 2.46) && (beta <= 2.47)
    pf = 0.6758e-02;
elseif(beta > 2.47) && (beta <= 2.48)
    pf = 0.6589e-02;
elseif(beta > 2.48) && (beta <= 2.49)
    pf = 0.6387e-02;
elseif(beta > 2.49) && (beta <= 2.50)
    pf = 0.6210e-02;
elseif(beta > 2.50) && (beta <= 2.51)
    pf = 0.6037e-02;
elseif(beta > 2.51) && (beta <= 2.52)
    pf = 0.5868e-02;
elseif(beta > 2.52) && (beta <= 2.53)
    pf = 0.5703e-02;
elseif(beta > 2.53) && (beta <= 2.54)
    pf = 0.5543e-02;
elseif(beta > 2.54) && (beta <= 2.55)
    pf = 0.5386e-02;
elseif(beta > 2.55) && (beta <= 2.56)
    pf = 0.5234e-02;
elseif(beta > 2.56) && (beta <= 2.57)
    pf = 0.5085e-02;
```

```
elseif(beta > 2.57) && (beta <= 2.58)
    pf = 0.4940e-02;
elseif(beta > 2.58) && (beta <= 2.59)
    pf = 0.4799e-02;
elseif(beta > 2.59) && (beta <= 2.60)
    pf = 0.4661e-02;
elseif(beta > 2.60) && (beta <= 2.61)
    pf = 0.4527e-02;
elseif(beta > 2.61) && (beta <= 2.62)
    pf = 0.4397e-02;
elseif(beta > 2.62) && (beta <= 2.63)
    pf = 0.4269e-02;
elseif(beta > 2.63) && (beta <= 2.64)
    pf = 0.4145e-02;
elseif(beta > 2.64) && (beta <= 2.65)
    pf = 0.4025e-02;
elseif(beta > 2.65) && (beta <= 2.66)
    pf = 0.3907e-02;
elseif(beta > 2.66) && (beta <= 2.67)
    pf = 0.3793e-02;
elseif(beta > 2.67) && (beta <= 2.68)
    pf = 0.3681e-02;
elseif(beta > 2.68) && (beta <= 2.69)
    pf = 0.3573e-02;
elseif(beta > 2.69) && (beta <= 2.70)
    pf = 0.3467e-02;
elseif(beta > 2.70) && (beta <= 2.71)
    pf = 0.3364e-02;
elseif(beta > 2.71) && (beta <= 2.72)
    pf = 0.3264e-02;
elseif(beta > 2.72) && (beta <= 2.73)
    pf = 0.3167e-02;
elseif(beta > 2.73) && (beta <= 2.74)
    pf = 0.3072e-02;
elseif(beta > 2.74) && (beta <= 2.75)
    pf = 0.2980e-02;
elseif(beta > 2.75) && (beta <= 2.76)
    pf = 0.2890e-02;
elseif(beta > 2.76) && (beta <= 2.77)
    pf = 0.2803e-02;
elseif(beta > 2.77) && (beta <= 2.78)
    pf = 0.2718e-02;
elseif(beta > 2.78) && (beta <= 2.79)
    pf = 0.2635e-02;
```

```
elseif(beta > 2.79) && (beta <= 2.80)
    pf = 0.2555e-02;
elseif(beta > 2.80) && (beta <= 2.81)
    pf = 0.2477e-02;
elseif(beta > 2.81) && (beta <= 2.82)
    pf = 0.2401e-02;
elseif(beta > 2.82) && (beta <= 2.83)
    pf = 0.2327e-02;
elseif(beta > 2.83) && (beta <= 2.84)
    pf = 0.2256e-02;
elseif(beta > 2.84) && (beta <= 2.85)
    pf = 0.2286e-02;
elseif(beta > 2.85) && (beta <= 2.86)
    pf = 0.2118e-02;
elseif(beta > 2.86) && (beta <= 2.87)
    pf = 0.2052e-02;
elseif(beta > 2.87) && (beta <= 2.88)
    pf = 0.1988e-02;
elseif(beta > 2.88) && (beta <= 2.89)
    pf = 0.1926e-02;
elseif(beta > 2.89) && (beta <= 2.90)
    pf = 0.1866e-02;
elseif(beta > 2.90) && (beta <= 2.91)
    pf = 0.1807e-02;
elseif(beta > 2.91) && (beta <= 2.92)
    pf = 0.1750e-02;
elseif(beta > 2.92) && (beta <= 2.93)
    pf = 0.1695e-02;
elseif(beta > 2.93) && (beta <= 2.94)
    pf = 0.1641e-02;
elseif(beta > 2.94) && (beta <= 2.95)
    pf = 0.1589e-02;
elseif(beta > 2.95) && (beta <= 2.96)
    pf = 0.1538e-02;
elseif(beta > 2.96) && (beta <= 2.97)
    pf = 0.1489e-02;
elseif(beta > 2.97) && (beta <= 2.98)
    pf = 0.1441e-02;
elseif(beta > 2.98) && (beta <= 2.99)
    pf = 0.1395e-02;
elseif(beta > 2.99) && (beta <= 3.00)
    pf = 0.1350e-02;
elseif(beta > 3.00) && (beta <= 3.01)
    pf = 0.1306e-02;
```

```

elseif(beta > 3.01) && (beta <= 3.02)
    pf = 0.14264e-02;
elseif(beta > 3.02) && (beta <= 3.03)
    pf = 0.1223e-02;
elseif(beta > 3.03) && (beta <= 3.04)
    pf = 0.1183e-02;
elseif(beta > 3.04) && (beta <= 3.05)
    pf = 0.1144e-02;
elseif(beta > 3.05) && (beta <= 3.06)
    pf = 0.1107e-02;
elseif(beta > 3.06) && (beta <= 3.07)
    pf = 0.1070e-02;
elseif(beta > 3.07) && (beta <= 3.08)
    pf = 0.1035e-02;
elseif(beta > 3.08) && (beta <= 3.09)
    pf = 0.1001e-02;
elseif(beta > 3.09) && (beta <= 3.10)
    pf = 0.9676e-03;
elseif(beta > 3.10) && (beta <= 3.11)
    pf = 0.9354e-03;
elseif(beta > 3.11) && (beta <= 3.12)
    pf = 0.9042e-03;
elseif(beta > 3.12) && (beta <= 3.13)
    pf = 0.8740e-03;
elseif(beta > 3.13) && (beta <= 3.14)
    pf = 0.8447e-03;
elseif(beta > 3.14) && (beta <= 3.15)
    pf = 0.8163e-03;
elseif(beta > 3.15) && (beta <= 3.16)
    pf = 0.7888e-03;
elseif(beta > 3.16) && (beta <= 3.17)
    pf = 0.7622e-03;
elseif(beta > 3.17) && (beta <= 3.18)
    pf = 0.7363e-03;
elseif(beta > 3.18) && (beta <= 3.19)
    pf = 0.7113e-03;
elseif(beta > 3.09) && (beta <= 3.20)
    pf = 0.6871e-03;
elseif(beta > 3.20) && (beta <= 3.21)
    pf = 0.6636e-03;
elseif(beta > 3.21) && (beta <= 3.22)
    pf = 0.6409e-03;
elseif(beta > 3.22) && (beta <= 3.23)
    pf = 0.6189e-03;

```

```
elseif(beta > 3.23) && (beta <= 3.24)
    pf = 0.5976e-03;
elseif(beta > 3.24) && (beta <= 3.25)
    pf = 0.5770e-03;
elseif(beta > 3.25) && (beta <= 3.26)
    pf = 0.5570e-03;
elseif(beta > 3.26) && (beta <= 3.27)
    pf = 0.5377e-03;
elseif(beta > 3.27) && (beta <= 3.28)
    pf = 0.5190e-03;
elseif(beta > 3.28) && (beta <= 3.29)
    pf = 0.5009e-03;
elseif(beta > 3.29) && (beta <= 3.30)
    pf = 0.4834e-03;
elseif(beta > 3.30) && (beta <= 3.31)
    pf = 0.4664e-03;
elseif(beta > 3.31) && (beta <= 3.32)
    pf = 0.4500e-03;
elseif(beta > 3.32) && (beta <= 3.33)
    pf = 0.4342e-03;
elseif(beta > 3.33) && (beta <= 3.34)
    pf = 0.4189e-03;
elseif(beta > 3.34) && (beta <= 3.35)
    pf = 0.4040e-03;
elseif(beta > 3.35) && (beta <= 3.36)
    pf = 0.3897e-03;
elseif(beta > 3.36) && (beta <= 3.37)
    pf = 0.3758e-03;
elseif(beta > 3.37) && (beta <= 3.38)
    pf = 0.3624e-03;
elseif(beta > 3.38) && (beta <= 3.39)
    pf = 0.3494e-03;
elseif(beta > 3.39) && (beta <= 3.40)
    pf = 0.3369e-03;
elseif(beta > 3.40) && (beta <= 3.41)
    pf = 0.3248e-03;
elseif(beta > 3.41) && (beta <= 3.42)
    pf = 0.3131e-03;
elseif(beta > 3.42) && (beta <= 3.43)
    pf = 0.3017e-03;
elseif(beta > 3.43) && (beta <= 3.44)
    pf = 0.2908e-03;
elseif(beta > 3.44) && (beta <= 3.45)
    pf = 0.2802e-03;
```

```
elseif(beta > 3.45) && (beta <= 3.46)
    pf = 0.2700e-03;
elseif(beta > 3.46) && (beta <= 3.47)
    pf = 0.2602e-03;
elseif(beta > 3.47) && (beta <= 3.48)
    pf = 0.2507e-03;
elseif(beta > 3.48) && (beta <= 3.49)
    pf = 0.2415e-03;
elseif(beta > 3.49) && (beta <= 3.50)
    pf = 0.2326e-03;
elseif(beta > 3.50) && (beta <= 3.51)
    pf = 0.2240e-03;
elseif(beta > 3.51) && (beta <= 3.52)
    pf = 0.2157e-03;
elseif(beta > 3.52) && (beta <= 3.53)
    pf = 0.2077e-03;
elseif(beta > 3.53) && (beta <= 3.54)
    pf = 0.2000e-03;
elseif(beta > 3.54) && (beta <= 3.55)
    pf = 0.1926e-03;
elseif(beta > 3.55) && (beta <= 3.56)
    pf = 0.1854e-03;
elseif(beta > 3.56) && (beta <= 3.57)
    pf = 0.1784e-03;
elseif(beta > 3.57) && (beta <= 3.58)
    pf = 0.1717e-03;
elseif(beta > 3.58) && (beta <= 3.59)
    pf = 0.1653e-03;
elseif(beta > 3.59) && (beta <= 3.60)
    pf = 0.1591e-03;
elseif(beta > 3.60) && (beta <= 3.61)
    pf = 0.1531e-03;
elseif(beta > 3.61) && (beta <= 3.62)
    pf = 0.1473e-03;
elseif(beta > 3.62) && (beta <= 3.63)
    pf = 0.1417e-03;
elseif(beta > 3.63) && (beta <= 3.64)
    pf = 0.1363e-03;
elseif(beta > 3.64) && (beta <= 3.65)
    pf = 0.1311e-03;
elseif(beta > 3.65) && (beta <= 3.66)
    pf = 0.1261e-03;
elseif(beta > 3.66) && (beta <= 3.67)
    pf = 0.1212e-03;
```

```

elseif(beta > 3.67) && (beta <= 3.68)
    pf = 0.1166e-03;
elseif(beta > 3.68) && (beta <= 3.69)
    pf = 0.1121e-03;
elseif(beta > 3.69) && (beta <= 3.70)
    pf = 0.1077e-03;
elseif(beta > 3.70) && (beta <= 3.71)
    pf = 0.1036e-03;
elseif(beta > 3.71) && (beta <= 3.72)
    pf = 0.9956e-04;
elseif(beta > 3.72) && (beta <= 3.73)
    pf = 0.9569e-04;
elseif(beta > 3.73) && (beta <= 3.74)
    pf = 0.9196e-04;
elseif(beta > 3.74) && (beta <= 3.75)
    pf = 0.8837e-04;
elseif(beta > 3.75) && (beta <= 3.76)
    pf = 0.8491e-04;
elseif(beta > 3.76) && (beta <= 3.77)
    pf = 0.8157e-04;
elseif(beta > 3.77) && (beta <= 3.78)
    pf = 0.7836e-04;
elseif(beta > 3.78) && (beta <= 3.79)
    pf = 0.7527e-04;
elseif(beta > 3.79) && (beta <= 3.80)
    pf = 0.7230e-04;
elseif(beta > 3.80) && (beta <= 3.81)
    pf = 0.6943e-04;
elseif(beta > 3.81) && (beta <= 3.82)
    pf = 0.6667e-04;
elseif(beta > 3.82) && (beta <= 3.83)
    pf = 0.6402e-04;
elseif(beta > 3.83) && (beta <= 3.84)
    pf = 0.6147e-04;
elseif(beta > 3.84) && (beta <= 3.85)
    pf = 0.5901e-04;
elseif(beta > 3.85) && (beta <= 3.86)
    pf = 0.5664e-04;
elseif(beta > 3.86) && (beta <= 3.87)
    pf = 0.5437e-04;
elseif(beta > 3.87) && (beta <= 3.88)
    pf = 0.5218e-04;
elseif(beta > 3.88) && (beta <= 3.89)
    pf = 0.5007e-04;

```

```

elseif(beta > 3.89) && (beta <= 3.90)
    pf = 0.4804e-04;
elseif(beta > 3.90) && (beta <= 3.91)
    pf = 0.4610e-04;
elseif(beta > 3.91) && (beta <= 3.92)
    pf = 0.4422e-04;
elseif(beta > 3.92) && (beta <= 3.93)
    pf = 0.4242e-04;
elseif(beta > 3.93) && (beta <= 3.94)
    pf = 0.4069e-04;
elseif(beta > 3.94) && (beta <= 3.95)
    pf = 0.3902e-04;
elseif(beta > 3.95) && (beta <= 3.96)
    pf = 0.3742e-04;
elseif(beta > 3.96) && (beta <= 3.97)
    pf = 0.3588e-04;
elseif(beta > 3.97) && (beta <= 3.98)
    pf = 0.3441e-04;
elseif(beta > 3.98) && (beta <= 3.99)
    pf = 0.3298e-04;
elseif(beta > 3.99) && (beta <= 4.00)
    pf = 0.3162e-04;
elseif(beta > 4.00) && (beta <= 4.05)
    pf = 0.2557e-04;
elseif(beta > 4.05) && (beta <= 4.10)
    pf = 0.2062e-04;
elseif(beta > 4.10) && (beta <= 4.15)
    pf = 0.1659e-04;
elseif(beta > 4.15) && (beta <= 4.20)
    pf = 0.1332e-04;
elseif(beta > 4.20) && (beta <= 4.25)
    pf = 0.1067e-04;
elseif(beta > 4.25) && (beta <= 4.30)
    pf = 0.8524e-05;
elseif(beta > 4.30) && (beta <= 4.35)
    pf = 0.6794e-05;
elseif(beta > 4.35) && (beta <= 4.40)
    pf = 0.5402e-05;
elseif(beta > 4.40) && (beta <= 4.45)
    pf = 0.4285e-05;
elseif(beta > 4.45) && (beta <= 4.50)
    pf = 0.3391e-05;
elseif(beta > 4.50) && (beta <= 4.55)
    pf = 0.2677e-05;

```

```
elseif(beta > 4.55) && (beta <= 4.60)
    pf = 0.2108e-05;
elseif(beta > 4.60) && (beta <= 4.65)
    pf = 0.1656e-05;
elseif(beta > 4.65) && (beta <= 4.70)
    pf = 0.1298e-05;
elseif(beta > 4.70) && (beta <= 4.75)
    pf = 0.1015e-05;
elseif(beta > 4.75) && (beta <= 4.80)
    pf = 0.7914e-06;
elseif(beta > 4.80) && (beta <= 4.85)
    pf = 0.6158e-06;
elseif(beta > 4.85) && (beta <= 4.90)
    pf = 0.4780e-06;
elseif(beta > 4.90) && (beta <= 4.95)
    pf = 0.3701e-06;
elseif(beta > 4.95) && (beta <= 5.00)
    pf = 0.2859e-06;
elseif(beta > 5.00) && (beta <= 5.05)
    pf = 0.2203e-06;
elseif(beta > 5.05) && (beta <= 5.10)
    pf = 0.1694e-06;
elseif(beta > 5.10) && (beta <= 5.15)
    pf = 0.1299e-06;
elseif(beta > 5.15) && (beta <= 5.20)
    pf = 0.9935e-07;
elseif(beta > 5.20) && (beta <= 5.25)
    pf = 0.7582e-07;
elseif(beta > 5.25) && (beta <= 5.30)
    pf = 0.5772e-07;
elseif(beta > 5.30) && (beta <= 5.35)
    pf = 0.4384e-07;
elseif(beta > 5.35) && (beta <= 5.40)
    pf = 0.3321e-07;
elseif(beta > 5.40) && (beta <= 5.45)
    pf = 0.2510e-07;
elseif(beta > 5.45) && (beta <= 5.50)
    pf = 0.1892e-07;
elseif(beta > 5.50) && (beta <= 5.55)
    pf = 0.1423e-07;
elseif(beta > 5.55) && (beta <= 5.60)
    pf = 0.1067e-07;
elseif(beta > 5.60) && (beta <= 5.65)
    pf = 0.7985e-08;
```

```
elseif(beta > 5.65) && (beta <= 5.70)
    pf = 0.5959e-08;
elseif(beta > 5.70) && (beta <= 5.75)
    pf = 0.4436e-08;
elseif(beta > 5.75) && (beta <= 5.80)
    pf = 0.3293e-08;
elseif(beta > 5.80) && (beta <= 5.85)
    pf = 0.2438e-08;
elseif(beta > 5.85) && (beta <= 5.90)
    pf = 0.1800e-08;
elseif(beta > 5.90) && (beta <= 5.95)
    pf = 0.1325e-08;
elseif(beta > 5.95) && (beta <= 6.00)
    pf = 0.9716e-09;
elseif(beta > 6.00) && (beta <= 6.10)
    pf = 0.5220e-09;
elseif(beta > 6.10) && (beta <= 6.20)
    pf = 0.2778e-09;
elseif(beta > 6.20) && (beta <= 6.30)
    pf = 0.1483e-09;
elseif(beta > 6.30) && (beta <= 6.40)
    pf = 0.7636e-10;
elseif(beta > 6.40) && (beta <= 6.50)
    pf = 0.3945e-10;
elseif(beta > 6.50) && (beta <= 6.60)
    pf = 0.2010e-10;
elseif(beta > 6.60) && (beta <= 6.70)
    pf = 0.1023e-10;
elseif(beta > 6.70) && (beta <= 6.80)
    pf = 0.5130e-11;
elseif(beta > 6.80) && (beta <= 6.90)
    pf = 0.2549e-11;
elseif(beta > 6.90) && (beta <= 7.00)
    pf = 0.1254e-11;
elseif(beta > 7.00) && (beta <= 7.10)
    pf = 0.6107e-12;
elseif(beta > 7.10) && (beta <= 7.20)
    pf = 0.2946e-12;
elseif(beta > 7.20) && (beta <= 7.30)
    pf = 0.1407e-12;
elseif(beta > 7.30) && (beta <= 7.40)
    pf = 0.6654e-13;
elseif(beta > 7.40) && (beta <= 7.50)
    pf = 0.3116e-13;
```

```
elseif(beta > 7.50) && (beta <= 7.70)
    pf = 0.1445e-13;
elseif(beta > 7.60) && (beta <= 7.80)
    pf = 0.6636e-14;
elseif(beta > 7.70) && (beta <= 7.80)
    pf = 0.3017e-14
elseif(beta > 7.80) && (beta <= 7.90)
    pf = 0.1359e-14;
elseif(beta > 7.90) && (beta <= 8.00)
    pf = 0.6056e-15;
elseif(beta > 8.00) && (beta <= 8.10)
    pf = 0.2673e-15;
elseif(beta > 8.10) && (beta <= 8.20)
    pf = 0.1169e-15;
elseif(beta > 8.20) && (beta <= 8.30)
    pf = 0.5058e-16;
elseif(beta > 8.30) && (beta <= 8.40)
    pf = 0.2167e-16;
elseif(beta > 8.40) && (beta <= 8.50)
    pf = 0.9197e-17;
elseif(beta > 8.50) && (beta <= 8.60)
    pf = 0.3864e-17;
elseif(beta > 8.60) && (beta <= 8.70)
    pf = 0.1608e-17;
elseif(beta > 8.70) && (beta <= 8.80)
    pf = 0.6623e-18;
elseif(beta > 8.80) && (beta <= 8.90)
    pf = 0.2701e-18;
elseif(beta > 8.90) && (beta <= 9.00)
    pf = 0.1091e-18;
elseif(beta > 9.00) && (beta <= 9.10)
    pf = 0.4363e-19;
elseif(beta > 9.10) && (beta <= 9.20)
    pf = 0.1728e-19;
elseif(beta > 9.20) && (beta <= 9.30)
    pf = 0.6773e-20;
elseif(beta > 9.30) && (beta <= 9.40)
    pf = 0.2629e-20;
elseif(beta > 9.40) && (beta <= 9.50)
    pf = 0.1011e-20;
elseif(beta > 9.50) && (beta <= 9.60)
    pf = 0.3847e-21;
elseif(beta > 9.60) && (beta <= 9.70)
    pf = 0.1450e-21;
```

```
elseif(beta > 9.70) && (beta <= 9.80)
    pf = 0.5408e-22;
elseif(beta > 9.80) && (beta <= 9.90)
    pf = 0.1998e-22;
elseif(beta > 9.90)
    pf = 0.1998e-22;
end
if(pf <= 0)
    pf = 0;
end
```