

DEPARTMENT OF POLITICAL SCIENCE

BAYERO UNIVERSITY, KANO

**AN ASSESSMENT OF THE ROLES OF UNITED NATIONS HIGH
COMMISSION FOR REFUGEES [UNHCR] IN THE MANAGEMENT OF
REFUGEES IN MAINE SOROA,**

NIGER REPUBLIC

2014-2015

BY

MODU LAWAN GANA

SPS/12/MPS/00002

MSC POLITICAL SCIENCE

SUPERVISOR

PROFESSOR KAMILU SANI FAGE

2015

TITLE PAGE

**AN ASSESSMENT OF THE ROLES OF UNITED NATIONS HIGH
COMMISSION FOR REFUGEES [UNHCR] IN THE
MANAGEMENT OF REFUGEES IN MAINE SOROA,
NIGER REPUBLIC (2014-2015)**

BY

MODU LAWAN GANA

SPS/12/MPS/00002

**A DISSERTATION SUBMITTED TO THE DEPARTMENT OF
POLITICAL SCIENCE,**

**BAYERO UNIVERSITY, KANO IN PARTIAL FULFILMENT FOR
THE REQUIRMENT FOR THE AWARD OF MSC POLITICAL
SCIENCE**

2015

DECLARATION PAGE

I hereby declare that this work is the product of my own research efforts; undertaken under the supervision of Professor Kamilu Sani Fage and has not been presented elsewhere for the award of a degree or certificate. All sources have been duly acknowledged.

Signature:.....

Date:.....

Modu Lawan Gana

SPS/12/MPS/00002

CERTIFICATION PAGE

This is to certify that the research work for this thesis and the subsequent preparation of this thesis by Modu Lawan Gana with Registration Number SPS/12/MPS/00002 were carried out under our supervisions

Professor Kamilu Sani Fage

Sign.....

Date.....

Dr Abubakar Jika Jiddere

Sign.....

Date.....

Professor Habu Mohammed

Head of Department

Sign.....

Date.....

APPROVAL PAGE

This is to certify that this thesis have been examined and approved for the award of the degree of MSc POLITICAL SCIENCE.

Main Supervisor: Professor Kamilu Sani Fage

Signature:

Date:

Internal Examiner: Dr Abubakar Jika Jiddere

Sign.....

Date.....

External Examiner.....

Sign.....

Date.....

Head of Department: Professor Habu Mohammed

Sign.....

Date.....

ACKNOWLEDGEMENT

I am very grateful to Almighty Allah who through His mercy made this work a reality. I am also grateful to my Supervisors, Professor Kamilu Sani Fage and Dr Abubakar Jiddere who in spite their daily commitments devoted immense attentions through timely response for all complaints and advices. My gratitude also goes to all other lecturers of Political Science Department who through their academic supports in the course of running the programme made the project a reality.

DEDICATION PAGE

This project is dedicated to the family and friends of my beloved father Alhaji Lawan Gana who amidst their difficulties stood prayerful for the realization of the programme.

LIST OF ACRONYMS

ACTED	Agency for Technical Cooperation and Development
AQIM	Al-Qaida in the Islamic Maghreb
AU	African Union
AI	Amnesty International
CAC	Community Action Committee
CSOs	Civil Society Organizations
COOPI	Cooperazione Internazionale
DRC	Democratic Republic of Congo
ECHO	European Commission's Humanitarian Aid Office
ECOWAS	Economic Community of West African States
EU	European Union
FAO	Food and Agricultural Organization
HC	Host Community
HDI	Human Development Index
ICJ	International Court of Justice
ICC	International Criminal Court
IDPs	Internally Displaced Persons
IEDA	International Emergency and Development Aid
IOM	International Organization for Migration
IHL	International Humanitarian Law
IHRL	International Human Rights Law
ISIS	Islamic State of Iraq and Syria
IRC	International Rescue Committee
IRD	International Relief and Development
IMC	International Medical Corps
LRC	Luxembourg Red Cross
OAU	Organization of African Unity
OCHA	Organization for the Coordination off Humanitarian Affairs
MDGs	Millennium Development Goals
MUJAO	Movement for Unity and Oneness of Jihad in Africa
MNJTF	Multinational Joint Task Force
NEMA	National Emergency Management Agency
NRC	Norwegian Refugee Council
PC	Public Concern
RF	Refugee
RT	Returnee
SAM	Severe Acute Malnutrition
SCG	Search for Common Ground
UN	United Nations
UNHCR	United Nations High Commission for Refugees
UNDP	United Nations Development Programme
UNHAS	United Nations Humanitarian Air Services
UNHCR	United Nations High Commission for Refugees
UNFPA	United Nations Population Fund
UNOCHA	United Nations Office for the Coordination of Humanitarian Affairs

UEMOA	Economic and Monetary Union of Africa
WWI	World War One
WWII	World War Two
WFP	World Food Programme
WTO	World Trade Organization
WHO	World Health Organization

LIST OF FIGURES AND TABLE

Table 3.1 Population Distributions of Refugees’ and Returnees’ in Maine Soroa 2014-2015.....	45
Table 3.2 Population Distribution of Refugees’ in Camp in Maine Soroa Refugee Camp 2014-2015.....	47
Table 3.3 Distribution of Respondents Based on Gender in Maine Soroa Refugees Camp 2014-2015.....	47
Table 3.4 Distribution of Populations Sampling Method Based on Gender in Maine Soroa Refugee Camp 2014-2015.....	48
Table 4.1 UNHCR Partners in Niger Republic for the Management of Refugees in Maine Soroa (2014-2015).....	58
Figure 4.1 Percentage Distributions of Refugees in Maine Soroa Town (2014- 2015)	60
Figure 4.2 Percentage Distributions of Monthly Student Enrolments in the Study Center..	69
Figure 4.3 Distributions of Students Based on Local Government of Origin.....	70
Figure 4.4 Distributions of Students Based on Gender in the Study Center	71
Figure 4.5 Distributions of Students by Age.....	72
Figure 4.6 UNHCR’s Budget for the Management of Refugees in Diffa Region 2014.....	74
Figure 4.7.1 UNICEF Budget and Funding Gaps for the Management of Refugees in Diffa Region 2014.....	75
Figure 4.7.2 UNICEF Sectorial Budget and Funding Gaps for the Management of Refugees in Diffa Region 2014	76

TABLE OF CONTENTS

Title Page	i
Declaration Page	ii
Certification Page.....	iii
Approval	iv
Acknowledgement	v
Dedication	vi
List of Acronyms	vii
List of Tables and Figures	x
Table of Contents	xi
Abstract	xiv
Chapter One.....	1
1.0 General Introduction	1
1.1 Background of the Study	1
1.2 Statement of Research Problem.	3
1.3 Research Questions	4
1.4 Objectives of the Study	5
1.5 Research Proposition	5
1.6 Significances of the Study	5
1.7 Scope of the Study	6
1.8 Limitations of the Study	6
Chapter Two.....	8
2.0 Literature Review and Theoretical Framework	8

2.1 Literature Review	8
2.1.1 Global Displacement Overview	12
2.1.2 Displaced Management (Refugees, IDPs, Stateless Persons and Asylum Seekers)...	14
2.1.3 Refugee Problems in Africa	19
2.1.4 The Establishment of the UNHCR	22
2.1.5 UNHCR and Refugees Determinations	26
2.1.6 Boko Haram Genesis in Nigeria	28
2.2 Theoretical Perspective	37
2.2.1 Push and Pull Theory of Refugee Movement.....	39
2.2.1.1 Anticipatory Refugee Movement	41
2.2.1.2 Acute Refugee Movement	41
2.2.1.3 Intermediate Refugee Movement	42
Chapter Three	44
3.0 Methodology and Socio-Economic Features of the study Area.....	44
3.1 Methodology	44
3.1.1 Research Design	44
3.1.2 Populations of the Study	45
3.1.3 Sampling Techniques	46
3.1.4 Method of Data Analysis	49
3.2 Socio-Economic Features of the Study Area.....	49
Chapter Four	54
4.0 Role of UNHCR in the Management of Refugees in Maine Soroa, Republic of Niger.	54
4.1 Reasons of Refugee Status.....	54

4.2 UNHCR and the Management of Refugees in Maine Soroa (2014-2015)58

4.2.1 Refugees’ Registration.....59

4.2.2 Refugees’ Food Aid in Maine Soroa.....61

4.2.3 Refugees’ Shelter and Accommodation65

4.2.4 Refugees’ Health and Sanitations.....66

4.2.5 Refugees’ Education68

4.3 UNHCR’s Constraints in the Management of Refugees in Maine Soroa73

Chapter Five80

5.0 Summary, Conclusion and Recommendations80

5.1 Summary80

5.2 Conclusion81

5.3 Recommendations83

References86

Appendixes94

ABSTRACT

This study examines the roles of United Nations High Commission for Refugees [UNHCR] in the management of refugees exacerbated by the insurgent group Boko Haram in northeastern Nigeria that sought refuge in Maine Soroa's town of Niger Republic between years 2014-2016. The study through the uses of primary instruments of participant observation and interviews examined among others the reasons behind choose of the refugee status than internally displaced person [IDP], the satisfactions of the refugees in the humanitarian exercises as well as determined the major constraints that hindered the commissions' effort in it humanitarian exercises. Push and Pull model were uses in in the analysis of the refugee movement and their managements. The study concluded, although, concerted effort has been observed in the general humanitarian management by the United Nations High Commission for Refugees and her participating agencies, particularly in the provisions of basic necessities of food and shelter, however, general non satisfaction were evident mainly aroused from the poor coordination of services from the agencies. The study therefore recommended for the establishment of a strong coordination body that should be bestowed with the responsibilities of monitoring the deliveries of services for the refugees. It also recommended for the need of refugee's management cost or burden sharing between and among refugee generating and receiving countries.

CHAPTER ONE

1.0 GENERAL INTRODUCTION

1.1 BACKGROUND OF THE STUDY

Since 2011, the Nigeria's north has been devastated by conflict between the insurgent armed group *Boko Haram* popularly called *Jama'atu Ahlis Sunnah Lidda'awatih wal-Jihad* which was translated as People Committed to the Propagation of the Prophet's Teachings and Jihad. In around the year 2014, it has become a topic of the country's media outlets that thousands of the Nigeria's citizens are being displaced to other parts of the country and some to other neighbouring states to escape the dangers inflicted by the insurgent group thereby causing severe humanitarian crises that demanded for an urgent humanitarian services.

While the north remained the scope of most analysis, the three northeastern States of Yobe, Adamawa and Borno were the highly affected horizons. The activities of the insurgents have resulted in the killing and abductions of civilians, destructions of social and economic infrastructure and succeeded in displacing the public. In its anti-terrorism campaign, in May 2013, the Federal Government of Nigeria in its counterinsurgency measure declared a state of emergency with the imposition of curfews in the heavily affected States. However, since the impositions and its subsequent renewals, the activities of the group went unabated. Brandly (2014:21) submitted that "counter insurgency measures by the Nigerian government through conventional combats and total declaration of state of emergency in Borno, Adamawa and Yobe were found to be ineffective as attacks on civilian populations increases unabated." Encountered with this situation, many people fled their homes to escape the depilating circumstances either to the neighbouring States of the country as

internally displaced persons (IDPs) or to other neighbouring countries as refugees. Though accurate data on the number of the people affected by the insurgency were always conflicting, it was estimated that, over two million peoples were heavily affected (Onuoha, 2014). According to a report filed by Norwegian Refugee Council [NRC] (2014), the insurgent *Boko Haram* has forced about 1.5 million people out of their settlements to sought refuge in other parts of Nigeria's including the capital city of Abuja whereas others escaped to neighbouring countries of Niger, Chad and Cameroun since the beginning of it campaign in the year 2009. Another report by United Nations Human Right Commission [UNHRC] also estimated the number of deaths at 20,000 (UNHRC, 2015), however, these figures might have increased since with the intensification of the crises as the insurgent activities went unabated.

The fast growth of the insurgent activity has succeeded in recording Nigeria as among the center of high refugees producing countries of the world particularly after the crises ridden states of Syria, Libya, Iraq, and Afghanistan etc. Report by NRC (2014) has further stated that Nigeria has the largest displaced population in Africa and the third largest in the world after Syria and Colombia. This is just coming at a time when the activity of the insurgent *Boko Haram* was recorded as the second most deadly group in the world precisely after the Islamic States of Iraq and Syria [ISIS] (BBC News, 2014).

Though, the years in *Boko Haram* campaigns are seen as another period of refugees bombshell in Nigeria, effective humanitarian interventions were not earlier ensured as most of the victims sought refuge with relatives while many others in semi established shelters. The huge and frequent flows of the victims that are mostly arriving in terrified situations invited for local and international organizations for management. Two managerial systems are evident; the management of IDPs as internal phenomenon by the Nigerian government through its agency of National Emergency Management Agency [NEMA] and

the management of refugees by the United Nations High Commission for Refugees [UNHCR].

Fulfilling her establishing Protocol, the UNHCR has been monitoring the evolving situation and providing protective responses and humanitarian assistance in collaboration with the Nigerien Government, Non-Governmental Organizations [NGOS], United Nations agencies, Civil Society Organizations [CSOs] and even private individuals for those that crossed border to seek refuge in the neighbouring countries.

In the Republic of Niger's Maine Soroa town where many of the victims sought refuges, UNHCR in collaboration by the government of Niger Republic together with other donor agencies provided wide range protections in settlement and provisions of emergency relief materials under the coordination of United Nations Office for the Coordination of Humanitarian Aids [UNOCHA]. Though accurate record of the refugees is contradicting in Niger Republic, estimates by UNHCR (2015) have put the number at 150,000 (Refugees, Returnees and IDPs) in the Diffa region, whereas an estimated 25,000 were said to be in Maine Soroa town since the beginning of the year 2015 (Community Action Committee [CAC], 2015). A report by the UNHCR revealed that the 2014-2015 refugee populations was in fact the largest since the beginning of insurgency in 2009.

This study therefore examined the extent to which the UNHCR and other donor agencies influenced the humanitarian needs of Nigeria's refugees in Maine Soroa town, Niger Republic.

1.2 STATEMENT OF RESEARCH PROBLEM

Since the intensification of insurgent *Boko Haram* activities in northeastern Nigeria in 2014 coupled with the unabated flows of victims to Niger republic as refugees, there emerged severe humanitarian crises. Since the flights are not precautionary but rather as direct consequences of the group's activities, many of the victims arrived in a terrified human condition mostly lacking in all human

necessities. In Maine Soroa town where an estimated 25,000 peoples were reported to have been hosted (Community Action Committee, 2014), despite the interventions by UNHCR and other humanitarian agencies, complains of inadequate relief materials were prevalent. Most of the refugees in addition to their psychological traumatization, were further subjected to high-level human destitutions arising from gross insufficiency of basic social amenities. Coupled with these challenges were also the cases of harassments by locals and securities agents. According to European Commission's Humanitarian Aid Office [ECHO] (2014), that about 87% of refugees in Niger Republic are in complete lives of destitutions challenged by access to shelter, food and other basic services such as health, nutrition, water, sanitation, hygiene and education. Whereas efforts were intensifies by UNHCR and her participating agencies, there are such other constraints in administrative or managerial aspects of inadequate financing, poor staffing, logistical problems and the general security environment within which the humanitarian services were renders and hence show concern for this study.

This study therefore examined the role of UNHCR in the management of refugees in Maine Soroa town as well as to determine the circumstances that exacerbated the refugees' crises.

1.3 RESEARCH QUESTIONS

1. How does the refugee crisis started?
2. Why do people take refuge in Niger Republic?
3. What are the impacts of UNHCR and other humanitarian bodies in the refugees' management?
4. What are the constraints of the refugee management by the UNHCR?

1.4 OBJECTIVES OF THE STUDY

The major objectives that inform this research are;

1. To examine the causes of the refugee crises.
2. To determine the reasons why people resorted to refugees than internally displaced persons.
3. To examine the impact of UNHCR and other agencies in the refugees' management.
4. To examine the constraints of the agencies in Maine Soroa town.
5. To recommend possible solutions to the problem.

1.5 RESEARCH PROPOSITION

As a guide for the study, the researcher proposed that, the rapid increase in refugee population and resource constraints by the UNHCR and her participating bodies undermined the need for an effective humanitarian management in Maine Soroa town of Niger Republic between 2014 and 2015.

1.6 SIGNIFICANCE OF THE STUDY

Although, the concern for effective refugee management has been a concern for both domestic and international organizations since the end of the second world war, but significant study about refugees in the academic were inadequate whereas the evolving literature are largely dominated by international governmental and nongovernmental organization. According to Mazur (1988), despite its relevancies in contemporary academic of social sciences, the study of refugees was not much emphasized in the academic arena as available literature are mostly dominated by the non-academic setups. To this end, this research through its effort of critical assessment of the refugee situations in Maine Soroa, the study should nevertheless be finding useful to the academia particularly that

of the social sciences. The findings of the study are should be more or less a clarion call for the academics to embark in further research.

In the field of policy, the recommendations made will be useful for future policy options by both the UNHCR and all other humanitarian agencies. The study's findings were expects to make useful recommendations that will help improve the services of humanitarian agencies.

1.7 SCOPE OF THE STUDY

This study is restricted to the examination of the roles of the United Nations High Commission for Refugees and other donors that participated in providing humanitarian assistances to people displaced by *Boko Haram* insurgency in the northeastern states of Borno, Yobe and Adamawa and took refuge in Maine Soroa town of Niger Republic between January 2014 and December 2015. It covered such humanitarian activities as food, medication, shelter and education.

Maine Soroa is the Headquarters of the Departement (Local Government) du Maine in the region (State) of Diffa southeast of Niger Republic. The town is one of the major areas that hosted a large number of refugees in the region. Estimates by a community volunteer group, (Community Action Committee, 2015) put the populations figure in Maine Soroa town at 25,000 (refugees, Returnees and IDPs) in the earlier year of 2015.

1.8 LIMITATIONS OF THE STUDY

One of the major limitations of this study is the inaccessibility of relevant data from concerned bodies for factors majorly attributed administrative bottlenecks, ethno-religious suspicions and fear of national security threats. Although, substantive sizes of the information were obtains through participant observations, information from interviews whose samples were selects through a non-probabilistic method also stands as another limitation of the study.

The second limitation of the study is that, information was largely on the socially less privileged people who usually relied on aids for survival. Most of the information for this study was obtained from camp settlers, who are majorly peoples from poor socio-economic background in their home country as well as physically challenge people who normally relied on societal support for their livelihood even before the escalation of the crises that ignited their flight. So information that relates to many of the elites (the high-ranking civil servants, traditional rulers and business men) majority of whom were reportedly a victim of the anticipatory refugee (refugees that flee before the eruption of violence). Since most of them flee before the crises, they have escaped with most of their properties and has arrangement for their survivals. Their reach for the research information was largely hinder by the nature of their settlement.

The third limitation is that of lingual differences. Most official communiqués from the Niger Government and the UNHCR were channel through the French language, which often found it difficult for the researcher's interpretation. Although, an assistant is solicited from interpreters, but the fact that, information often abuse as it passes through several channels, the reliable of interpretation passage was observed to be a constraint for the study.

The fourth limitation was that of the timeframe. The approximate two years period (2014-2015) within which the study was conducted also found short for complete generalization of its finding as cited by Barry (1981), that any refugee situation investigation within a period of two years is nothing more than psychological examination of the victims. Barry in his study identified five stages involved in refugee study viz: the arrival stage, the adaptation stage, integration stage, resettlement stage and repatriation stage. This study was therefore more of the first two stages of arrival and adaptation stage of the refugee study. The shortest period of time upon which the study conducted was found as hindrance for the efficacy for the generalization of the study.

CHAPTER TWO

2.0 LITERATURE REVIEW AND THEORETICAL FRAMEWORK

2.1 LITERATURE REVIEW

There are significant bodies of literature that has been documents identifying the multiple aspects of refugees' migrations since the Second World War (Haddad, 2004). Whereas the number of literature on refugee was fast growing over the years, the phenomena still remains a content of intellectual debate among scholars. According to Bakewell (2011), though consensus exists among scholars on the multidisciplinary nature of the concept on refugee migration, less agreement still exists about its scope and boundary. It is on this basis, Zetter (1999) concluded that the term refugee defies any meaningful definition.

In a similar vein, Bakewell (2011) further summited that most literature on refugee studies over the years revolved around propounding distinction between forced displacement and voluntary migration. The boundary on which one to differentiate voluntary and force migrants according to Rwamatwara (2005:175) were sometimes marred with controversy. This is because, sometime voluntary migrants due to the nature of their migrations and the miserable status of their flight is much to be equats with the forceful migratory status.

Although, the growing academic confusion in the extant literature is partially emphasize in this study, a clear distinction based on concrete empirical and philosophical thought cannot be underestimated. According to Bakewell (2011:17), the revolving debates between the forced and voluntary migration in most literature is difficult for one ignored for any genuine migratory studies. Differentiating the two concepts on their side (Olson, 1979; Thorsen 2009; UNHCR, 2011) opined that voluntary migrants refer to people who leave their nation-state to settle elsewhere either for economic, social or political opportunities. Whereas forced migrant (involuntary movement) in contrast was

ignites by social and political mayhems such as armed conflicts, human rights violations, election violence. Other factors that forcefully displace people are natural disasters and human induced. They therefore argued that the yardsticks used in equating refugee migration to voluntary migration were much unconvincing. Unlike the voluntary migrant whose primary motive is economic prosperities, family reunification or ascertaining certain political opportunities, refugee's motive is mostly security of lives (Olson, 1979).

Differentiating more in his side, Kunz (1973) stated that, the circumstances within which decisions are made of voluntary and refugee's movement provides the differences between them. He further opined that, whereas the voluntary migrants decides their journey with some certain precautionary measures as well an optical lens of his proposed destinations, the refugee often manage to survive with his life and nothing more. In a different but related contribution, Kunz (1977) re-broadens his contribution in words "refugees and voluntary migrants can be adequately distinguished by way of their flights and resettlements" (Kunz 1977: 23).

In contrast to the refugee movement whose motives was solely life, the prediction and farsightedness of the voluntary migrant is the important factors in the choice of his decisions. He usually makes necessary precautionary arrangements regarding his movement with some scheduled or stipulated date of return. The refugee in reversed run devoid of inner direction and without any scheduled of his/her return.

Another encompassing distinctive feature of refugees and voluntary migration was the one opined by UNCHR (2011a:24), "voluntary migrant in comparison may leave his country for many reasons that are not related to persecution, but mainly for the purposes of employment, family reunification or for study" (UNHCR, 2011a). To this end, the commission dismissed any effort in confining the two (refugee and migrant) into a single theoretical explanation. Refugees are

different from voluntary migrant and so true of their management (UNHCR, 2011).

Whereas the theoretical differentiations of the concept of force and voluntary migrations were much appreciated, a new trend of what the term refugee, who is a refugee and what protection for a refugee is emanating in the academics of migration studies. According to Bakawell (2011), volumes of write-ups circulates in defining what is refugee, but most appeared to be blurred, conflicting and often confusing. The conflicting nature of the term refugee was observed by Zetter (2004:40) who opined that the term refugee is often confused with such other words like asylum, forced migrant, stateless person, displaced person etc. The conceptual confusion between voluntary migration and displacement (Refugee) rendered the subject a difficult task for most analysis (Haddad, 2004).

Refugee being part of the major international problem since the first world war lacks a specific definition, the most propounded definition is the one propounded by 1951 United Nations Convention relating to the Status of Refugees in Article 1a (2) in which it submitted that, a refugee is person

owing to well-founded fear of being persecuted for reason of race, religion, nationality, membership of a particular social group or political opinion is outside the country of his origin, and is unable, or owing to such fear, is unwilling to avail himself for the protection of that country. Or who not having a nationality and being outside the country of his former habitual residence as a result of such events, is unable or, owing to such fear, is unwilling to returns (UNHCR, 2009:12).

According to Ladan (2009:22), the 1951 Conventional definition of refugee is inadequate and incomplete for three reasons. First, it does not take into account of new categories of African refugees who were compelled to leave their countries without been persecuted for reasons mentioned in the 1951 convention. Secondly, their fleeing from their homes may be due to natural calamities such as earthquake, flood, famine, civil war or international armed conflict etc. The third

reason is the absence of group determination of refugee status in case of en masse movement of persons. Zetter (1999) also criticized the division offered by the Convention for remaining too short in scope by according refugee status to only legitimately recognized person. It further stated that the 1951 Convention overemphasis on political refugees (refugee ignited by political violence) with less consideration on contemporary incidences of economic and environmental factors.

In what appeared much like a filling gap, in 1969 the Organization of African Unity [OAU] now African Union [AU] Convention Governing the Specific Aspects of Refugee submitted that, the term refugee shall also apply to

any person who, owing to external aggression, occupation or foreign domination or events seriously disturbing public order in either part or the whole of his country of origin or nationality is compelled to leave his place of habitual residence to seek refuge in another place outside his country of origin or nationality (UNHCR 2011:16).

The OAU Convention is a regional supplement to the 1951 UN Convention and the 1967 Protocol whose emergence and content were most condemned to be Eurocentric. The African Union Convention was the first legal document, which has significantly contributed to the development of general refugee law within the continent. Ladan (2009) opined that, OAU Convention has introduced new trends in refugee law with a view to providing assistance and protection for the refugees in the continent.

The African Convention expanded the definition of refugee thereby extending its protection to a much larger group of persons than that of the 1951 Refugee Convention. While taking care of all the provisions of the 1951 Convention by the provisions of its Article I (1), it also succeeded to break new ground by defining an additional category of persons as refugees, including displaced persons.

In his side, Zetter (1999:19) defined refugee as “forced migrant who was afforded an internationally recognized legal status, given credibility by an international agency specifically charged to safeguard their interests, endorsed most powerfully of all spontaneous philanthropy.”

In the same vein, Andrew & Dummett (1998) cited in (McFadyen, 2012) opined that, refugees’ definition that will be based on wide humanitarian conceptions to replace the narrow conception lies by the Refugees’ Convention of 1951 is desirable. Definition that will acknowledged that, there are certain circumstances apart from the fear of persecutions that will force peoples to migrate from their countries especially when they assume of not guaranteeing comfortable living standard in the future.

Richmond (UD) in his side also opined that, the 1951 Convention’s definition of refugee is inadequate in the face of the contemporary international politics. In comparison he stated, the African Union definition is more encompassing as it allowed for a unique identity, which are absolutely lacking in the Convention.

Despite the increasing concern about the needs of refugee protections around the globe, the miserable status of livelihoods was also increasing, a scenario that demand the attention of world leaders for its management. Cohen and Deng (1998:1) succinctly captured the miserable status of the lives of refugee amidst the legal frameworks in words “large numbers of persons are regularly turned into refugees and subjected into a life of destitution and indignity.” Thousands of people are displaced from their settlements to various parts of the world to escape an emanating violence or disasters from their settlements across the globe, whereas some escaped as internally displaced persons, others as refugees.

2.1.1 GLOBAL DISPLACEMENT OVERVIEW

The number of forcefully displaced peoples (Refugees, Internally Displaced Persons and Stateless Persons) has continued to rise alarmingly around the world. On a daily basis, conflicts, violence, human rights violations and natural

and man-made disasters are forcing millions of people to leave their homes for other places within and outside their countries. Though reports on the number of displaced people around the world are not clear, anecdotal estimates have put it at 60 million people comprising of refugees, IDPs and stateless people (Phillips, 2015); a figure more than the estimated 50 million people displaced during the Second World War (Phillips, 2015). According to a Norwegian Refugee Council (Internal Displacement Monitoring Center [IDMC]), (2014), an estimated 33.3 million people were recorded as internally displaced persons in 2013. This figure according to them represented about 16 percent increase compared to the 28.8 million reported in 2012. UNHCR (2015d) further submitted that 34.5 million people are refugees around the globe in 2014; a figure almost equating the population size of Brazil.

Most disturbing today is the fact that one in every 122 population of the world are displaced (Phillips, 2015). Accordingly, UNHCR, (2015d) an estimated 54% of the global displaced are in protracted refugee situation since 2013. Protracted refugee crises according to UNHCR (2013:5) is “a situation in which 25,000 or more refugees of the same nationality have been in exile for five years or longer in a given asylum country.” Worst reported in 2013 was that (46%) of the refugees under UNHCR are residing in poor countries mostly in countries where their annual GDP per capita was estimated to be below USD 5,000 (UNHCR, 2013). Added to this report was the fact that 86% of world refugees are in developing countries.

Whereas the cases of displacement are a global phenomenon, Sub-Saharan Africa had the largest number with an estimated displacement of 22 million, of which 56.8 percent (12.5) are reportedly IDPS since the year 2013 (NRC, 2014). This was followed by the Middle East with an internally displacement of 9.1 million. Much alarming in the global displacement trend is the fact that about sixty-three percent are from just five countries of Syria, Colombia, Nigeria, Democratic Republic of Congo (DRC) and Sudan (UNHCR, 2015a:23).

Since the beginning of the Syrian crisis in 2011, the number of IDPs in the region has reached almost five times the figure of the five preceding years (NRC, 2014:10). On a global analysis, 43% of forcefully displaced people are Syrians (NRC, 2014).

In Nigeria, though the country is having a historical record of force displacement exacerbated by ethno-religious conflict and political violence since her political independence, a renewed displacement trend by the activities of the insurgent *Boko Haram* beginning in 2009 has triggered more displacement hence updating the country's historical displacement record up to the end of the year 2015. The six years campaign of the group starting in 2009 has estimated to have displace over two million people within and outside the country (UNHRC, 2015d).

More worrisome of the growing displacement trend in the world is the fact that 51% of the displaced are children in 2014, the highest figure in over a decade (UNHCR, 2015). This situation has even become more disturbing in around 2014 and 2015, calling for increased humanitarian assistance worldwide. According to a report by European Commission's Humanitarian Aid Office [ECHO] (2014), 45% of the world's refugees and IDPs are traps in situations of acute displacement lacking in all social necessities. According to the same report, on an average scale, six in every ten refugees live in a state of absolute desperations.

2.1.2 DISPLACEMENTS MANAGEMENT (REFUGEES, IDPs, ASYLUM SEEKERS & STATELESS PERSONS)

Whereas the volume of displacement is increasing around the world, their protections and/or who is responsible for their management have also been an issue of scholarly contest. There existed four categories of displacements (Refugee, IDP, Stateless Person and Asylum Seeker), while the three (refugee, IDP & Asylum seeker) have a common feature as people forcefully uprooted from their homes, their legal definitions and their differential treatments

explained much of their differences. While the concept of refugee's and who is a refugee has been an issue of philosophical contest as earlier observed, much complexity also existed on its dividing line with the phenomenon of IDP and Asylum Seeker. Too complicating is with the concept of internally displaced person and refugee. A "refugee" is someone who has been force to flee his home because of fear of persecution, so also of the internally displaced person (UNHCR, 2013:11). Both are victims of armed conflict and human rights violation who perceives that their lives have been threatens. However, the only difference is that a refugee flees outside his state border. In the case of an internally displaced person (IDP), he is also a person who was force to flee his/her home but who did not cross a state border. Both of them possessed everything in common with particular case as a victim of violence, armed conflict and human right violation; however, the IDPs remained within the domain of his State authority. It is on this ground, according to UNHCR (2010b), that internally displace persons are wrongly define by the members of the popular press and the public as refugees.

The more encompassing difference in the duo is in their managerial category (UNHCR, 2013). The 1951 United Nations Convention relating to the Status of Refugees vested the legal protection of refugee under the international refugee law specifically as a mandate of United Nations High Commission for Refugees [UNHCR]. In the case of the IDPs, since his flight is within the same state border, he is obliged to the protections of his national law. In this case, it is not a business of the UNHCR.

There is no any Protocol in the United Nations stipulating the management of IDPs as existed in the refugee's situation. What existed is a "Guiding Principle" (UNHCR, 2015d). The Guiding Principle on Internal Displacement restating in explicit terms, the rights of IDPs that are implicit in the more general guarantees of existing international human rights and humanitarian law relevant to the internally displaced. Just like the refugee Convention, the Guiding Principles

identify rights and guarantees relevant to the protection of a person from force displacement and to his protection and assistance during displacement as well as during resettlement. The Guiding principles provide as follows:

Principle 3(1) provides that national authorities have the primary duty and responsibility to provide protection and assistance to IDPs within their jurisdiction. This principle further stipulates that IDPs are entitled to enjoy full of rights and freedoms like other persons in the country and shall not be discriminated because of their displacement (Phillips, 2015).

Principle 18 relates to the right to an adequate standard of living, including ensuring safe access to essential food, potable water, basic shelter and housing as well as appropriate clothing and essential medical services and sanitation.

Principle (5) stated that, a displaced person has a broad range rights of economic, social, political, cultural, civil as well as the right of basic humanitarian assistance (food, shelter, medicine) as enjoyed by refugees.

Principle 22(d) specifically identifies the IDPs right to vote and be vote in all elections as well to participate in governmental and public affairs of their country, whether or not they are living in the camps.

Unlike in the refugee situation, one of the major challenges of the Guiding Principle (document stipulating the rights of IDPs and their management) is that, it is not a binding instrument ratified directly by Nation-States. According to Vincent (ud) “even though the team of international experts who prepared the Principles studiously avoided the use of the term ‘definition’, there is frequent ill-informed mention of the so-called IDP definition.” To him, what the Principle propounds is a ‘description’ of what is IDP than definition. For an effective IDP management, a precise definition that will wipe out most of the ambiguities in the Principle’s description is inevitable, because it will be a vital tool for monitoring State’s behaviour and ultimately for holding both States and general international community more accountable for IDPs situations. It is also

theoretically easier to maintain accountability if the identity of the internally displaced is clear.

The Principle's power was majorly an extract from other international human right and humanitarian laws ratified by nation-states in the United Nations or other regional documents (the African Charter on Human and Peoples Right 1981; the European Convention for the Protections of Human Rights and Fundamental Freedoms, 1950; American Convention on Human Rights, 1969 and host of others).

According to Vincent (UD) the needs of the Principle eventuated from the fact that some IDPs flees for persecutions mostly perpetrated by their own governments, but they still remain under the protection of that same government. The Principle therefore advocated for an extended IDPs protection under both human rights and humanitarian laws. It is under the aegis of the "Guiding Principles" that the humanitarian service of UNHCR is extended to the IDPs, a service which is outside its pounding Protocol. As at 2013 according to UNHCR (2013:3), UNHCR is providing protection and assistances to some 10.7 million internally displaced persons across the globe, a highest figure according to them in over a decade.

Unlike the original refugee management obligations, UNHCR's humanitarian mandate to IDPs usually takes the form of

- Advocate on behalf of internally displaced persons,
- Mobilize support for them,
- Strengthen the organization's capacity to respond to their problems,
- Take the lead in protecting and assisting them in certain situations.

However, due to the non-existent of standing internal displacement law, assistance were often selective, uneven and in many cases, inadequate. According to Jastram, Achiron and UNHCR (2001), large numbers of internally

displaced persons receive no humanitarian assistance or protection in so many countries.

At the heart of the distinction between refugee and IDP is the status. Whereas the refugee Convention vested the obligation of refugee management in the UNHCR, which were officially ratified by Member States for their provisions, the Guiding Principles only specified the needs of IDP management without any formal obligation stipulated. Most of its provisions are extracts from other humanitarian laws, which within themselves are not enforcing. By definition,

The term refugee according to 1951 Convention is a person

owing to a well-founded fears of being persecuted for reasons of race, religion, nationality, membership of a particular social group, or political opinion, is outside the country of his nationality, and is unable to or, owing to such fear, is unwilling to avail himself of the protection of that country (UNHCR, 2009:12).

Whereas the term internally displaced person according to Guiding Principles

is a person or groups of person who has been forced or obliged to flee, or to leave their homes, or places of their residence in particular, as a result of or in order to avoid the effects of armed conflicts, situations of generalized violence, violation of human rights and or natural or human made disasters, and who have not crossed an international recognize state boundaries (UNHCR, 2013:23).

Added to the status, another encompassing feature that distinguishes a refugee and an IDP is the political right accorded to the two victims. As a matter of international law and to the fact that he is still within the jurisdiction of his domestic law, the IDPs is allowed to enjoy all the political opportunities enshrined in his national law (right to vote and be voted, Principle 22) as well as the right for unrestricted movement. In the case of the refugee, he is a distinct human being that lacks all the political rights enjoyed by the IDP. The refugees' were allows neither to vote nor to contest in his host country. As a foreigner, the refugee is entitled for some selective rights in his host country.

Another area that was found more confusing in international displacement was the concept of “asylum-seeker.” The asylum Seeker is also a person who has made a claim for a refugee status and is waiting for the process of either acceptance or rejection. According to UNHCR (2011d: 21), asylum-seekers are potential refugees; they are people of concern to UNHCR but should not be granted protections until such stages, as their claims for refugee status have been determined. Similarly, Achiron, Jastram and UNHCR (2001:3) submitted that, not all asylum-seeker will be recognized as refugee, but many will be recognized.

Added to the above is the concept of Stateless Person. Stateless person according to the 1954 Convention on Stateless Person is someone who is not considered as a national of any State under the operation of law. In principle, all human beings belong to a nation and all human rights are to be enjoyed by every person regardless of his/her status. However, in the contents of Nation-State system, certain political rights, the right to a passport and the right of unrestricted residence were only reserved for citizens absolutely discriminating on an alien. As a consequence, Stateless Persons can have problems accessing formal employments, identity and travel documents, housing, medical care and education, even though they may have been born and lived their entire lives in a particular country.

The idea of statelessness often arises because of conflicts of laws when children are born of parents of different nationalities, or when children are born abroad and unable to acquire either the nationality of the State where they are born or the parents’ nationality. In terms of protections, Stateless Persons may be refugees, and thus the standards of treatment set out *inter alia* in the 1951 Convention would extend to them (UNHCR, 2011d: 23). As of 2011 according to (UNHCR, 2011d, UNHCR, 2013:3), an estimated 12 million people are Stateless across the globe.

2.1.3 REFUGEE PROBLEMS IN AFRICA

Africa for long remained a center of refugee producing continent since the slave trade era. Subsequent incidences of refugee's were largely mitigated by violence of political factors and ethno-religious crises. According to Yakoob (2003) cited in Hiruy (2009:50), in Africa violence has become the major headline of their media outlets because it will hardly an hour skip that graphic images of destroyed villages, orphaned children and shattered refugee camps will not be displayed. According to Rutinwa (1999), the largest reported refugee incidence since after the slave trade is the Rwandan crises that forced nearly a million people out of the country just in two months.

The most recent incidence of refugee is the one exacerbated by the dreaded *Boko Haram* insurgent group in Nigeria, a group whose activities was found to have displaced thousands of people within and outside Nigeria since the beginning of its campaign in 2009. Although the actual data of those displaced were always scarce majorly due to non-reached of most of the victims, but anecdotal estimates have condensed it to two million people (NRC, 2014).

The magnitude of refugee incidence was also captured by UNHCR (2002) where it stated that about 60% of the 17 million forcefully displaced people in 2000 around the globe are Africans (UNHCR 2002). Most of the factors for this large volume of refugees according to Bakewell (2011), were political violence, communal clashes, floods and civil stripes which were more prevalent among African countries since their decolonization in the 1960s.

On the top the challenges in the refugee management in Africa was economic difficulty of most of the refugees receiving countries. Haddad (2004) stated that most of the refugees in Africa are concentrated in regions/countries with considerably inadequate capacities to host them such as Niger, Chad, Cameroun, Sudan, Burundi, etc. an avenue which further culminated into widespread human destitutions and political crises.

Founded by the poor economic situations according to Gondyi (2013) conflict often degenerated on economic struggles particularly when a perceived notion was developed by the local population of an economic competition or that presence of refugees have deepened their living standards and have squeezed the availability of social services. According to Atim (2013:4), human displacement in Africa is large and possibly growing in scale. More arguably according to him is that, displaced people are increasingly becoming problematic and that those who succeed in escaping from their country are unable to find a safe refugeism in other States. This scenario according Woodcock (2000:6) has culminated into wanton resistance from host populations, which often manifested in outright rejection and xenophobia. While Richmond (UD) stated that in many host countries, refugees were perceive as platforms for the escalation of violence into their territories and hence are harassed indiscriminately. The fact that refugees' were seen as source of violence is also true of Leoscher (2010) in Atim (2013) that in most developing countries of Sub-Saharan Africa, instead of treating refugees on a humanitarian ground, the presence of refugees culminated further into internal conflicts in the host countries. Rwamatwara (2009:188) also opined that, the presence of refugee in many countries have sparked unprecedented insecurity. This insecurity according to him usually stemmed from the clashing interests between refugees and local communities over local resources and businesses. Atim (2013:5) in his side stated that, in Sudan, access to and control over natural resources, oil, water and human labour have been key factors for violent conflict between refugees and citizens. In many cases also, refugee origin States may launch militarized dispute against refugees' host States. Such dynamics have been recently apparent during the refugee crisis in Darfur and Syria/Turkey (Atim, 2013). UNHCR (2005:24) also summited this "hosting refugees is usually a source of political conflicts in many communities, propounded mostly by fears of overrun of local population in their social and economic spheres." Contributing in his side also, Mcfayden (2012) opined that

conflict between refugees and host population emanated from the economic situations of receiving nations. This was even more pronounced in Africa, where government mostly lacks the capability of providing necessities to their citizens. So the flows of refugees will eventuate further pressure on the limited amenities of the people and hence a source of conflict.

Whereas settling refugees as a source of political conflict, contrarily, influxes of refugee's were also found as economic blueprint as many peoples may stand to gain positively in both economic and social spheres. As in the case of voluntary migrants that may bring human capital and resources that will directly benefit the receiving society, Richmond (UD) opined that the presence of refugees would inevitably invite international agencies that will in addition to their humanitarian aids also brought in foreign investment in areas of transportation and semi industries to the host country. Markets will expand, agriculture will be harnesses, schools and health services will be establishes among others. Harrell-Bond (1986) in Richmond (UD) argued that the influxes of refugees would invite not only international humanitarian agencies, but also researchers into the receiving countries. Using their skills and materialistic resources, they will help in transforming the socio-economic lives of the people. The fact that refugee is an agent of change was also reported by McFadyen (2012).

Writing on the difficulties on refugees particularly in areas of camp administration, Naik (UD) stated that a pandemonium of social challenges comprising of sexual exploitations, child labour and malnutrition are eminent in many refugee camps. Most of these challenges erupted because of the miserable status of the refugee camps. Many refugees particularly women were forced to prostitution to raise fund to supplement their daily needs. In a related contribution, Ituma (2015) summited that harmful traditional practice of genital circumcisions, sexual mutilations, forced and early marriage are endemic particularly in Africa refugee camps.

2.1.4 THE ESTABLISHMENT OF THE UNITED NATIONS HIGH COMMISSION FOR REFUGEES

The legal status for the establishment of Office of the United Nations High Commission for Refugees more commonly referred to as the UN refugee agency or (UNHCR), was established by the UN General Assembly in year 1950. It officially took over in January 1951. Its statute was drafted virtually simultaneously with the 1951 Convention Relating to the Status of Refugees, which became the basic tool of refugee protection in subsequent decades. UNHCR's initial task was to help millions of uprooted peoples mainly in Europe who were still homeless and hungry in the aftermath of World War II, and to seek permanent solutions for them. Arguably, the Convention's most important provision was the obligation by governments not to expel or forcefully return (*refoulement*) an asylum-seeker to a territory where he or she faced persecution. The commission was originally given three years (1951-1954) to accomplish the task, however, as new refugee crises proliferated across the globe, the mandate was repeatedly renewed until the UN General Assembly in 2003 abolished this requirement (UNHCR, 2010b).

As an expansion of the Convention, in 1967 a Protocol was adopted to strengthen global refugee protection by removing the geographical and time limitations written into the original Convention under which mainly Europeans involved in events occurring before January 1951 could apply for refugee status. Since its establishment, the agency has worked not only to strengthen legal instruments such as the 1951 Convention, but increasingly has assisted related groups such as IDPs and the Stateless Persons. It has also worked directly in conflict areas and has provided material as well as legal assistance to help victims of major natural disasters.

In 2001, the most important global refugee conference in half a century adopted a landmark declaration reaffirming the commitment of signatory States to the

1951 Refugee Convention. Through a process of global consultations, UNHCR drew up an “Agenda for Protection,” which continues to serve as a guide to governments and humanitarian organizations in their efforts to strengthen worldwide refugee protection.

In 1974, UNHCR was designated by the UN as the agency responsible for monitoring and protecting all stateless persons in the world. It is also a key player in the United Nations “cluster approach” to help millions of internally displaced peoples, who unlike the refugees’ has never had single agency totally dedicated to their well-beings.

Part of the UNHCR’s mandate is to coordinate the provision and delivery of such items, manages or helps manage individual camps or camp systems, and has designed specific projects for vulnerable women, children and older people who mostly comprise about 80 per cent of a “normal” displaced people (UNHCR, 2015d).

Education has also become a major priority of the agency once the emergency phase of a crisis is over. UNHCR seeks durable solutions to refugees’ plight, by helping them repatriate to their homeland if conditions warrant, or by helping them to integrate in their countries of asylum or to resettle in third countries. Due to its limited and Eurocentric approach, the Conventions scope was expanded in 1967 with a Protocol 1967.

According to Owutu (2014), the importance of both the 1951 convention and the 1967 protocol is to propound international sets of rules and guidelines for adequate treatment of refugees and protection of their human rights and dignity globally. Both the two documents clearly spelt out who are refugees and the kind of legal protections and social rights he/she is entitled to receive. They also stipulated a refugee’s obligations to host country.

In addition to their legal protections to refugees, the documents helped inspire some important regional refugee protection laws, such as the 1969 OAU Refugee

Convention, the 1984 Cartagena Declaration in Latin America and the development of a Common Asylum System in the European Union (UNHCR, 2011). Today, the 1951 Convention, 1967 Protocol together with the regional refugee laws remained the framework of refugee protections throughout the globe. Rutinwa (2011) has succinctly captured this in his words “the provisions of the 1951 convention and the 1967 protocols in spite of their criticisms are more relevant than when they were drafted.”

The 1951 Convention was nevertheless the first international policy document on refugee management and protection (UNHCR, 2009b). Ramatwara (2009) and McFayden (2012:11) have also submitted that the 1951 convention is one of the most widely ratified refugee document in the international politics. States parties to the Convention are obliged to perform in good faith the provisions stated and or ratified (1951 Convention). Parts of its provision were the need of Member States to protect the refugees in their territory according to the terms and conditions of the Convention. Some of the roles of states parties in the 1951 Convention and the 1967 Protocol are;

- a. To Cooperate with UNHCR (Article 35 of the 1951 Convention; Article II of the 1967 Protocol) in the exercise of its functions and, in particular to help UNHCR supervise the implementation of the provisions stated in those treaties.
- b. Reconciling domestic laws with the refugees’ policies as well as avoidance of any laws that shall or may hinders the application of the Convention’s provisions in their territories.
- c. Where according to a domestic law of a member country, the granting of right to an alien is subject to the granting of similar treatment by the alien’s country to his citizen (reciprocity), this will not apply to refugees. The notion of reciprocity does not apply to refugees since they do not enjoy the protection of their home country.

In protecting the rights of refugees, the Convention has put forward a number of mechanisms. One of the basic principle is the non-expulsion right of refugee unless under a strictly certified condition relating to national security jeopardy (Article 32 of the 1951 Convention). Likewise, Article 31 guarantees the right of entry and the right not to be punish when entered as a refugee to the host country. The rights to work in host country and the conditions guiding it, were provided in Article 17, 18 & 19 whereas the right for shelter is stipulated in article 21 of the Protocol. The Protocol in its provisions of Article 22 provided for the right of education for refugee in their host country. Other rights stipulated include;

- a. The right to public relieves and assistances (Article 23).
- b. The right for the freedom of religion (Article 4).
- c. The right to access the court of laws (Article 16).
- d. The right to be issues with identity and travel documents (Articles 27 and 28).

As earlier observed, one of the efficacy of the refugee Convention is the ability to induce other legal framework on regional levels. According to UNHCR (2011d:13), since the adoptions of the Refugee Convention and its subsequent Protocol, additional regional legal instruments evolved in international refugee management. In many regions of the globe, the Convention's refugee definition has been broadens to include victims of indiscriminate violence. For example, the 1969 OAU Convention Governing the Specific Aspects of Refugee Problems in Africa explicitly applies not only to persons fleeing persecution but also to those fleeing situations of generalized violence. In Latin America also, the 1984 Cartagena Declaration on Refugees recommended a refugee definition which includes persons who have fled their country because their lives, safety or freedom have been threatened by generalized violence, foreign aggression, internal conflicts, massive violation of human rights or other circumstances which have seriously disturbed public order. Although the Cartagena Declaration

is not all that binding, but its definition has served as the basis for recognition of refugee status in quite a number of Latin American States (UNHCR, 2011d).

2.1.5 UNHCR AND REFUGEES' DETERMINATION

The 1951 Convention defined a refugee as a person

owing to well-founded fear of being persecuted, for reasons of race, religion, nationality, membership of a particular social group or political opinion is outside the country of his nationality and is unable, or owing to such fear, is unwilling to avail himself of the protection of that country. Or who, not having a nationality and being outside the country of his former habitual residence as a result of such events, is unable or, owing to such fear is unwilling to return (UNHCR , 2011d:18).

In addition to individuals who meet the criteria in the 1951 Convention's definition, UNHCR recognizes refugees as persons who are outside their country of nationality or habitual residence and unable to return there owing to serious and indiscriminate threats to life, physical integrity or freedom resulting from generalized violence or events seriously disturbing public order. Based on this definition, UNHCR's mandate to protect refugees also extends to persons who are affected by the indiscriminate effects of armed conflict or other event that have seriously disrupted public order.

This definition is however criticized for using "inclusion clause." It defined positively who is refugee, but certainly an individual that does not fulfill the Convention status were excluded from the protection. These include persons who could be considered persecutors, having committed one or more of the following crimes: a crime against peace, a war crime or a crime against humanity; a serious, non-political crime prior to admission in the asylum country; those facts are contrary to the purposes and principles of the United Nations refugee agency (UNHCR, 2011d:14).

Although, the convention has made a significant achievement in the settlements of refugees worldwide, it was nevertheless criticized in several perspectives.

Rwamatwara (2005:25) have opined this in words “in spite of the expansion in the scope of refugee protection by the 1967 Protocol, the despairs of refugees have grown ever before.” In the same vein, McFadyen (2012) also opined that, since the establishment of UNHCR in 1951 as the first international refugee agency, the refugee situation has not abated and if anything, the situation of refugees globally is as perilous as ever before.

Multiple factors was attributed for the malfunctioning of the commission particularly in developing countries, among which include the perennial crises of political and social aspects manifested mostly by ethnicity, religious conflict and election violence. Other factors that create spatial refugees in Africa are natural disasters of floods, earthquakes, famine and communal clashes.

According to Samers, (2010), resources constraints and the inability to fulfilled financial quarter by member countries culpable for inefficiency of the commission on refugee management.

Other factor according to (Rwamatwara, 2005), is the improper identification of citizen due to lacked valid national identification documents by many refugees also hindered the successes of the Convention. In Africa for example, the historical linkage of their citizens in the pre-colonial era accorded another difficulty in proper identifications of the various nationals. These situation often renders differentiation between refugees and non-refugee citizen arduous. While Whittaker (2008) in McFayden (2012:11) also opined that, domestic legal frameworks that often contradicted the international refugee laws often faulted the implementations of refugee Convention in most African States. The problem of reconciling national interest with community obligations was also captured by Ladan (2009:6) in words “subjective national considerations often override the dictates of successful implementations of international protocols” (Ladan 2009:6).

Other encompassing refugee problems in the extent literature (Hiruy, 2009; McFadyen, 2012; Kunz, 1973; Degu, 2002:14) were the issues of harassments, intimidations and persecutions. These scenarios often persisted amidst the concerted effort in the management of refugees by UNHCR, Member States and other donors.

2.1.6 BOKO HARAM GENESIS IN NIGERIA

It is certainly not clear when *Boko Haram* was established or introduced in Nigeria. However, its origin according to Onuoha (2014) can be trace to 2002. That according to him is the time when the sect's spiritual leader (Yusuf) took up the mantle of its leadership. Since its emergence, *Boko Haram* has been constantly switching names as it has been called *Hijrah*, *Alis Sunnah Wal Jama'a*, *Yusufia*, Nigeria Taliban among others. This constant switching of names rendered it difficult to trace the real origin of the sect. In spite of the uncertainty in its creation, *Boko Haram* notwithstanding obtained a national and international recognition with its bloodiest uprising with the Nigerian government in July 2009; an incidence which claimed the lives of its leaders and host of other members. After a short-lived anti-insurgency military offensive campaign, it went on silence. However, prior to this attack (2009), *Boko Haram* was observed on some skirmishes of remotely attacks. Its first deleterious action in Nigeria was noted on its attack on Kanamma town (a town situated at the immediate border between Nigeria and Niger Republic in Yobe State) on 24 December 2003. Hundreds of the locals were forced to flee for months. However, after an offensive military action in a couple of weeks, the sect force on silence. Although, records of casualties are skewed, Thomson (2012) has reported that, substantive percentages of the public buildings were razed down.

Acknowledging the emergence in its side, Amnesty International [AI] (2015) also submitted that *Boko Haram* [Western education is sacrilegious] properly called *Jama'atu Ahlis Sunnah Lidda'awatih wal-Jihad* [People Committed to the

Propagation of Prophet's Teachings and Jihad] was founded in 2002 with the objective of a society based Islamic propagation. Though the group embarked on ideological spreading through Islamic preaching, it took arms against the government in 2009. However, after an extensive clashed with the Nigerian security forces, its founder and its charismatic leader (Muhammad Yusuf) was extra judicially killed in police custody. In what it appeared as revenge, the group began a series of gruesome attacks against the Nigerian police, but this has since extended to the civilians. According to Thomson (2012), in its anti-west campaign, *Boko Haram* attacked schools, teachers and students to prevent people from receiving western education.

In a bit to flush out the elements of the group, in mid-2013, state security forces in collaborations with local vigilante groups succeeded to push them out of the major cities including Maiduguri (the stronghold of the sect) where they had been living with the local populations. This nevertheless forced *Boko Harams* moved to other remote communities and underwent their campaigns. While many others sneaked into Sambisa forest, the present headquarter of the sect in Borno state to continue campaigns. From these bases, *Boko Haram* is almost launching a daily attacks against the civilian population until it started conquering towns in around 2014.

In its earlier days of it campaigns on membership and ideology, Yusuf set up a religious complex in Maiduguri the Borno State capital with a mosque and an Islamic school on free service. His school therefore attracted not just the region's poor, but even people from nearby countries. Through this medium, Yusuf modeled his campaign on anti-corruption and anti-west strategies, an idea that received widespread acceptance by the locals. Okereke (2010) in Campbell (2012) posited that the recruits in *Boko Haram* are indoctrinated by Yusuf to believe that their states of miserableness was caused by government which

imposed western education with its corrupt institutions that squandered and mismanaged resources needed for general development.

Memberships of *Boko Haram* were perhaps from all occupations. Onuoha (2014) has also opined that memberships of *Boko Haram* entailed a bunch of angry unemployed young men and women with competent and prerequisite skills. This contention is also true of Alozienwa (UD) who also submitted that *Boko Haram* mobilized its membership from women and children, school dropouts and unemployed university and polytechnic graduates.

However, it is less arguable that large continuum of people composed the group members; Okereke (2009) in Campbell (2012) opined that the memberships of the group were mainly from the socialized disadvantaged people in the society. In his side, Abbas (UD) opined that *Boko Haram* stemmed from the unaddressed problem of the de-cultured youth who are potential recruit into the terrorist cells. The de-cultured youth according him suffer from poverty, unemployment, destitution, lack of education, or even disillusionment after education and ultimately become frustrated and alienated from society.

While the group succeeded in establishing a strong membership, it lacked strong hierarchy in its earlier years. Its administration was centralized and mainly on directives from its leader (Yusuf). In addition to its centralized administration, the group also operates a clandestine cell system using a network structure. Campbell (2012) has also opined that, *Boko Haram* kept its memberships diffused and failed in a strong organization. This argument was more justified after the death of its founding leader on who to succeed him. According to Onuoha (2014), speculation existed that the post Yusuf leadership struggles among the sect culminated in the emergence of splinter group (Ansaru) under the mantle of erstwhile Yusuf's military commander (Nur) and a major faction under the leadership of Abubakar Shekau (the purported deputy of Yusuf). According

to Onuaha (2014), the leadership crisis after the death of Yusuf was observed as the major factor that dimmed the activities of the sect for nearly two years.

The re-emergence of the group in 2011 with a series of gruesome attacks on its critics has largely put it on the radar of Nigeria and other regional security watch. In what was observed as a revised strategy, *Boko Haram* embarked on a series of suicide bombings that usually claimed hundreds of innocent lives. *Boko Haram* strengthened its international recognition with its deadly attacks on the United Nations building in Abuja in August 2011 barely a month after a similar attack in June 2011 on the Nigeria Police Headquarters in Abuja. According to NRC (2014a:5), the sect's attack on United Nations Building in Abuja in August 2011 spoke on the strengths of its activities. The groups' modus of suicide bombings and raiding of military establishments has been witnessed by most of the Nigeria's northern states.

The international recognition of the sect became more pronounced in April 2014 when *Boko Haram* abducted over 200 schoolgirls in their dormitories in Chibok town (Borno State), which triggered up an international campaign tagged "*bring back our girls*." Up to the time of this report, Chibok girls remained an issue that questioned the supremacy of the Nigerian State. The abduction of two (2) Italian priests and 10 Chinese contractors as well as a German citizen in 2014 also heightened the group's international watch. Since 2013, *Boko Haram* was also linked to a number of foreign kidnappings. According to Onuoha (2014), *Boko Haram* have also been accused of kidnapping seven French tourists in the far north along Cameroon border, while a French priest was kidnapped in the month of November 2013.

The sect in spite of its coordinated and gruesome attacks over the years lacks a well-defined manifesto. This inability of a well-defined manifesto made it in the opinion of many as objectiveless. According to Onuoha (2014), the evolution of the sect through a more dynamic but centralized organization has also succeeded

in combining and changing tactics in its operations, but it nevertheless lack definite objective. According to an independent research by Internal Displacement Monitoring Center [IDMC] (2014), the objective of the sect is largely defined as an act of religious radicalism which its prevalent was long observe within many states in northern Nigeria since the country's political independence. Similarly, NOREF (2012) also summited that, Nigeria's north has a long history of religion radicalism, so the emergence of *Boko Haram* was largely a resurface of other radical Islamic movements in the country. Other factors that have deep root according to IDMC (2014) are the social and economic marginalization characterized by chronic poverty, pervasive corruption, and political impunity, which have long been standing factors in northern Nigeria. Abiye (2011) also noted that domestic terrorism arose in Nigeria because of weak state institutions. Militant groups took advantage of government's ineffective action in dealing with the fundamental elements of nationhood. Other factors according to Patrick and Felix (2013) are internal security, resource control, injustice, corruption, ethnicity, sycophancy, favoritisms, and marginalization. These factors have made terrorism to be ethnicized among Nigerians.

In contrast to the above, Patrick and Felix (2013) further stated that the group's attacks are politically motivated even though some may have other ancillary motives such as religious, economic or social factors.

While *Boko Haram* reportedly succeeded in launching terror in the Nigeria's North, determinations of its actual number of casualties is usually scanty as most of the communication gazettes were destroyed in the affected areas. However, one can nevertheless summit that the magnitudes of lives and property lost within the stated period cannot be underestimated. In 2014 alone, according to a report by Amnesty International (2015), *Boko Haram* has reportedly submitted to kill more than 4,000 people; about half of which was said to have

been recorded in the last three months of the year. A report by Human Right Watch has also put the number of those killed since the beginning of the sect at 20,000 while hundreds of thousands were displace within and outside Nigeria. The group has also succeeded in looting towns and villages, killed and kidnapped residents, used forced conscription and abducted women and girls among others.

The magnitudes of the sect incidences was succinctly capture by the report of Amnesty International (2015:11) in words, “*Boko Haram* has wreaked havoc and suffering on the lives of millions of people in north-east Nigeria since 2009. The armed group has killed thousands, abducted at least 2000 and forced more than a million to flee their homes.”

In terms of funding, it was opined that, *Boko Haram* receives most of its take-up funds through membership contributions as most of the group members disposed their belongings and surrendered them to their erstwhile leader. Subsequent funding was through bank robbery, kidnapping for ransoms and compulsory levies on its conquered territories among others.

Counter insurgency measures through tactical and conventional measures to curtail the menace of the sect by the Federal Government yielded less result as the sect continues to expand its territory. In mid-2014, the terrorist group has taken control of swathes of territories in Borno, Yobe and Adamawa States. According to an online media report (naij.com 05/01/2015) the estimated size conquered by the group stood at 50,000 square kilometers as in January 2015; an area summed as larger than the size of Greece or Belgium (naij.com,05/01 2015). Attempted attacks to take over the capital city of Maiduguri and Damaturu were unsuccessful, but the residents have been experiencing havoc on daily basis since 2011.

The rapid expansions in membership and armories as well as the intensive military training of the group developed suspicion by the Nigerian Authorities that *Boko Haram* has been infiltrated by foreign groups as well as receiving assistance from foreign nations. According to Ahmed and Chilaka (2013), the claims of foreign infiltration of *Boko Haram* by Nigerian government culminated into the deportation of about 7,000 immigrants mostly from neighboring countries of Chad, Niger and Benin Republics. However, many have expressed doubt with certain proclamations as the suspected countries have been experiencing similar attacks since the beginning of 2015.

The activities of the group in no less undermined the integrity of the Nigerian State. In addition to the daily destructions of lives and properties, it has succeeded in maiming prospective foreign investors to sink their capital into the economy, an incidence that further deprived the country of its projected economic prosperities. According to Ahmed and Chilaka (2013), losses incurred by traders and businesspersons are only an aspect of the incalculable damages the activities of the terrorists (*Boko Haram*) have caused the country's economy. Parts of the spiral effect on the national economy are the flush out of southerners residing in the north to their region. Some northern youth who are uncomfortable with the spate of insecurity were also part of the influx to the south (Ahmed & Chilaka, 2013). A World Investment Report of the United Nations Conference on Trade and Development [UNCTAD] (2014) estimated that, the domestic economy of Nigeria has so far lost a whopping foreign direct investment of about N1.33 trillion to the activities of *Boko Haram* (UNCTAD, 2014). The Nigerian tourism sector according to Ladan (2012) which generate about N80billion annually has lost more than half of its value due to fear of terrorist attacks. When the loss of human capital is add, the figure is indeed overwhelming and far more than what is currently analyze. These huge losses by the country's economy are a fall out of the fears created in the minds of prospective foreign and local investors by the incessant bombing campaigns of the sect. It is ultimately right

for one to opine that, in the prevailing security situations that no serious investors, foreign or local would risk his life or funds by investing in an unsecured country, and this is nevertheless dragging the national economy down. Ladan (2012) has further opined that with the current show of events, normal social and economic life is unlikely to return soon to states like Kano, Yobe, Borno, Plateau and Kaduna (Ladan, 2012).

According to Onuoha (2014), the activities of *Boko Haram* have significantly undermined the sovereignty of the country. While Nigeria was known and respected for her strong military formation since her independence and remaining the fourth largest contributor to the United Nations Peace Commission with successful records of peace missions in Liberia, Sierra Leone and more recently in Darfur and Mali, the inability to contained her internal crises have long tarnished her security image.

With the fast and rapid escalation of the crises to the neighboring countries of Cameroun, Chad and Niger Republic, *Boko Haram* has now moved from national to regional issue. Onuoha (2014) has further opined that unless concerted effort was gears in the region, *Boko Haram* will soon be a regional issue an opinion that has long been justified in the prevailing political circumstances.

The rapid escalations and devastating effects of it activities now prompted a cooperation and collective action among the countries of Lake Chad Basin Commission (Benin, Cameroun, Chad, Niger and Nigeria) which have now been witnessing the formation of joint military force (Multi National Joint Task Force [MNJTF]) for cooperative action.

2.2 THEORETICAL PERSPECTIVE

The process of identifying refugee migration into a definite theoretical framework has been a subject of philosophical debate. While the literature on international migrations expands at a seemingly exponential rate, significant statements about the theorization of refugee migration is not common as they are mostly hindered by the increasingly diversifying types of movements. According to King (2013), the study of migration has been widely confused by the introduction of various conceptual frameworks such as mobility studies, transnationalism, diaspora study etc. It should be clear from the foregoing that migration is too diverse and multifaceted to be confined into a single theory. This contention has led to some migration scholars like Arango (2004) to claim that migration is a weakly theorized concept. The growing typologies in migration studies according to King (2013) that migration study is a challenging field in the social science discipline. Richmond (UD) also opined that most migration theories over the years concentrated on sociological thought constantly projecting on a dissection between voluntary (free migration) and involuntary (refugee) movements. Included in the former were seasonal, nomadic and other temporary movements. Richmond further opined that voluntary migration is more permanent and largely economic in nature, while involuntary movements include slaves and those impelled by war and war related crises. Petersen (1958) in Kunz (1973) further classified migration into conservative and innovative types. In the former, he identified force displacement while in the later; slave trades and coolie trades were identified as example. For example, group settlements were essentially conservative, essentially enabling the migrant to preserve a traditional life-style in varying degrees whereas in the innovative type, migration is largely on social change. The growing conceptual confusion and the increasing complexity of the conditions that exacerbate migratory movements rendered the subject difficult for theorization. Zetter (2004) has also summited that in words “the ever complex nature of migration studies made it difficult to

point any reliable distinction between movements of people that may be considered voluntary or involuntary, forced or free” (Zetter, 2004:134).

However, the above conceptual confusion is not a concern of this study as there are myriads of theories evolving in the field of involuntary migration. However, even though comprehensive reviews of theories are seemingly difficult, effort was nevertheless been intensified to identify some relevant theoretical contentions. David in Kunz (1973:25) has also observed that, “there is no single sources summarizing the waves of refugee migration as the available literature are widely scattered and much encompassing.”

Most theories of refugees were nevertheless contradicts with the concept of voluntary migration. However, the momentum of forced migration coupled with the complex nature of its management envisage for a concrete theory. However, the debates on voluntary and force migrations have been submitted by most of the extant literature e.g. Kunz, 1973; Bakawell, 2011; UNHCR, 2011 & UNHCR, 2013); the significance of theory in the study of forced migration cannot be underestimated. Kunz (1973) has opined that a comprehensive study of refugee cannot be undertake without the existence of a workable theory, based on a fruitful refugee typology and resting on suitable conceptual categories.

Although, as earlier envisaged, universal theory of refugee is almost difficult, there existed volumes of philosophical contentions touching on specific aspects of displacements. According to Kunz (1973), that universal theory of refugee is almost not available and formulating a theoretical framework for specific study design is difficult, highly specialized and time-consuming. This difficulty aroused mainly on the varying types of movement of victims.

Another difficulty attributed in propounding a general theory of refugee according to Hiruy (2009 & Kunz (1973:128) that refugee crisis is an urgent phenomenon that require an immediate attention. To them, the need for

operational actions when the world is confronted with the emergence of refugee problem is undoubtedly one of the reasons why a generally applicable refugee theory has not yet been attempted.

Kunz (1973) further opined that the manner in which refugees made their decisions further compounded for a major difficulty. For example, while some refugees were able to leave in advance or else in anticipation of emanating crises, others are forcedly displaced at the onset of the crises. Jamming these two blocks into a single theoretical framework usually accompanied with severe criticisms.

These theoretical confusions created a large vacuum in the study of refugees. These were also opined by Mangalam and Scharweller, in Kunz (1973:129) in words, “implicitly or explicitly, researches on migration appear to treat each situation as a unique case and hence left a large vacuum.”

Amidst the contradicting literature on the theorization of refugee migration, the study of this genre will nevertheless be anchored on a theoretical perspective that will explain the entirety of the conditions that will warrant the migratory decision of refugees. On this note, this study was anchored on push and pull perspectives of Kunz (1973).

2.2.1 Push and Pull Theory of Refugees' Movement

Any review of refugee migration must be acknowledged if not paid homage to, Ravenstein's (1885, 1889) laws of migration. Though opinions varied on its strength in the historiography of migration studies, it has nevertheless gained acceptability in most modern writings. Ravenstein's idea which was later coined by Kunz (1969; 1973) submitted that, migrations were based on push and pull factors. The push factor of the old home environment provides the migrant with the causal motivations to leave his country, while the pull factor of the destination country provides him with a purpose and the wish to migrate. In this sense the push and pull factor explains motivations. Push-Pull factors dominated

much migration thinking during the mid-twentieth century (Samers, 2010). Although, the strength of the push and the pull kinetics has been challenge of having some important selective effects, the theory remained relevant to many scholars. For example, Samers (2010) in King (2012) describes Kunz's postulation as economically un-deterministic, methodologically individualistic and dreadfully antiquated. King (2012:13) in his own side also denounced the push and pull model of combining an individual rational-choice theory with the broader structures of migration.

King (2012) further opined that, the simplistic approach of identifying migrations majorly driven by sets of push and pull factors; with the push factors conspicuously assumed to have been emanating from region or country of origin of refugee for factors mainly attributed for high level poverty, unemployment, landlessness, rapid population growth, political repressions, poor marriage prospects. And the pull factors emanating from country of destinations such as better income gains, job prospects, quality education, improve welfare systems, availability of land, good agricultural climates, improve living conditions and political opportunities are not enough to explain all types of refugee's migrations.

Founded by the intense criticisms, Kunz has since strived to give a new dimension to his push-and-pull theory. He used a modified "*push-pressure-pull semantic construct*" to distinguish, first, between movements of free migrants and refugee settlers and, secondly, to isolate refugee subtypes. Explaining the flight and settlement pattern of the overwhelming majority of refugee settlers, Kunz opined that it conforms to either of the two kinetic types to which the terms anticipatory refugee movement and acute refugee movement has been given.

2.2.1.1 Anticipatory Refugee Movement

The anticipatory refugee according to Kunz is the one who arrives to the door of the country of asylum, leaves his country prepared before the deterioration of the military or political situation that may prevent his orderly departure. He arrives with the prerequisite skill as well as the language of the host country and some finance in disposal. The refugee in this category is also informed or has arranged the ways he can re-enter his trade or profession among others. Although, the anticipatory refugee status is more advantageous over the acute refugee (acute refugee is a person who leaves his country when security situations deteriorate), but in a situation when the anticipated (projected) calamity does not occur, the refugee may stand to lose as a result of the cost of his relocations.

From a purely kinetic point of view, Kunz opined that anticipatory refugee movement appears to follow the series of both push-and-pull factors. However, the push factor is overwhelming than the pull motivations. For example, a person under the apprehension of future calamities determinedly seeks out a possible country of settlement, and as soon as he finds the one willing to accommodate him, he makes his way there. His degree of movement depends on the perceived eminency of the anticipated danger confronting him.

2.2.1.2 Acute refugee movement

Acute refugee movement contrasted sharply with the anticipatory refugees' movement both in its selectiveness and in kinetics. Acute refugee movement arises/ignited mostly from great political changes or movements of armies. Unlike the anticipatory refugee movement that the victims have some preferences in advance, the acute refugee escapes mostly with nothing rather than his life. In this type of movement, the refugee is usually disunited with his/her family member mainly because the movement is usually disorganized and in a burst of individuals to varying destinations. Most refugees in this category are

over traumatizes than the anticipatory refugee. Sometime movements will occurs en masse in this refugee category but when the flight was obstructs, in bursts of individuals or groups. The primary objective of the refugee in this category is to reach for safety in any country that may grant him/her protections.

Both the push and pull kinetics are evident in the acute refugee movement. However it has since been reported by Kunz (1973) that the push factor is overwhelming whereas the pull factor is either lacking in spontaneity or is totally absent. While passing through the border of another country, the refugee partaking in acute movements is also in mind that further migration may follows if it happens the security situation of his/her host country deteriorated beyond intolerable level. Example of such type of movement was the movement of Rwandan refugees in Burundi (Haddad, 2004). However, refugees in the acute category may sometimes decide to return home amidst the security challenges if observed the security situation worsens. The pressure to return home may sometimes eventuate from freezing of charity funds/aids upon which the refugee survives (Haddad (2004).

2.2.1.3 Intermediate Movement

There are certain intermediate type of movements embodying the characteristics of both the anticipatory and the acute refugee movements. The anticipatory aspect of it was that, some refugees might find themselves in the anticipatory movement before the deterioration of the security situation of his country as he may have made all the precautionary measures for their stays in the asylum. However, they might turn acute if the crises escalated or as a results of eruption of conflict between the refugees and the local population which will necessitate for his further migration. These patterns of refugee according to Degu (2002) was common among the Jewish refugees of the Second World War, when anticipatory movement which led them to nearby countries, turned into acute

refugee situations as the country of asylum itself came under political and military pressures of Germany.

In spite of the labeled criticisms, the push and pull theory still remained relevant and is use as the tool of analysis for this study. This is because refugees in *Boko Haram* are nevertheless a combination of one or all of the aforementioned kinetics. There are refugees who leave their homes before the devastation of the security situations in around 2010, whereas others managed to escaped at the points of attacks particularly with the intensification of the insurgent attacks in around 2014. There are still others who because of either escalations of the crises in their host countries or for certain other living difficulties in the refugees camps embarked on further fleeing whereas others reverted back to IDPs status for the care of the Nigerian government symbolizing the elements of the intermediate refugee. Guided by these characteristics, kinetic theories have provided an enabling ground for this study.

CHAPTER THREE

3.0 METHODOLOGY AND SOCIO-ECONOMIC FEATURES OF NIGER REPUBLIC

3.1 METHODOLOGY

3.1.1 RESEARCH DESIGN

This research utilized both primary and secondary sources of data. The primary data which was directly collected from the refugees and officials involved in the administration of the camp including staffs of the UNHCR, the officials of the Niger republic government, international and local non-governmental as well as from other members of the host community. Whereas several interviews were conducted with most of the parties involved in the management of the refugees, the researcher also participated in direct observations of the general refugee's situations and their management within the study period (2014-2015). This have been ensures through participating in the camp management and administration through volunteering in educational service in one of the study center established by the UNHCR to provide educational service for the refugees' children between the month of January 2014 and December 2015.

To supplement the primary data, secondary data were also obtained both from published and unpublished articles including UNHCR Publications, official gazettes, Journals, Internet resources etc.

In addition to the daily services of the education, the researcher observed on the various registration processes by all the parties involved including the UNHCR, the Niger government and other participating agencies. It also observed on the various sheltering methods, the provisions of health services, the daily feeding and nutrition as well as the security challenges and their management.

3.1.2 POPULATIONS OF THE STUDY

The populations of this study include all individuals including Nigerian Citizens (refugees) and Nigerian citizens residing in Nigeria (returnee) who as a result of the exacerbation of the crises by the insurgent group *Boko Haram* crossed the frontier of Nigerian State and sought refuge in Niger Republic's Maine Soroa town between the year 2014 and 2015. In this respect, 25,000 people including males adult and children, female adult and children from five communities or local governments in Nigeria are hosted. Below are the distributions of the population distribution of the study population

Table 3.1 POPULATION DISTRIBUTION OF REFUGEES AND RETURNEES IN MAINE SOROA 2014- 2015

S/ N	REFUGEES' LOCAL GOVERNMENT	REFUGEE NUMBER	PERCENTAGE OF TOTAL POPULATION
1	GEIDAM	10750	42
2	YUNUSARI	9250	36
3	DAMATURU	250	1
4	DAMASAK	1250	5
5	ABADAM	1250	5
6	RETURNEES	2250	9
	TOTAL	25,000	100

COMMUNITY ACTION COMMITTEE (2014)

These populations were further distributed base on camp and out of camp settlers. Estimated 3500 people (refugee and returnee) are reportedly camp settlers whereas 21500 are non-camp settlers and are disperses in various parts of the town mostly accommodated by friends and family members. The breakdown of the camp population and their local government areas

Table 3.2 POPULATION DISTRIBUTIONS OF REFUGEES IN CAMP IN MAINE SOROA BASED ON LOCAL GOVERNMENT OF ORIGIN IN NIGERIA

S / N	REFUGEE LOCAL GOVERNMENT	REFUGEES' NUMBER	PERCENTAGE OF CAMP POPULATIONS
1	GEIDAM	1127	32
2	YUNUSARI	1058	30
3	DAMATURU	34	1
4	DAMASAK	851	24
5	ABADAM	239	7
6	RETURNEES	191	6
	TOTAL	3500	100

EXTRACT FROM COMMUNITY ACTION COMMITTEE REGISTER (2014)

3.1.3 SAMPLING TECHNIQUES

To collect the data from the respondents, purposive sampling method from the non-probability scale was used to select the interviewees for the study. Purposive sampling according to Berg (2004) is a non-probability sampling method that involved a deliberate selection of respondents for a particular study based on personal judgment of the researcher on whom he found to be suitable to elicit the necessary information for the study. Cooper & Greenaway (2015) also opined that, a researcher using purposive sampling will only approach individuals who he believes to ascertain the most appropriate information for his study. Cooper & Greenaway's contention was further justified by Fallis (2013) who also opined that, a researcher using a purposive sampling can select his respondents' based on the relevance of the subjects for his study. Berg (2004) in his study further submitted that, purposive sampling is the most suitable instrument for a researcher whose study populations are large and dispersed in large geographical areas.

It was based on the above contentions that, this study adopted the purposive sampling method for its data collections. That since the refugee status are of two

categories (camp and camp), the research approach the camp settlers in which interviews were hold with many of the refugees. Respondents were selects based on place of origin in Nigeria. To guarantee fairness and ensure equal representations of the various localities, proportional sampling was applies in selecting the main respondents. In this case, 10% of the refugees from each local government areas were selects for the study, which were in turns obtained through simple random method. To further ensures equal representation of gender, 40:60 ratios (40% male respondent and 60% female) were applied to determine the gender representation of the study. This conclusion was arrived by the fact that, an approximated 60% of the camp settlers are women. Below is the Distribution of respondent selected for the study.

Table 3.3 DISTRIBUTIONS OF RESPONDENTS BASED ON PLACES OF ORIGIN IN MAINE SOROA REFUGEE CAMP 2014-2015

S / N	REFUGEE LOCAL GOVERNMENT	REFUGEE'S NUMBER	PROPORTION SELECTED (10%)
1	GEIDAM	1127	113
2	YUNUSARI	1058	106
3	DAMATURU	34	03
4	DAMASAK	851	85
5	ABADAM	239	24
6	RETURNEES	191	19
	TOTAL	3500	350

CAC (2015)

As shown on the above table, 350 respondents were selected out of the total refugee population of 3500 resided in the camp between 2014-2015. 113 refugees were selected from Geidam out of the 1127 refugees from the area, 106 from Yunusari, 3 from Damaturu, 85 from Damasak, 24 from Abadam and 19 returnees. These population were further selected based on gender on a ratio of 60 females and 40 males. Below is a distribution of the sample population base on gender.

**Table 3.4 DISTRIBUTIONS OF POPULATION SAMPLING METHOD
BASED ON GENDER IN MAINE SOROA REFUGEE CAMP 2015**

S / N	Local Govt	Population	Proportion of Sample (10%)	Proportion of male (40%)	Proportion of female (60%)
1	Geidam	1127	113	45	68
2	Yunusari	1058	106	42	64
3	Damaturu	34	03	1	2
4	Damasak	851	85	34	51
5	Abadam	239	24	10	14
6	Returnees	191	19	8	11
	Total	3500	350	140	210

As shown in the above table, 140 male and 210 female refugees are selected for the study. The distributions of these are, 45 male and 68 female from Geidam, 42 males and 64 females from Yunusari, 1 male and 2 females from Damaturu, 34 males and 51 females from Damasak, 10 males and 14 females from Abadam and 8 males and 11 females are returnees.

Although, purposive sampling has been utilize in the selection of the out of camp respondents, but not structured on a proportionate method as in the camp respondents, accidental sampling was utilize in the selection of the final respondents. Most of the data on the out of camp were obtained at various locations including aid distribution centers and other public gatherings like market places, religious centers, motor parks etc. Since it is not well structured, determination of the actual sample respondents has been base on the researcher's judgments.

3.1.3 METHOD OF DATA ANALYSIS

In the presentations of the data, it utilized both the quantitative instruments and qualitative tools. In the quantitative aspect, graphical presentations of information were made through percentage distribution of monthly refugee students' enrolment, gender distribution of students and age distributions, budgetary and funding gaps that existed among the donors etc. Such information are presented by the used of pie charts, histograms, bar charts and line graphs. The presentations were further aids by the qualitative interpretations of the information.

3.2 SOCIO-ECONOMIC FEATURES OF THE STUDY AREA

Niger is one of the fifteen Member countries of the Economic Community of West African States (ECOWAS) situated in the Sahel region of the continent with a geographical land mass of 1,267.0km² and a population size of 17.2 million (World Development Report, 2012). Its population was reportedly dispersed in an interval of 14km² distance. Majority of the Niger's populations are disperses in rural areas with predominantly agricultural base occupation. Just like other political history of African, Niger has passes through colonial policy of France. Since gaining independence from France in 1960, the Republic of Niger has been plagued with recurrent political instability and slow economic development.

In its political scene, it first experiences a single-party democracy which later metamorphosed into a prolonged period of military-rule began with a coup d'état in 1974. According to AriseNews (2014/01/22), as one of the largest producer of uranium straddling in the Sahel, Niger is nevertheless one of the poorest countries in the world (World Development Report, 2012). By its recurrent poor harvest and spillover of conflicts from Libya, Mali and now Nigeria, the years coming can be difficult periods for Niger (AriseNews 22/01/2015). While the

country is mangling with a political upheavals, it was not until in the year 1989 that political liberalization and reform re-appeared in the country. These political developments were however truncates with ethnic rebellion of the Tuareg people that occurred in 1990 for factors attributed mainly for long-term marginalization and neglects. As part of political revival, civilian rule was reintroduce in 1991 with a new democratic constitution.

However political paralysis re-witnessed in 1996 that further precipitated into another long period of military dictatorship. For most of the remainders of Niger's political history just like other countries of Africa, counter military coups were evident. The most recent coup in 2010 that ousted the government of President Mamadu Tandja after a purported effort in elongation of tenure through constitutional amendment re-truncated the democratic process again until democracy was restores through ECOWAS mediation. Renewed hostilities also occurred in relation to the Tuareg in 2007 primarily on accounts of failed promises made in 1995; a relatively new source of instabilities has been witness by the Republic particularly with the growth of Islamic extremist group's activities. These were evident in the armed aggressions and violence with the most recent string of it occurred in 2013. Although concerted effort exists among United States, France and other regional bodies in assisting the Republic to combat the menace of terrorist activities, the country is nevertheless experiencing waves of darling attacks from these groups (Movement for Oneness of Jihad in Africa [MUJAO], Al-Qaeda in the Islamic Maghreb [AQIM], Boko Haram, etc.

Niger Government amidst her economic difficulty diverts precious resources meant for infrastructural development to the containments of certain security crises and resettlement of refugees and internally displaced persons. This led to a neglect of promised reforms to reduce the social and economic upheavals of the

vast majority. A prolonged and perennial drought culminated into poor harvest, which further deepened the burden of the government.

Founded by her fast growing population and economic downturns, according to Owutu (2014) civil unrest and light weapon banditry is prevalent. These prevailing security situations nevertheless ignited a flight of foreign investment over the years. To bridge the gap, the Niger Government always invites foreign donors for successful project implementations and hence re-weakens the sovereignty of the State.

On its diplomatic relations, Niger is an active and growing member of numerous international organizations within and outside Africa. It recently joined the United Nations World Tourism Organization (AriseNews 22/01/2015). Niger is also an active member in United Nations Peacekeeping Operations in its immediate neighborhood. It has participated in peace operations in Liberia, the Democratic Republic of Congo, Cote d'Ivoire, and now in Mali. Niger has also signed a bilateral security agreement with Mauritania in an effort to containing the spread of radical Islamic movement and impeding the activity of terrorist organizations.

In the economic scene, Niger is also member of a variety of economic and multipurpose international organizations. More specific is a member of the regional Economic Community of West Africa (ECOWAS), the African Union [AU], World Trade Organization [WTO], Economic and Monetary Union of Africa [UEMOA], etc.

The discoveries of crude oil in 2012 according to AriseNews (22/01/2015) have recorded Niger as one of the exporter of crude to the international markets. It is also the world's second producer of uranium by 2015. The Nigerien government has recently started numerous reforms to diversify the economy that is predominantly agricultural based contributing about 80% of the GDP. The

diversifications was necessitated by the contemporary environmental shocks, ignited mostly by the so-called global climatic factors. Niger is however ranked 186 on the list of Human Development Index (HDI) (World Development Report, 2012), an index which undoubtedly scored Niger as one among the comities of impoverished countries of the sub-Saharan Africa.

Estimates by the Millennium Development Goal (2013) summited that over 60% of Niger's population lives below the international poverty line of one US Dollar (\$1.00) a day whereas 85% lives below the two US Dollar a day. A Millennium Development Goals (MDGs) report indicated that Niger is unlikely to meet most of the MDGs by 2015. The chronic poverty and the devastating standard of living remained the major factor of instability just like in other countries of Africa. According to Owutu (2014), the persistent progress recorded since the discovery of oil in 2012 might likely deteriorate due to some internal shocks as exemplified in other countries.

Infrastructural development, which was a major impediment for development in most countries of Sub-Saharan Africa, Niger is nevertheless not exceptional. Access to potable water is a mirage. The perennial drought further deepens the countries dream of the MDGs. A 2013 report by MDGs indicated a success in a relative urban water supply, only 39% of the rural populations have so far reported to ascertain water supply (MDG 2013). Niger has an extremely high infant mortality rate of 79.2 deaths per 1000 live births. This rate has decreased to 62.8 in 2012 (MDG 2013). Niger has a high maternal mortality rate of 590 deaths per 100,000 live births in 2010 (MDG 2013).

Since 2009, the border monitoring activities in Niger Republic witnessed an uninterrupted flow of refugees and returnees crossing majorly from Nigeria. The displacement pattern was largely not precautionary, but it is a direct response to the security situations in the bordering Nigeria's regional states of Borno, Yobe and Adamawa devastated by the insurgent *Boko Haram*. Although, majority of

refugees in Nigeria are concentrated in Diffa region and are predominantly from the border close to Lake Chad Basin; it was observe that most of them reached in a vulnerable conditions that necessitated for both international and local assistance for their survival.

CHAPTER FOUR

4.0 ROLE OF UNHCR IN THE MANAGEMENT OF REFUGEES' IN MAINE SOROA, REPUBLIC OF NIGER

4.1 REASONS FOR REFUGEE STATUS

There are a myriad of reasons observed that have mandated the victims of the insurgent *Boko Haram* in Nigeria's north to surrender themselves to the protections of another country than to seek refuge in other parts of the country as Internally Displaced Persons (IDPs). Although, proximity was seen as the major factor in the choice of decisions; as most of the areas under the siege of the insurgency were at the border areas of the country (Niger, Chad and Cameroun) as the conspiracy theory of perception of the crises was laid as a major factor. Most of the victims perceived that the crises was politically motivated and hence has been believe to be continue unabated. With this perception in mind, many of the victims expressed doubt in the security guarantee of the remaining parts of the country. This was even more justified as the territorial conquest of the group expanded in an accelerated manner.

Guided by the above insinuation, many of the refugees remained skeptic of the outreach of the crises to other areas of the Nigerian State. Such assumption was also supports by Montclos (2014) who assert that conspiracy theories have found credence in the opacity of the situation exacerbated by *Boko Haram*. Many believed that the insurgency is a Christian ploy to justify a religious partition of the country, whereas others assumed it as a ploy by the United States and its western allies because of the oil dispositions in the Lake Basin region.

While these ones are leveled as ground for their crossing border, many others perceived the crisis as deliberate attempt by the then Federal Government to destabilize the region for the then coming election in 2015, so they perceived the crises as politically motivated and will persist for a long time. As posited by one of refugee "I am not going back even if they re-conquer our town from the Boko

Haram sect until the 2015 general election has been completed.” Another respondent also posited that, “the whole thing is about politics. You know the main reason why Yobe and Borno that are worst affected is because we remained in the opposition and that is why the government is not interested in fighting the Boko Haram just to destabilize the region for the forthcoming election. So we can only go back if the election is completed.”

Added to the above assumption was the poor weaponry of the Nigeria’s army. There was a widespread complaint on daily basis by the Nigerian armies at the war front of the ill/poor structure of their armoury to confront the ultra-modern arms of the group; an avenue used always justify their fleeing to enable the sects took over most of the towns and villages. This claimed by the military further deepens the suspicion on the government’s willingness to contain the crises in the shortest possible time and hence contributed for the border crossing into Niger. Most decision in this direction was centers on the political and military might of the Nigeria’s State. That with the country’s economic strength as the sixth largest producer of global crude oil as well as the largest economy of the continent with a records of successful military achievements/operations in several peace keeping missions, the inability of the country to contain the crises strengthened the suspicion that the government has a direct interest in the war. This therefore derailed the hope of security guarantee if one surrendered himself as IDP. These poor military formations to contain the insurgents have once summited by Shettima, the Borno State Governor in words “that the *Boko Haram* members are more armed and highly motivated than the Nigerian army.” Although, the central government has responded swiftly to the governor’s statement as an incursion, the unabated push by the sect in the conquering of towns derived further suspicion in the integrity of the government in its fight against the insurgency.

Guided by the above and the behavioral norm of the military fleeing before attacks and leaving the civilian for God's mercy, many prepared to be refugees than to be IDPs.

More suspicion on the readiness of the government in any more protections emanated from the fact that notice were tendered by the sect for the impending attacks, resolute measures were not ensured to prevent it. For example, in the towns of Malam Fatori, Damasak and Geidam among others, signal has been receive days before the attacks but no counteractive measures has been taken to obstruct it. In Geidam town for example, after the notice of the impending attack, many of the fleeing civilians were force back by the military through guaranteeing them of absolute protections. However, it happened that the military have fled before the civilians during the attack on 21/12/2015.

The fact that Boko Haram issue notice before attack was also reported by Amnesty International [AI] (2015) that, "in most of the towns attacked by the insurgent *Boko Haram*, there were warning days before the attacks." It further stated that the military often urged the residents to calm down for reinforcement have been guaranteed by top military institutions, but up to the time of the attacks, such proclamations cannot be guaranteed. These scenarios further drop doubt on the readiness of the government to contain the crises and resorting to refugee status was found as the last resorts.

The suspicion on the non-readiness of the central government or else incapacity of the military to contain the insurgent situations was not only attributed to the general public, but the state governments of the devastated states have also appreciated the incompetency of the military on the war front. This was more pronounces through their supplementary effort in the formation of local security organizations tagged "Civilian Joint Task Force" (Civilian JTF) and a vigilante group (Sarkin Baka) to work hand in hand with the state security apparatus. This

death in confidence was one of the major factors that demotivate the desire of many in choosing to be IDP.

Another factor that also appeared more common among many of the refugee was the psychological satisfaction to be outside Nigerian territory. Although, Boko Haram has severely traumatized the victims of its campaigns, it was however observed that, many of the victims consider the psychological rest of not identifying with the Nigerian state and so prepare to be refugee than IDP. The main reason for such a decision was the fact that, before the escalation of the crises into Niger Republic in around the year 2015, many of the refugees believed that the insurgency is mainly a Nigerian affair and its operation was limited to the territorial boundary of Nigeria's state. That it concerned about Nigeria was mainly for a revenge of the extra-judicial killings of its leader and members in 2009 by the Nigerian Police in Maiduguri. So for many of the refugees, it was believed that anyone who succeeded in crossing the frontier of the Nigeria border was free from further attack. Guided by this insinuation, many of the victims resorted to refugee than IDP; a decision that bestowed them enough psychological rest in living. Such type assumptions were further justified by the modus operandi of the group that featured much on the respect of State territorial integrity. For example, in many of the areas conquered, in spite of the fact that they share immediate national boundary with their neighbors, no efforts were ensured by the group to cross the borders Nigeria's neighbour countries either for territorial conquests or for any follow-up attacks. In many of the communities, people feel safe once succeeded in crossing into Niger territory at whatever length. This territorial respect of the sect developed insinuation in the minds of the prospective refugees that the fight is majorly with Nigeria's State and hence seeing Niger as a safe haven as far as the crises are concerned. These assumptions until the recent escalations of the crises serve as another force that dragged the victims to seek refuge in Niger territory than to be IDPs.

4.2 UNHCR AND THE MANAGEMENT OF REFUGEES IN MAINE SOROA (2014-2015)

UNHCR is one of the humanitarian agencies and in fact the lead agency in the management of refugees in the Republic of Niger. The organization works closely with Niger’s Special Commission for Refugee (National Eligibility Commission of Niger) a body specially established with the responsibility of determining the status and countries of refugees in the country. However, in addition to the aforementioned bodies, several other donors have also joint particularly with the rapid escalations of crises or in what to be called refugee bombshell. Wide range of other partners including other United Nations agencies, Non-Governmental Organizations (NGOs) and Civil Society Organizations (CSOs) have ultimately joint. Below is a list of the major donors that participated in the humanitarian works in the year 2014-2015.

TABLE 4.1 UNHCR PARTNERS IN NIGER REPUBLIC FOR THE MANAGEMENT OF REFUGEES IN MAINE SOROA (2014-2015)

Bodies	Name of Agency/Acronyms
Government Agencies	National Eligibility Commission, The Social Safety Net Unit, Regional Government of Maine-Soroa
NGOs	ACTED, Caritas, CARE, COOPI, IEDA Relief, International Rescue Committee, The Luxembourg Red Cross, the Red Cross Society of Niger, Qatar Red Crescent Society, Save the Children, Search for Common Ground etc.
Others	FAO, ICRC, IOM, OCHA, UNDP, UNFPA, UNICEF, UNHAS, WFP, WHO

Source; field data

4.2.1 REFUGEES' REGISTRATION

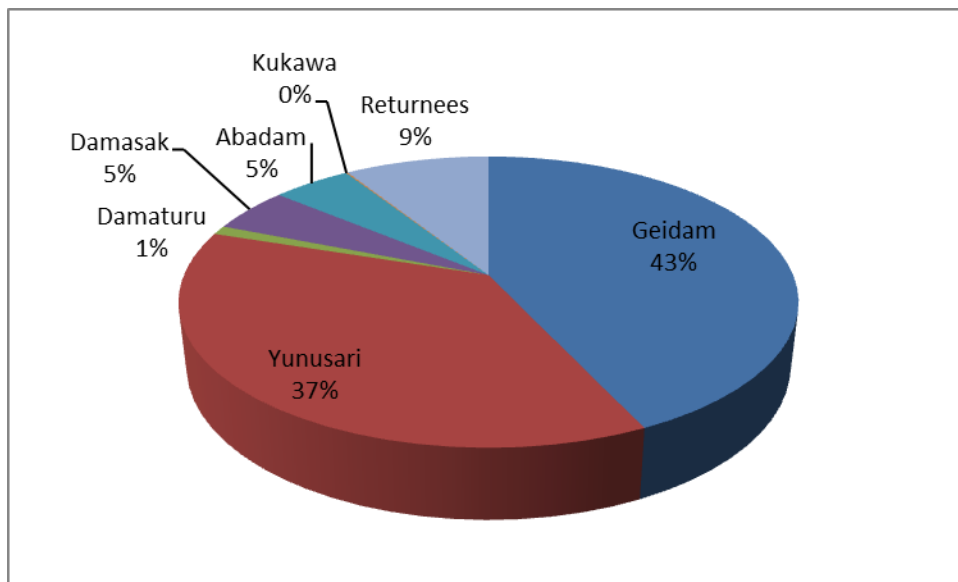
Registrations of refugees has been done by the Niger Government through its agency of National Eligibility Commission of Niger and UNHCR based on the category of refugee (RF) and returnees (RT). Although, intensified effort existed in guaranteeing effective registrations, the en masse arrivals as a result of the increases in the frequency of attacks (see appendix one for the frequency) starting particularly in the mid of the year 2014 hindered the registration process and hence hampered the refugee register. Effort made for make-up registrations through house-to-house campaigns for some of the refugees that were host by their relatives proved abortive. It was however observe that most of the refugees boycotted the process for factors largely attributed for fear of disclosing their identities and residences, although, such scenarios were more inclined to the elite class. Other factors well observed for boycotting the registration processes were the fear of possible legislations that may stand to discriminate refugees and nationals hindered the make-up registration process by the commissions.

On the account of total registration or number of refugees in Maine Soroa town, information differs from one body to the other as official records are majorly occupies by camp settlers together with the list of few refugees that reported for aid collection. However, anecdotal estimates have averaged the size of refugees in Maine Soroa town at about 25000 people (CAC, 2015) as at 30th December, 2014. Many of these refugees as earlier stated were disperses in the town and mostly accommodated by friends and families. Although, the number refugees that were under the direct cares of the commission in the camp are 3500 populations (CAC, 2015). Three transit camps existed for the settlements (prison camp, poultry house and physically challenge peoples site). The three camps in the Maine Soroa town have reportedly accommodated 3500 refugees. It was also observe that, the fact that the refugee crises emanated together with the insurgency at around 2011, a formal camp does not exist in Maine Soroa town

until the year 2014. The nonexistence of any camp notwithstanding, UNHCR has been embarking on a numerous out of camp assistance independently or in collaboration with its participating agencies.

In most of the camps, majority of the refugees are women and children. Likewise, identifications of refugees' families and their settlements were mainly on the proximities to their previous places in their home country. For most of the refugees from the towns of Malam Fatori, Guzamala and Baga, they are concentrated more in Bosso and Diffa transits, those from Damasak community were settle in Gagamari town later relocated to Sayam Forage; whereas refugees in Maine Soroa town are predominantly from Geidam, Yunusari and Damaturu communities. It was also found that, compositions of refugees in the Maine Soroa town are largely from six communities as shown in the pie chart below plus returnees.

FIGURE 4.1 PERCENTAGE DISTRIBUTIONS OF REFUGEES IN MAINE SOROA TOWN, NIGER REPUBLIC (2014-2015)



Source; Community Action Committee (2015)

As shown from the above chart, there are 25,000 refugees in Maine Soroa town (3500 in camp and 21500 out of camp) from two States of Borno and Yobe as well as returnees. Out of these, 81% are from Yobe (43% from Geidam, 37% from Yunusari and 1% from Damaturu Local Government Areas), 10% are from Borno (5% each from Abadam and Damasak and least than 1% from Kukawa Local Government Areas), 9% are returnees (Niger citizens residing in Nigeria).

Based on these distributions, it is ultimately clear that proximity to place of earlier residence, coupled with the expectations of timely return upon stabilizations of the security situations were found to be the determining factor in the choice of settlements.

4.2.2 REFUGEES' FOOD AID IN MAINE SOROA

Provisions of foods for refugees were ensured through UNHCR, Niger Government in conjunction with World Food Programme (WFP). Two criteria/processes of food aid existed; the provision of food at the camps and those outside the camps. In the camps, food was provided through the direct coordination of the committee of the camp management comprising of the officials of the National Eligibility Commission of Niger, UNHCR and WFP. In addition to the camp management, the out of camp refugees' were also supported as a supplement to the daily food needs. 3500 refugees have been estimated to be receiving the direct feeding in the camps within the period of this report.

In addition to the aid by the UNHCR and WFP, some organized groups and individuals have also been rendering assistance to supplement the food aid of the UNHCR. For example, on 26th December, 2014, the Niger government as a matter of emergency provided 23 tonnes of grains while another 80 tonnes was supplied by the wife of the President including 50 cartons of oils, cloths and mats. Yobe State Government with the visit of the Governor on 5th January, 2015 also supplied an approximated 800 tonnes of grains. Others are the contributions

of some civil societies. Save the Children has also been engaged in the management of such cases of malnutrition through the provision of nutritional supplements to children and pregnant women. These activities were ensured together with United Nations International Children Emergency Fund (UNICEF), International Red Cross Committee [ICRC] etc; the distributions of these nutritional supplements was nevertheless ignited by growing levels of malnutrition among the refugees' children. The incidence of the malnutrition was also rooted from the fact that the food required was inadequate and supplementary sources were absolutely lacking. This scenario was largely grounded from the fact that, the Diffa region was one of the areas reported to have a high incidence of malnourishments even within the Niger Republic. According to a finding by an independent nutritional survey in Organization for the Coordination of Humanitarian Aid [CHA] (2015), that global acute malnutrition rate of Diffa region is estimated to 13.8 per cent of the country's population. The magnitudes of these incidences was reported by UNICEF (2015) that, between November 2014 and February 2015, a total number of 1,322 children have been reported to receive treatment of severe acute malnutrition (SAM) in the three communities of Diffa, Ngegime and Maine Soroa through the intervention of UNICEF (UNICEF 2015).

As the cases of malnutrition continued to be observed among many of the displaced children, several donors also devoted attention to this aspect. Save the Children supplied about 1,400 Plumpy Nut (an emergency nutritional meal serve to children) boxes to the Integrated Health Centres in Maine Soroa town to supplement the nutritional value of displaced children. Distributions of these items were ensured at the Maine Soroa health clinics.

In addition to the direct treatment through the designated health facilities, UNICEF also embarked on regular check-ups of nutritional value through its surveillance team to checkmate for proper compliance. Effort to re-guarantee

this, on 19 January 2015, Save the Children with support of European Union [EU] screened malnourished children in many health centers in the Maine Soroa district. To ensure free and fast accesses to the beneficiaries, 48 severe acute nutritional recuperation centres (*centre de récupération nutritionnelle aigu et sévère* [CRENAS]) and 94 moderate nutritional recovery mobile centers (*centres de récupération nutritionnelle ambulatoires* [CRENAM]) together with three intensive nutritional recovery centres (*centre de récupération nutritionnelle intensive* [CRENI]) were established.

International Red Cross Committee (ICRC) in collaboration with WFP also supported malnourished children, pregnant women and breastfeeding women where they distributed about 7,200kg of Super-cereal Plus and 19,000kg of Super-cereal to an approximated 2000 children comprising under five years old children, pregnant and breastfeeding women. Distribution was done throughout the Maine Soroa district.

WFP and Care International assisted over 20,500 people, (refugees, returnees and the host communities) majorly women and children with food and nutritional inputs weighing 37.27 tonnes in the Diffa region. Through its goal of ensuring food security for the refugees, returnees and host communities, the International Rescue Committee [IRC] embarked on a voucher payment in the sum of 32,500CFA (\$53.87), beneficiaries are selected through random sampling method. This voucher is to enable refugees to procure additional food items (millet, rice, oil, corn). Other assistances were from religious organizations, National Emergency Management Agency [NEMA] etc. In its visit on the 27th January, 2015 the Federal Government of Nigeria through its National Emergency Management Agency also delivered 540 tonnes of relief items to Nigerian refugees taking shelter at different locations in the Diffa Region of Niger Republic.

Although, despite the concerted effort in the provision of these food and water by the donor agencies, complaints of inadequacy and basic malnutrition become the orders of the day. However, this is not surprising because Niger Republic according to UNHCR (2015a) has been witnessing decades of droughts since the year 2010, which rendered food productions less and hence ignited hunger crises for years. The rapid increase in the refugee crises mounted pressure on the already stressed commodity stocks of the country. The gravity of food shortages in Niger republic have been succinctly captured by International Rescue Committee (2015:13), in words “Niger is regularly gutted by disasters including drought, floods, cholera and locust swarms outbreak etc. As a result, over half of the population suffers from food shortages over the years.”

Added to the persistent scarcity of food, access to potable drinking water is also a mirage. Founded by the perennial drought, supply of potable water in Niger Republic also remained an issue of international concern. In the Diffa region, an estimated 75% of its population relies on Kamadugu Yobe and Lake Chad for their water needs. The influx of the refugees and the security challenges of most of the riverine areas further deepened the crises of the regions. As consequences of these scarcities, people resorted to some unhygienic supplies of water. Although, no report of water borne diseases have been officially reported in Maine Soroa, reports have since been made on the outbreaks of such incidences in other camps of the region. For instance, in Gagamari, about 120 cases of cholera with reportedly eight live mortalities were conspicuously recorded (IRC, 2015).

In their effort to ameliorate the water shortage in the refugees’ camps, UNHCR supplied water to the designated camps and transit camps with the use of water tank from Diffa (the capital city) located about 70km on a daily basis. Based on this arrangement, water scarcities in the camps was minimized to a considerable level but scarcity increased as the refugee size increases with new arrivals

particularly with the emergence of IDPs because of escalation of crises into the Niger territory. It was also believed that, shortage of water have been cause by the changed in atmospheric conditions particularly beginning in around early March 2015, which resulted for the demand of more water for livelihood. However, while water was supplies on a daily basis, inadequate preservation equipment made it difficult for proper utilizations. Observed in this situation, Save the Children distributed about 2,000 water kits to cover the basic needs of 2,000 families in Maine Soroa camps. Distribution was ensures at the Myer's Office (Local Government Secretariat).

However, despite these concerted efforts in the provision of food, a complaint of shortage was apparent. According to an independent online media outlet reutersonline.com (25/02/2015) submitted that, "in most of the camps in Diffa region, there were lack of accesses to basic health care services and lack of food as well as clean water" Food aid is often not enough to meet the basic needs of the refugees whereas alternative source is entirely lacking. Founded by these circumstances, reports of malnutrition and dysentery occupied the center of daily medical reports.

4.2.3 REFUGEES' SHELTER AND ACCOMMODATION

UNHCR in collaboration with the Niger Government has distributed Emergency relief materials to Nigerian refugees and Niger returnees in many parts of Diffa regions. This is because with the en masse arrival beginning in the mid of 2014, provisions of shelter or shelter equipment become an issue of urgent considerations. Since 2014, UNHCR in collaboration with the Niger Government has distributed mats, blankets, jerry cans, kitchenware among other things. Distribution was done at the point of registration on first come first serve strategy. Strengthening the effort in ensuring shelter, on 16 March, 2015 UNHCR through collaboration with International Organization on Migration [IOM] launched another set of distributions of 2,200 emergency shelter kits to

refugees. They also assisted in the construction of 200 tents in Maine Soroa town and were largely benefited by peoples with disabilities. In addition to this, UNICEF also assisted in the distribution of 3000 shelters kits for households in Maine Soroa town and its district (distribution is on-going as at the time of this report in December 2015).

4.2.4 REFUGEES' HEALTH AND SANITATION

Health service is based on two categories (camp and out camp basis). While free medical service was given in the transit camps through the intervention of several donors, the out of camp refugees are arranged to receive medical treatment in the government designated health centers freely. However, as at February 2015, only children under the age of five and pregnant women were considered for free medical services.

Acute shortages of health personnel are also observed as part of the major problem in most of the health centers. For instance, beginning the first week of the year 2015 down to April 2015, all the health centers remained closed within the Maine Soroa mainly because of the escalation of the insurgent activities into the Maine Soroa region. With the increase and unabated conventional and suicide attacks, the government of the Niger republic ordered for the closure of all public establishments which culminated into the redeployments of health personnel to other areas of the country. However, with the formal announcement of resumption of services in 14 April 2015, up to the period of writing this report in December 2015, only skeletal service was guaranteed in the both the town and the refugee camps.

It was observed that, with the continuous suspensions of the health care institutions throughout the Diffa region because of the intensifications of crises, Save the Children (one of the bodies that actively participated in the humanitarian services in the region) recruited and deploys 104 health personnel

to renders health services for the refugees. Among them includes; 82 medical, nurses and midwives, 10 nutritional health assistance as well as 12 hygienic health staffs to Maine Soroa town to aid the health care service of the people starting from the month of February 2015 up to the time of compiling this report; most of the staffs are employed on voluntary services.

Private individuals and governments of Yobe and Borno States have also provided drugs to the health centers in Maine Soroa town to supplement the effort of the UNHCR and other participating bodies.

In spite of these interventions, crises of health care services were evident. One of the major reasons observed for this shortage is the congestions as well as lack of well-defined criteria in the drug administration. Founded by these challenges, the National Eligibility Committee revised the earlier policy of drug free for refugees to paid services.

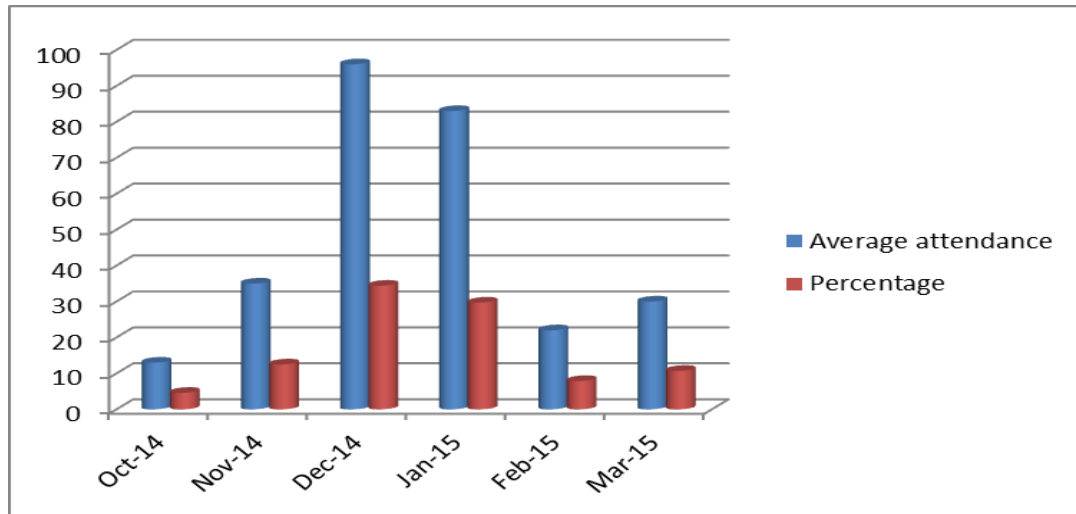
In addition to curative health services which were estimated to have benefited 6,962 people (refugees, returnees and IDPs) in Maine Soroa town through the designated health centers and the mobile clinics (Myer's Record), preventive services were also rendered. UNICEF rendered a preventive health service in collaboration with Save the Children through vaccinating displaced children against measles between 28 December and 3 January 2015. This is part of the many efforts to minimize the incidence of the outbreak of measles in the earlier month of January 2015. To prevent further spreads, in the early month of March 2015, the health district of Maine Soroa with support from Save the Children rendered another vaccination to refugees, returnees, IDPs and host community both in the town and the remote areas of the district.

4.2.5 REFUGEES' EDUCATION

In an effort to ensure displaced children to continue with their education, UNHCR in partner with Cooperazione Internazionale (COOPI) established a secondary school on distance learning basis to enable children continue with their education. To actualize the successes of the programme, UNHCR in partnership with COOPI provided classrooms blocks, trained teachers through workshops and seminars and provided instructional materials for the teachers and students. The school was also uses as an avenue for peace building initiative programmes introduced by one nongovernmental organization Search for Common Ground (SCG).

The Maine Soroa center was establishes in February 2014, English was uses as a medium of communication. This was in contrast to the provisions for the enrollment of primary school pupils into the various primary schools across the Maine Soroa town but the medium of communication together with the curriculum remained in French. As a matter of urgency, the distance learning (study center) operated at a temporary site as the construction of permanent site is almost about 60% completion in Maine Soroa as at the time of writing this research. The school is composed of students from the main refugee areas, returnees and children from the host community. Percentage enrolment of students varies throughout the session. The highest enrolment was records between the months of December 2014 and January 2015. Below is a bar chart showing the average monthly attendance of students in Maine Soroa town Study Center.

FIGURE 4.2 PERCENTAGE DISTRIBUTIONS OF MONTHLY STUDENT ENROLLMENT IN MAINE SOROA STUDY CENTER



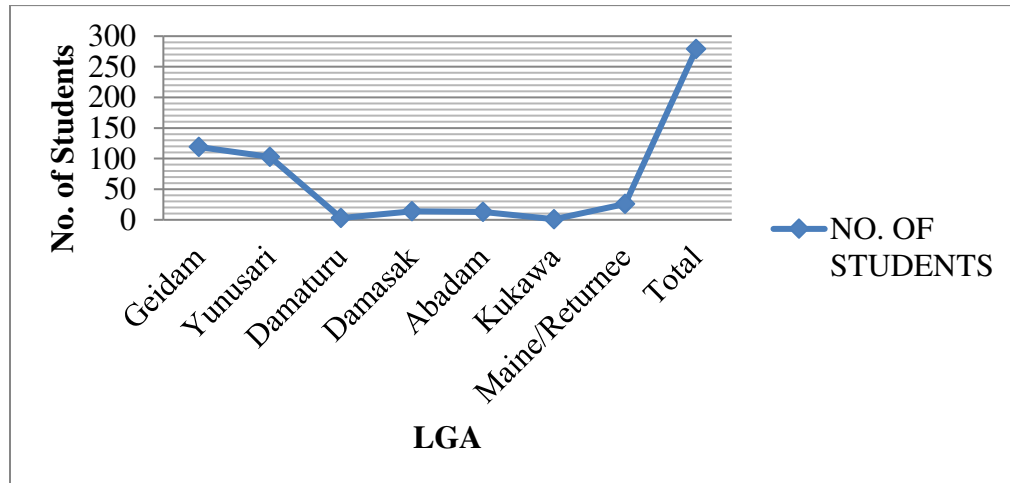
Source: Student Register

The Study Center in Maine Soroa started in the month of October 2014 with student population of 13 students, which rose to 279 as at the time of conducting this research. The highest entry was recorded in the month of December 2014 when 96 (34% of total enrollment) was recorded. This was followed with the month of January 2015 in which 83 students (30% of total enrollment) was recorded. In the month of November 2014, 35 students (12%) was also recorded. Others are in March 2015 with 30 students (11%) and February 2015 with 22 (8%% of the total students enrollment) were recorded.

From the above chart, it would be observes that the highest enrolments was recorded between the months of November 2014 and January 2015. This was also not surprising because it is the time when the Nigeria’s northeast was experiencing waves of attacks from the insurgent group. This explained that the higher the refugees, the higher the enrollment of students in the center. Composition of students’ size was also base on proximity of place of origins.

Below is a line graph showing the distribution of students based on place of origins.

FIGURE 4.3 DISTRIBUTIONS OF STUDENTS BASED ON LOCAL GOVERNMENT AREAS OF ORIGIN IN NIGERIA



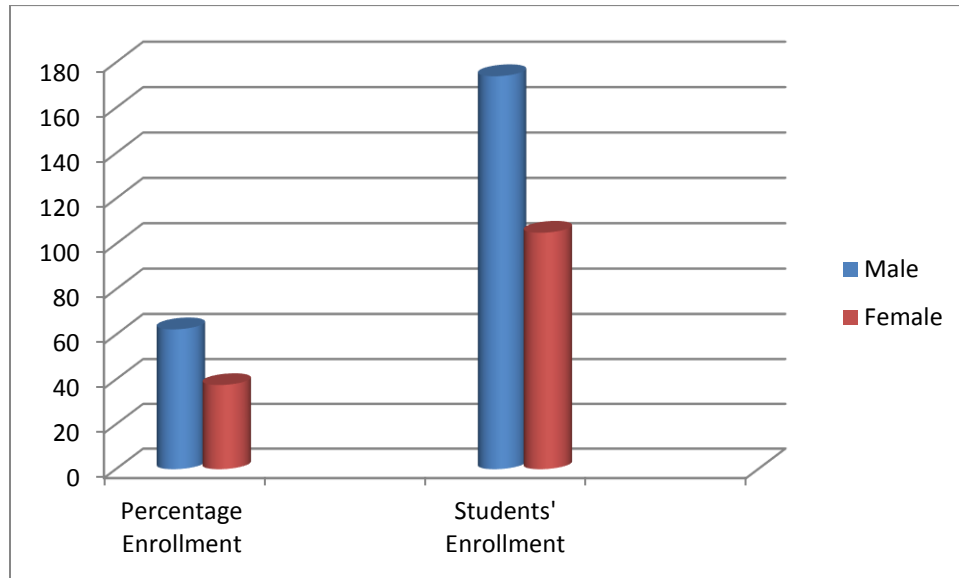
Source: Student Register

As shown in the above line graph, the compositions of students in the study center based on their places or local governments of origin, Geidam Local Government of Yobe State has the largest number of students recording 119 (42.6%) of the total enrollment of 279 students. It was followed by Yunusari Local Government with 103 students or 36.9%, whereas Mobbar (Damasak) Local Government has 14 students or 5.0% of the total students. Abadam Local Government has 13 students (4.7%), Damaturu Local Government has 3 students (1.2%) while the least was Kukawa Local Government with only one student (0.3%) of the total enrollment. There are also returnees' students of 26 students or 9.3%.

There are also higher male students than female in the center whereas the populations of female refugees are higher than that of the male refugees during

this study. Below is a bar chart showing the percentage distribution of students based on gender in the Maine Soroa Study Center.

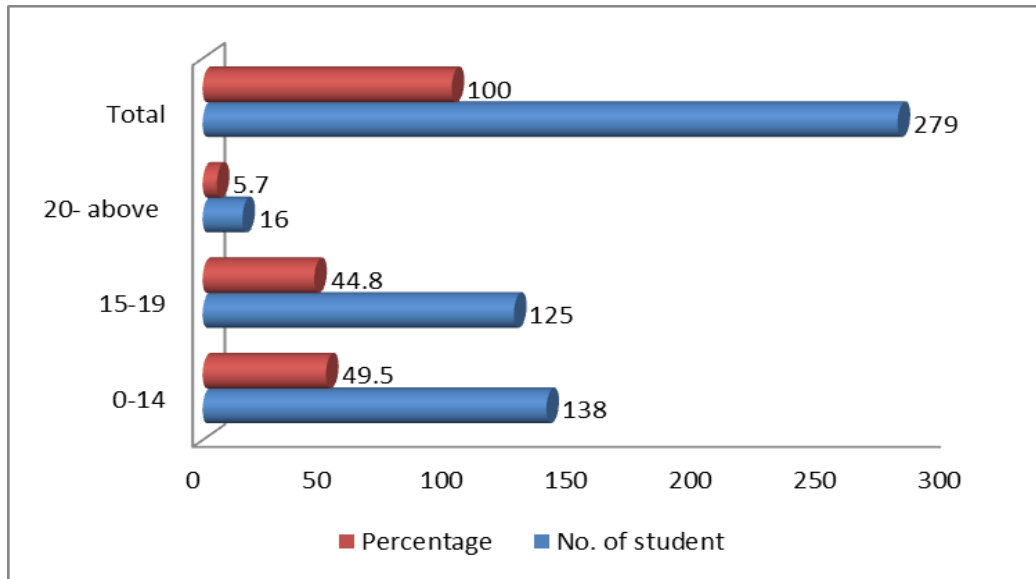
FIGURE 4.4 DISTRIBUTIONS OF STUDENTS BY GENDER IN THE STUDY CENTER



Source: Student Register

The school is composed of 279 students in six sets of classrooms (JSSI to SSIII). Out of these, 174 (62%) are males whereas 105 (37.4%) are females. Some of the major reasons observed for the low turnout of the female students were largely on security threats and distance to the center. There were also many children than adult in the school; scenario that justified the fact that most of the refugees is women and children. Below are the distributions of students based on age.

FIGURE 4.5 DISTRIBUTIONS OF STUDENTS BY AGE



Source: Student Register

From the above chart, it was also observe that, there are more students aging 14 years old and below figuring 138 or 49.5% of the entire students. Those that are at the class interval of 15-19 years are 128 (44.8%). Whereas those that are above the age of 20 has the lowest number figuring 16 or 5.2% of the total students of 279.

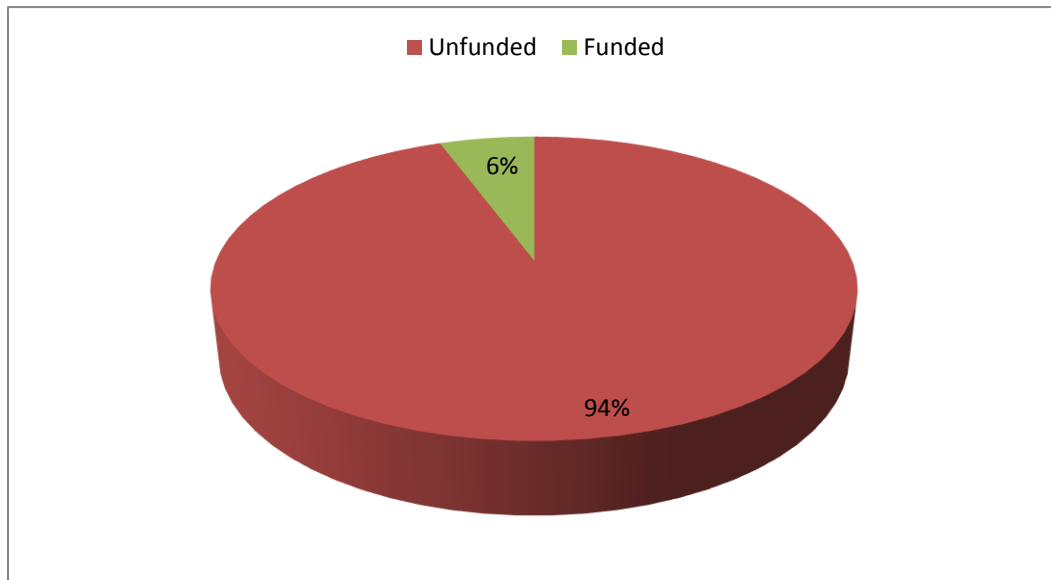
Since its inception, the distance learning center remained opened unless between January and February 2015 when all the government institutions were ordered to close as a result of the escalation of the insurgent activities into the Niger territory with a deadly attacks on Diffa regions. However, the school resumed after the security situations was observe to have subsided in the first week of February 2015. This period experienced a slow turnover of teachers and students.

4.3 UNHCR'S CONSTRAINTS IN REFUGEES MANAGEMENT IN MAINE SOROA

One of the major challenges of the UNHCR in the management of refugees was the financial insufficiency to guarantee efficient services. It was observed that huge budgetary deficits existed between the target projects and financial availability to contain them. Most of the shortages emanated from the non-fulfillment of financial quarter by Member States. For instance, in the Diffa region, a budget of \$34,072,394 million was estimated by UNHCR as financial requirements to ensure the humanitarian services of 50,000 refugees for the year 2014 (Nigerien Regional Refugee Response Plan [NRRRP], 2014), but up to the end of the year 2014, only 34% (\$1,1584,614) of the fund was reported to have been realized. The population of refugees which was projected at 50,000 in 2014 (UNHCR, 2014 & UNICEF, 2015) was nevertheless rises to 96,532 people (63711 refugees, 32821 returnees) enabling a surplus population of about 46532 populations. Founded by this deficit and the growing size of the refugees, services rendered by the commission remained skeletal and less impressive for many of the refugees and their observers.

The problem of financial inadequacies to cater for the urgent humanitarian need of the refugees was also acknowledged by the Niger's government. This was particularly pronounced in around the mid of the year 2014 when the country was experiencing an untimely arrivals of the refugees from Nigeria at one side, and the persistent and untimely attacks by the insurgent group within her territory. As a form of formal declaration for the humanitarian situation, the Nigerien Government went ahead and publicly declared its inability to contain the needs of the growing refugees' size and hence called for international assistance for management. Since then, the number of donor agencies that strived in the service witnessed a dramatic increased. Below is a pie chart showing the funding gap that existed in the 2014 budget of UNHCR in Niger Republic.

FIGURE 4.6 UNHCR BUDGET FOR THE MANAGEMENT OF REFUGEES IN DIFFA REGION 2014



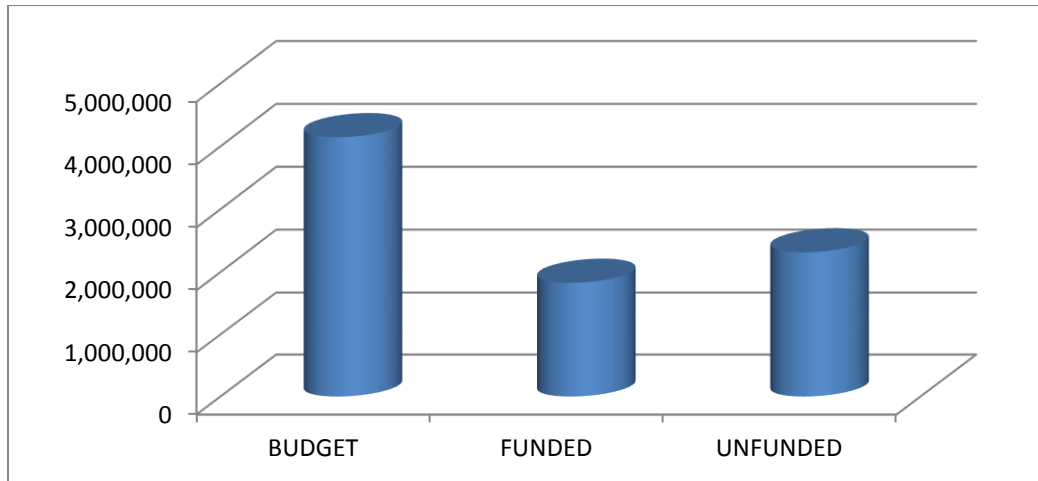
Source: UNHCR (2015)

Presented in the above chart, only six (6%) percent of the UNHCR's financial requirement to ensure its humanitarian assistance were met. Ninety-four (94%) percent were not ascertained. This huge gap according to the commission has drastically undermined its services. In addition to the UNHCR financial gap, UNICEF has also appropriated a sum of \$4145000 million for its financial requirements to contain the refugees in Niger Republic in the year 2014; it has however, been reported that only \$1830000 million was reported to have been realized representing a budgetary deficit of about \$2135000 (UNHCR, 2015).

Other body that has encountered huge budgetary gap in the administration of its aid service was United Nations International Children Emergency Fund [UNICEF]. UNICEF appropriated to expend a sum of \$4145000:00 for its humanitarian exercise in Diffa region to cushion the pains of *Boko Haram* refugees, but up to the end of the year 2014, only 44% (\$1830000) of the budget

were reported to have been realized (UNICEF, 2015). The breakdown of the UNICEF’s funding and budget deficit is presented in the chart below;

FIGURE 4.7.1 UNICEF BUDGET AND FUNDING GAPS FOR THE MANAGEMENT OF REFUGEES IN DIFFA REGION 2014 (Million \$)

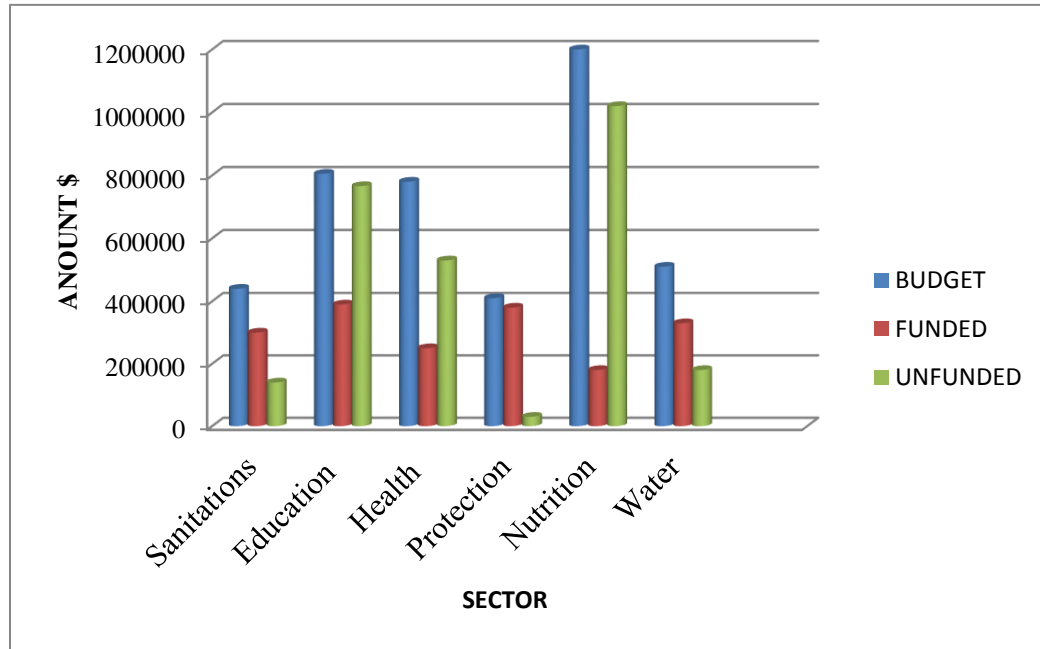


Source: UNICEF (2015)

To fasten and facilitate the exercises, budget were further breakdown down into several sector with each sector allocated with the required fund based on the relevancy and work schedule. To execute it sectoral project, UNICEF estimated to spend \$440,000 for the sanitary activities and has realized only \$300,000 (68%) representing a budgetary deficit of \$140,000 (32%). On its educational project, \$805,000 was budgeted for the year 2014 and has realized only \$390,000 (48%) was reported to have been ascertained leaving a budget deficit of \$415000 (52%). Other sectorial deficits in UNICEF’s 2014 refugee management budgets in Diffa region are those of health with a budget of \$780,000 with an actualized funding of 250000 (32%) leaving a deficit budget of 530,000 (68%), protections has a budget size of \$410,000 and a funded size of \$380,000 (93%) leaving a deficit of \$30,000 (7%). The highest unfunded gap in the UNICEF’s budget for 2014 refugee management in the Diffa region existed in the nutrition sector with

a budget of \$1,200,000 and a funding size of \$180,000 (15%) with a deficit of \$1,020,000 (85%) (UNICEF, 2015). Below are bar charts showing the budgetary deficits of UNICEF for the year 2014.

FIGURE 4.7.2 UNICEF SECTORAL FUNDING GAPS FOR MANAGEMENT OF REFUGEES IN DIFFA REGION 2014



Source: UNICEF (2015)

These appropriation and funding gaps were observe to have left a wide vacuum that undermined the delivery of the humanitarian aids throughout the refugees' session. The intensity of food shortages became endemic particularly with the suspension of activities in the Diffa region due the escalations of the crises with perilous attacks by the insurgents.

Another challenge observed in the management of the refugees in Maine Soroa town is the lack of proper strategy to guide the humanitarian assistances. Although, UNHCR which the body responsible for management of the refugees as well as the lead agency in the humanitarian exercise as propounded in the 1952 Convention (UNHCR, 2015), but the participation of other donors make it conspicuously difficult to ensure coordinated services. Whereas UNHCR is

rendering its service either independently or in support from other donors, several other agencies are independently rendering services either in form of data or in aid distributions.

Due to the lack of effective coordination mechanisms starting from the registration to the delivery of relief materials, in addition to pandemic of irregularities of nepotisms and corruption, refugees' were obviously subjected for z number of unnecessary registrations. Each of the participating donors embarked on separate registration. Because of the multiplicity of the registers and the inability to propound central register that may be uses by the participating agencies, many observers have found the activities of the bodies as over politicized.

Although, amidst the stated challenges in the registration process, extensive efforts has been geared in ensuring every refugee was registered by the Niger Government through its National Eligibility Commission in collaboration with UNHCR assisted by a community volunteered group [Community Action Committee].

One of the major challenges observed in the registration process and in the general refugee management was the porous nature of the Nigeria's and Niger boundary which ultimately made it difficult to control the intrudes of the refugees into the country. This is also together with the fact that the identities of the nationals of the two countries particularly at the border areas found difficult to be determined. Guided by these challenges, humanitarian aids are ultimately serves with less regard to identities of beneficiaries. This lack of specific guiding strategy in the distribution of aid culminated into imbalance in beneficiaries. While some are opportune to have been collecting simultaneously, others are not fortune to collect any despite their regular attendance at the aid distribution centers.

Another challenge in the management of refugee was the undue competitions among the humanitarian agencies. For factors observe much to have arouse from the poor coordination in the delivery of aid service by the UNHCR, there is widespread duplications of aids services in one sector. Most of the agencies including the private bodies are over concentrated on food aid with many other areas' needs untouched. Founded by this competitive act, it was observe that most donors are constantly revisiting their registers by subjecting the already traumatized refugees into unnecessary stresses in expectations. These high expectations for assistances subjected many refugees to duplicate their names in more than one record either on an account of ignorance or on the demand expectation of multiple shares; a behaviour that in no less undermined the services of the agencies.

The improper compliance of the refugee laws by the host government has also seen as another challenge of the Commission. According to the provisions of article 3 (non-discrimination) of the 1951 Convention and article II of the 1967 Protocol, "refugees deserve as a minimum, the same standards of treatment enjoyed by other foreign nationals in a given country and, in many cases, the same treatment as nationals of the asylum country" (UNHCR, 2011:23). Although, the convention has fastidiously made such proclamation as a panacea for refugee problems across the globe, equal treatment were not even rendered to the citizens of the same nationality mainly on the ground of ethnicity and religion. A good account of this is the case of indigenes and non-indigents in Nigeria especially in the north central state of Jos, which have degenerated into violent conflict that claims hundreds of lives and properties worth millions.

Added to these problems is also the principle of *non-refoulement* that prohibited the returns of refugees to territories or areas where his or their lives or freedoms are threatened. As such the principle stated that, it is prohibited for all States, regardless of whether they have acceded to the 1951 Convention or not, to

prevent refugee from entering its country, however, it was found that such provision was grossly abused in Niger Republic. Parts of such violation was that, under the guise of national security, many of the Nigerian refugees are occasionally denied into the major towns and sometimes forced back despite the befalling calamities in their areas. In so many times, it was observe that after lengthy and life-threatening journeys from their villages to flee the insurgent attacks, Nigerien securities at the border forces them back to Nigeria accusing them of bringing *Boko Haram* attacks into their territory. Although, some were allow to enter upon certifying the normal ECOWAS free movement requirement or entry permit fee in the sum of one thousand Nigerian-Naira, many others were forced back due to economic situations of their escapes. Additionally, many Nigerian refugees were arrested by the security agents for suspecting them as *Boko Haram* members and no further investigation were found to have ensured whereas the inability of the UNHCR to come into such affair was seen as another challenge of the commission in the management of refugees.

CHAPTER FIVE

5.0 SUMMARY, CONCLUSION AND RECOMMENDATIONS

5.1 SUMMARY

In the Kunz's postulations of refugee movement, push and pull factor are the basic motivators of refugee choice of asylum. The Nigeria's refugees in Maine Soroa town were nevertheless justifications of the Kunz typology of the three categories of anticipatory, acute and intermediate refugees' movement.

In the Anticipatory Refugee Movement theory, there are volumes of refugees who migrated prior to the complete deterioration of security situation in the region. However, majority of these compositions are of returnees (Niger Citizens living in Nigeria) and some skeletal number of Nigerian citizens (refugees). As these groups moved before the intensification of the security situations, they succeeded in moving with all their belongings including their businesses. Categories of these refugees are mostly from the well-to-do class (high-ranking civil servants, businesspersons and traditional rulers). As their movement is not frequent and their identities are not clear, their numbers were not file by the refugees Commission or any of their agencies. Anecdotal estimate by Community Action Committee (CAC, 2015) however put the number of these categories of refugees at 405 (as at July 2014).

The second categorization of the Kunz typology (Acute Refugee Movement) was also observe in Maine Soroa and comprises largest category of the refugees in the town. These categories of refugees according to Kunz are persons who succeeded with nothing but their lives. Because of physical and economic effects, many of the refugees in this classification are socially disintegrated and psychological traumatized and their survival was mainly on humanitarian aids and a hence a serious concern for the UNHCR. The compositions of refugees in Maine Soroa town spoke on numerous features of this category. On its social and

class composition, this category of refugees are predominantly residing in the camps and rely on aids for survivals.

Some elements of the intermediate Refugees Movement are also evident. However, what was observed as contrast to the Kunz's postulation is that, the increased deterioration of security challenges of the country of asylum would enable further migration. In the refugee situation in Maine Soroa, as a result of deteriorations of the security situations in the Niger Republic with the escalations of the insurgent activities in around mid of the year 2014, instead enabling further migrations into another country, many of the refugees reverted back to the Nigerian State despite the prevailing security challenges as internally displaced persons. Another major factor in addition to the deterioration of the security situation that had observed to warrant on this decision was the difficulties situation of refugee livelihoods in the camp occasioned by declining humanitarian services offered to them.

5.2 CONCLUSION

It was observed that, among the major factor for the Nigerians victims of the insurgent group *Boko Haram* to sought refuges in Niger republic was the continuous lost in confidence on the authorities of the Nigeria's state in fighting the crises in a shortest possible time. These suspicions built assumptions that the insurgency is politically motivated and expected to become a national phenomenon particularly with the sect's purported clamour for the establishment of Islamic State in the country. The prolong suspicions was observed as one of the basic factors that forced people in resorting to becoming refugees than IDPs.

On the provisions of relief materials, although, a geared effort existed throughout the study period, dissatisfaction was evident as most of the aid services remained skeletal and therefore inadequate and hence ignited widespread human destitutions. Most of the reasons observed in addition to inadequacy of relief

materials were the ill criteria from the side of the donors in the course of their humanitarian services.

Reasons ranging from limited resources and budget deficits were much observed; the volume as well as the untimely arrivals of the refugees has since rendered aid services difficult.

Another major problem observed is the poor coordination of activities between and among the agencies in the distribution of relief materials. Founded by this scenario, unscrupulous competition between and among major participating bodies were evident. These unnecessary competitions further culminated into wide range duplication of services. For example, while there are manifolds of demanding areas (health, education, shelter), emphasis was eminent on the food/nutrition services. The health sector that was among the major priorities of refugees was inefficiently renders as most of the services were over concentrated in food aids. For instance, assesses for hospital services was base on individual refugees' financial capabilities and the fact that health services in comparison to Nigeria are exorbitant in Niger Republic was not disputable. There were also poor sanitary conditions in the camps. For example, with the estimated 3500 occupants, the camps in Maine Soroa town have neither toilets nor latrines, defecation littered all over the camps.

Another challenge in humanitarian service is the lack of emergency vehicles. As attacks are persistently increasing, people are subjects for long distance journey taking days before arrival; no effort have been found that has been taken to evacuate the refugees. Added to this, the refugees distance from the basic social service centers coupled with the depilating security challenges of the area that instituted fear, accesses of the service are ultimately low. This was even more pronounces by the fact that, only 279 students were registered in the Maine Soroa Study Center. Most observed in this case was the fact that no child from in the largest camp has attended the school.

Although, UNHCR and the Niger Republic Government have recorded immense achievements in settling the terrified refugees, cases of harassment and intimidation by both the local population and security agents are eminent; a behaviour seen as a violation of the Refugee Convention. No effort was found to have taken or ensured either by UNHCR, Niger Government or any of their participating bodies in curtailing the menace. Whereas harassment of refugees by the security agents are mostly at the point of entry or at arrival under the aegis of screening for registrations, harassment of refugees by the locals are mostly at public meetings such as at the points of water collections, market places, schools etc. Both the camp and out of camps refugees are affected by this phenomenon, however, the out of camp refugees are heavily affected mainly for their proneness and proximity for the general public.

5.3 RECOMMENDATIONS

There is a need to propound a strong coordination system for humanitarian aids delivery among actors. The current system under the United Nations Office for the Coordination of Humanitarian Affairs (UNOCHA) was observed to be ineffective, a legislation should be enacted that will mandate for a centralized aids administration. A centralized aids administration will undoubtedly cushion the menace of unnecessary competitions among participating agencies.

Since it was observed that, majority of refugees in the world are victims of violence, as a humanitarian agency, UNHCR should liaise with the United Nations Peacekeeping Operation to institute mechanisms that will prevent the occurrence of conflict upon which displacement erupts always. These will also be ensured in collaboration with other regional and sub-regional bodies across the globe.

Through legislation, UNHCR together with Member States should reconcile their refugees' laws to avoid legislative conflicts. In Niger Republic, due to domestic

migratory policy, many refugees were denied entry into their territory; an act observed as a violation of the Refugee Convention.

Whereas the AU Convention on refugee is commendable, it should go beyond mere policy conception. In addition to this, as a matter of urgency, ECOWAS should adopt refugee management protocol at the sub-regional level. The over-reliance on UNHCR and other foreign donors whose finances is largely European based often, encountered difficulties in accessing and so delayed the service of the agency.

UNHCR has to liaise with regional bodies (ECOWAS as in this case) to facilitate the idea of Common Citizen (ECOWAS Citizen). Since it was observed that many refugees lack valid identity documents, with common citizenship, discriminations between refugees and indigenes can be minimized.

There is also a need of burden sharing. Since management of refugees is cost involving, United Nations should add to its refugee law the idea of burden sharing between refugee generating and receiving countries. In Africa in particular, refugee-receiving countries are among the most impoverished States of the continent that in most cases attributed for their ineffective refugees management and in some cases unwarranted repatriations.

An International law should be promulgated that will prosecute leaders who induce violence that ignited displacements of whatever kind. The law should also extend to leaders who failed to tackle national building issues in which case crises often erupted. Although, the existence of International Court of Justice (ICJ) and the International Criminal Court (ICC) are in good directions, the limitation of their laws should also be extends beyond petitions system.

For effective humanitarian exercise, there is a need to develop and implement policies and guidelines related to people with disabilities and older people. This should be ensures through training staffs to work with groups of people with

diverse disabilities, to ensure proper identification and data processing. This is particularly crucial for people with hearing, speech and sight impairments, and those with mental disabilities.

REFERENCES

- Abiye, S. (2011, May10th) The Abuja attacks, Lagos: *The Telegraph News* retrieved on 13/08/2015
- Ahmed, L.E & Chilaka, F.C (2013) The Political Economy of Criminality Along Nigeria-Benin Republic Borders and Worsening Insecurity in Nigeria. *Journal of Social Sciences and Public Policy, Vol.5.No.2*
- Aloziyuwa, S.O (ud) Contending Theories on Nigeria's Security Challenge in the Era of Boko Haram Insurgency. *Peace and Conflict Review* on <http://www.review.upeace.org/index.cfm?ejemplar=24&entrada=128>
- Arango, J. (2004). *Theories of International Migration: International Migration and the New Millennium*. Aldershot, Ashgate
- AriseNews online 22/01/2015 on www.arisenews.com retrieved on 02/04/2015
- Atim, G (2013). Impact of Refugee on Conflict in Africa. *Journal of Humanities and Social Sciences Vol.4.2*
- Babalola, O (ud). Combating Violent Extremism and Insurgency in Nigeria: A Case Study of the Boko Haram Scourge. *The FMSO-KU Global Security Studies Internship. University of Kansas* retrieved <https://kuscholarworks.ku.edu/handle/1808/14203>
- BBC (2014, January, 19) Boko Haram Taken Control of Nigeria's State, *The Bbc News*, retrieved from bbc.com.uk/boko-haram
- Bakewell, O (2011). *Conceptualizing Displacement and Migration: Processes, Conditions, and Categories*. International Migration Institutes, Oxford University, Mansfield Road, Oxford
- Barry, S (1981). The Experience being a Refugee: Insights from the Research Literature. *The international Migration Review, Center of Migration Review Vol.15.1*

- Berg, L.B (2004). *Qualitative Research Method for Social Sciences* 4th Ed, California State University , Long Beach
- Black, R., Ammasari, S., Mouillesseaux, S & Rajkotia, R (2004), *Migration and ProPoor Policy in West Africa*; Sussex Centre for Migration Studies. The Development Research Center on Migration, Globalization and Poverty, University of Sussex, UK.
- Brandly, F (2014). *Refugees and Forced Migration: Refugees Rights and Responsibilities*. https://www.mcgill.ca/isid/files/isid/syllabus-intd_497-fall_2014-megan_bradley-final_2.pdf
- Burhill, S., Linklater, A., Devetak, R., DONNELLY, j., Peterson, J., Reus-Smith, C & True, J (2005). *Theories of International Relation (3ed.)* Palgrave Macmillan New York.
- Campbell, J (2011, 9th September). To Battle Nigeria's Boko Haram, Put down Your Guns. *Foreign Affairs Spotlight* on <http://www.foreignaffairs.com/articles/68249/johncampbell>
- Campbell, J (2015, 12th February). Nigeria's Insistent Insurrection; *The New York Times* on <http://www.nytimes.com> retrieved on 25/02/2015
- Chukwuma, O.A & Philip, I (2014). Terrorism and Humanitarian Crisis in Nigeria: Insights from Boko Haram Insurgency, *Global Journal of Human-Social Science* Vol.14.1
- Cooper, D, & Greenaway, M. (2015). *ONS Methodology Working Paper Series No 4 Non-probability Survey Sampling in Official Statistics, (4)*.
- Degu, W.A (2002). *The State, the Crisis of State Institutions and Refugee Migration in the Horn of Africa: The Cases of Ethiopia, Sudan and Somalia*; PhD Thesis Summited

- to Amsterdam Institute for Social Science Research (AISSR). Retrieved on <http://hdl.handle.net/11245/1.307216>
- European Commission Humanitarian Aid (2014). Refugees and Internally Displaced Persons. *ECHO Fact Sheet, B-1047*, Brussels Belgium
- Fallis, A. . (2013). No Title No Title. *Journal of Chemical Information and Modeling*, 53(9), 1689–1699. <http://doi.org/10.1017/CBO9781107415324.004>
- Gondyi, G.D (2013). Emerging Pattern of Migration in Africa/Migration en Afrique de l'Ouest; *Migration Trend in Africa: West African Insight*
- Groody, D.G (2009), *Crossing the Divide: Foundations of a Theology of Migration and Refugees*. Theological Studies, University of Sussex
- Haddad, E (2004). Who is (Not) a Refugee? *EU Working Paper No. 2004/6* European University Institute, Florence
- Hiruy, K (2009). Finding Home Far Away From Home: Place Attachment, Place Identity, Belonging and Resettlement among African-Australians. *MSc Thesis Submitted To the University of Hobart, Tasmania.*
- International, A (2015). Boko Haram's Reign of Terror in North-East Nigeria. *The Nigeria Reporters* retrieved on www.nigerreporters.com/amnesty-international on 25/04/2015
- International Rescue Committee (2015). Thousands Displaced to Niger in Desperate Need of Food and Water. *The IRC in Niger* on <http://www.rescue.org/irc-niger> retrieved on 26/04/2015
- Ituma, O.S (2015). United Nations High Commissioner for Refugees and Management of Refugees in the West African Sub-Region. *International Affair and Global Strategy Vol.29.2* on www.iiste.org retrieved on 05/07/2015

- Institut National de la Statistique, Niger (2013), *Niger Population*. on www.geolive.com/cntry/niger.aspx
- Jastram, K., Achiron, M & UNCHR, (2001). *Refugee Protection: A Guide to International Refugee Law*. UN Commissioner for Refugees, Geneva, Switzerland.
- Jonathan, G (2014, 12 December). Internal and external Force Frustrating Boko Haram War. *Leadership News* retrieved on <http://leadership.ng/news>
- King, R & Skeldon, R (2010). Mind the Gap! Integrating Approaches to Internal and International Migration, *Journal of Ethnic and Migration Studies* Vol.1.2
- King, R (2012). *Theories and Typologies of Migration: An Overview and a Primer* Willy Brandt Series of Working Papers, University of Sussex, Falmer, UK.
- Kunz, E.F (1973). The Refugee in Flight: Kinetic Models and Forms of Displacement; *International Migration Review*, Vol. 7, No. 2 Retrieved from <http://links.jstor.org/sici?sici=0197-9183> on 16/01/015
- Mazur, R (1988). Refugee Participation Network: Linking Popular Initiative and Aid Agencies: The Case of Refugees Network Paper 2c. *Forced Migration Review* Vol.1.3
- McFadyen, G (2012). *The Contemporary Refugee: Persecution, Semantics and Universality*. ESharp, Special Issue 2012:9- 35 retrieved from <http://www.gla.ac.uk/esharp>
- Millar, C., Nadeau, J & Guy-Arcand, M (2013). Republic of Niger Risk Assessment Report, Country Indicator for Foreign Policy. The Peterson School of International Affairs, Carleton University .Available on <http://www4.carleton.ca/cifp/app/serve.php/1461.pdf>.

- Montclos, M.P (2014). *Nigeria's Interminable Insurgency? Addressing the Boko Haram Crises*. Chatham House, the Royal Institute of International Affairs, United Kingdom
- Naik, A (UD). Protecting Children from the Protectors: Lessons from West Africa on www.acdi-cida.gc.ca/childprotection Retrieved on 22/01/2015.
- National Population Commission (2010). Population and Housing Census, Priority Table Volume III Population Distribution by Sex, State, LGA & Senatorial District, Federal Republic of Nigeria, Abuja, Nigeria
- Nigeria Regional Refugee Response Plan (2014). Monthly Regional Overview. Regional Refugee Response Dashboard July, *UNHCR Situation Report, July 2014*. Chatelaine, Geneva.
- Norwegian Refugee Council (2014a). *Nigeria: Multiple Displacement Crises Overshadowed by Boko Haram*. Internal Displacement Monitoring Center , Rue de Varembe, Geneva, Switzerland retrieved from <https://www.google.com.ng/search?q>
- Norwegian Refugee Council (2014b) *Global Overview of People Internally Displaced by Conflict and Violence*. Chatelaine, Geneva, retrieved from www.internal-displacement.org
- Olson, M.E. 1979. "Refugees as a Special Case of Population Redistribution", in L.A.P Gosling, and L.Y.C. Lim. (Eds.) *Population Redistribution: Patterns, Policies and Prospects*. UN Fund for Population Activities, New York
- Online Forex Trading file:///F:/A Brief%20History of Niger Part1.htm Policy
- Onuaha, F.C (2014). A Danger not to Nigeria Alone- Boko Haram's Transnational Reach and Regional Responses Fredich-Ebert-Stiftung, Abuja, Nigeria
- Owutu, I.U (2014). Globalization and Management of Regional Conflicts and Security in Africa: The Case of ECOWAS, *Net Journal of Social Sciences Vol. 2(1)*

- Patrick, O & Felix, O (2013), Effect of Boko Haram on School Attendance In Northern Nigeria. *British Journal of Education, Vol.1 (2)*
- Phillips, C.A (2015). Do internally displaced people have rights under the law? <http://www.vanguardngr.com/2015/10/do-internally-displaced-people-have-rights-under-the-law/>
- Ploch, L (2011). Nigeria: Elections and Issues for Congress. Congressional Research on <http://www.vanguardngr.com/2015/10/do-internally-displaced-people-have-rights-under-the-law/>
- Richard, B.R., Ammassari, S., Mouillesseaux, S & Rajkotia, A (2004). *Migration and Pro-Poor Policy in West Africa*; Sussex Centre for Migration Research Development Research Centre on Migration, University of Sussex, Brighton
- Richmond, A.H (U.D). Sociological Theory of Migration; The Case of Refugee on www.cedir.fr/lee-theory-migration retrieved on 24/03/2015
- Rutinwa, B (1999). *The End of Asylum: The changing nature of refugee policies in Africa* New Issues in Refugee Research, Retrieved from <http://www.unhcr.ch/cgi-bin/texis/vtx/research/opndoc.pdf?> 08/02/2015
- Rwamatwara, E (2005). Forced migration in Africa: A challenge to development *Stichproben Wiener Zeitschrift für kritische Afrikastudien*
- Samers, M (2010). *Migration (Key Ideas in Geograph)*. Routledge Service, London on <http://www.fas.org/sgp/crs/row/RL33964.pdf> Retrieved 15/01/20
- The Nation (2014, 6th January). Boko Haram: UNHCR Worried Over Return of Refugees from Niger. *The Nation News* available on www.thenationonline.com/unhcr-nigeria

- Tawfiq Ladan, M.T (2012). Diagnostic Review of Insurgency in Nigeria: The Legal Dimension. Paper Presented at the National Institute for Policy and Strategic Studies, Kuru, Jos, Plateau State
- Thomson, V (2012). Boko Haram and Islamic Fundamentalism in Nigeria, *Global Security Studies*, Vol. 3 No. 3
- Thorsen, D (2009). Child and Youth Migration in West Africa: Research Progress and Implications in Africa.
- UNICEF (2015). Niger Response for Displaced Children and Women from North East Nigeria on www.unicef.org/infocountry/niger.html retrieved 10/05/2015
- UNHCR (2009). Protecting Refugees; the Role of UNHCR, an Afghan Refugee Working Paper
- UNHCR (2014a). UNHCR Operation in Niger April 2014 Fact Sheet on www.unhcrniger.tumblr.com retrieved 20/02/2015
- UNHCR (2015a). Niger's Weekly Refugees Update May 2015 <http://data.unhcr.org/SahelSituation/country.php?id=502> retrieved on 11/05/2015
- UNHCR, (2011a). The 1951 Convention Relating to the Status of Refugees and its 1967 Protocol, Geneva, Switzerland
- UNHCR (2014). Emergency Response for the Nigeria Situation; Supplementary Appeal, Donor Relations and Resource Mobilization Service
- UNHCR (2015b). UNHCR Country Operations Profile-Niger. *Working Environment Global Overview* on retrieved from <http://www.unhcr.org/pages/49e484ee6.html> on 26/04/2015
- UNHRC (2015), *Annual Report of the United Nations High Commissioner for Human Rights Violations and Abuses Committed by Boko Haram and the Impact on*

Human Rights in the Affected Countries. Thirtieth Session Report No. A/HRC/30/67, Geneva, Switzerland

UNHCR (2011b), Resettlement Handbook, Resettlement Service Division of International Protection, Rue de Montbrillant, Geneva, Switzerland

UNHCR (2013). War's Human Cost; UNHCR'S Global Trends Update. Report from UNHCR retrieved from <http://reliefweb.int/report/world/unhcr-global-trends-2013-wars-human-cost>

Vincent, M (ud). IDPs: Rights and Status, Force Migration Review.

Woodcock, J (2000). *Refugee Children and Their Families: Theoretical and Clinical Perspective*. Whurr Publishers Limited, Bristol, UK.

Youngblood-Coleman, D (2012). Nigeria: Political Conditions. 2012 *Country Watch*. Houston, Texas. Retrieved from www.countrywatch.org on 05/2/2014

Zetter, R (1999). Labeling Refugees: Forming and Transforming a Bureaucratic Identity, *Journal of Refugee Studies* VoL4.1

Appendix 1

Table 1.1 SOME OF THE LOCAL GOVERNMENT AREAS CONQUERED BY BOKO HARAM WITH DATES OF THE ATTACKS

Town/LGAs	Date Attacked	Population size
Damboa	18 TH July, 2014	233200
Buni Yadi/Gujba	28 TH July, 2014	129797
Gwoza	August 24	276568
Marte	August 28, 2014	129409
Dikwa	August 28	105042
Mafa	August 28	103600
Bama	1 ST September, 2014	270119
Banki	2 ND September, 2014	4937
Bara/Gulani	3 RD September, 2014	103516

Madagali/Gulak	6 TH September, 2014	135142
Nganzai	6 th September, 2014	99074
Minchika	8 TH September, 2014	166238
Gamboru Gala	17 TH October, 2014	236498
Abadam	19 TH October, 2014	10064
Mubi	29 TH October, 2014	281471
Maiha	10 TH November, 2014	110175
Chibok	13 TH November, 2014	66333
Malam Fatori	9 th November, 2014	100065
Damasak	25 TH November, 2014	116633
Damaturu	1 st and 9 th December 2014,	87708

Geidam	21th December, 2014	155740
Baga/Kukawa	3 RD January, 2015	203343
Kanamma/Yunusari	13 TH January, 2015	125940
Monguno	25 TH January, 2015	109834
Kala/Balge		60834

Source: www.punchng.com/news-boko-haram, National population commission (2006),
 Researcher's Diary

APPENDIX 2

**DEPARTMENT OF POLITICAL SCIENCE
BAYERO UNIVERSITY KANO
NIGERIA**

Dear Sir/Madam,

I am a student of the above named institution undergoing a Masters programme (MSc Political). As part of the requirement for graduation of the programme, I am conducting a research on the “ROLE OF UNITED NATIONS HIGH COMMISSION FOR REFUGEES IN THE MANAGEMENT OF REFUGEES IN MAINE SOROA, REPUBLIC OF NIGER.”

Sir, you are chosen as one of the respondents to supply information for the study. All information supplied can be purely for academic purpose and in course that your identity or the contents of the information can be reveal to anybody for whatsoever apart from the purpose for which the information was solicited.

BASIC BIODATA INFORMATION OF RESPONDENTS

Age Sex..... Country of Origin State
of Origin Local Govt
Educational Qualification Occupation

QUESTIONS

1. Please what can you say about your experience with the Boko Haram activities?
2. Please why did you prepare to crossed out of the Nigeria's border to Niger republic where others resorting to the status of internally displaced persons?
3. When did you arrived into Niger Republic?
4. Did you arrived in individual or in group?
5. How did you managed to escaped from the activities of the insurgency?
6. How long does it took you to arrived to Niger Repulic?
7. Please can state if you have encountered any difficultie in the cause of your movement?
8. On arrival, are you welcome or received by body or organisation?
9. Who received you?
10. Where were you taken to after receiving?
11. How did you identify yourself to the receiving agencies?
12. Have you been registered by any of the organisation?
13. In what category refugee or returnee were you registered?
14. In your experience, how can you rate the registration processes?
15. After registration, have you receive any assistance?
16. Can you tell the bodies/agencies involved in the assistance?
17. Please can you state the types of assistances offered for you?
18. How efficient the service renders for you?

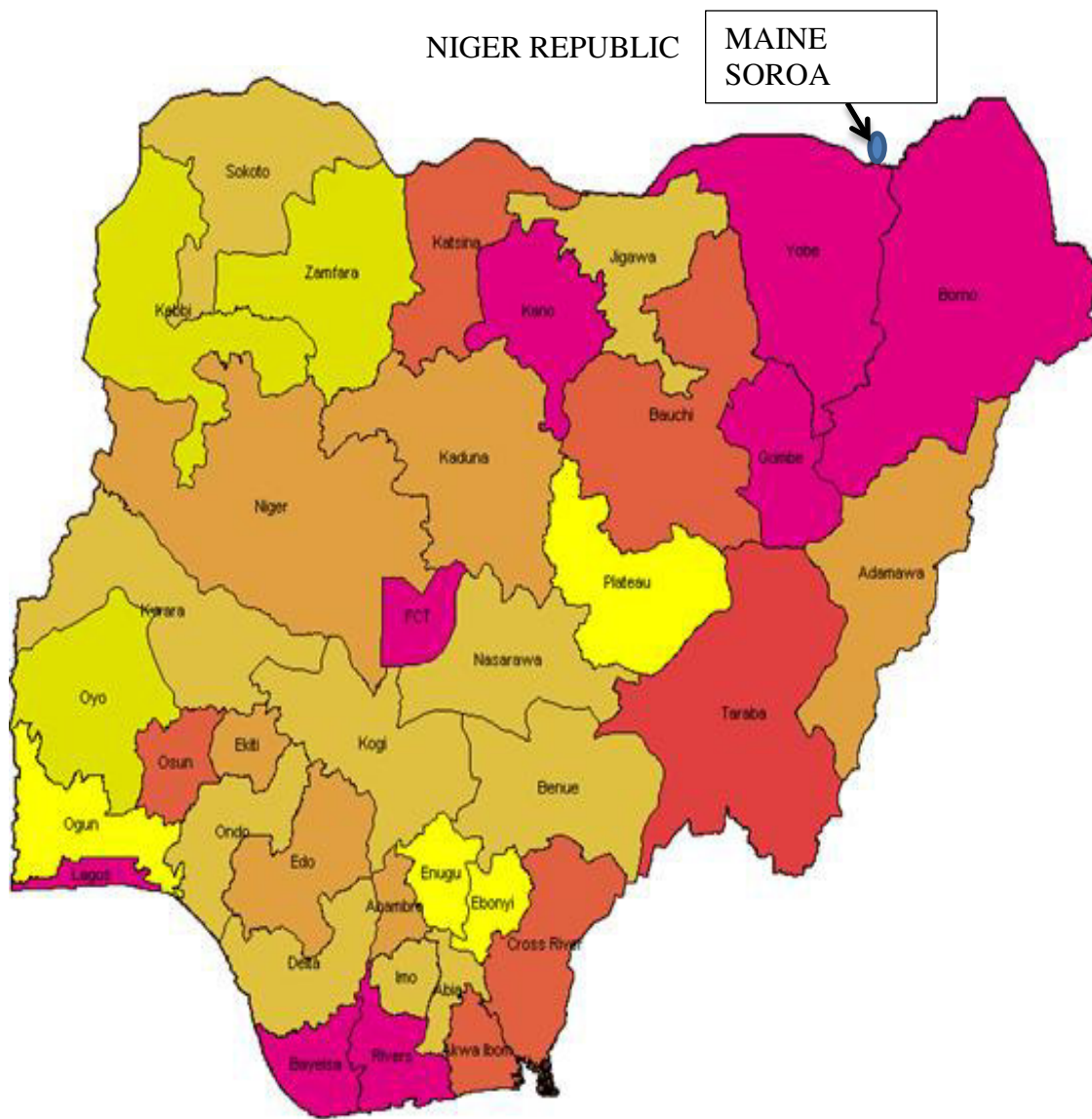
19. Can you please state, if there is/are any difficulties encountered in your staying as a refugee?
20. In your opinion, what are the causes of difficulties?
21. As Boko Haram is degraded as a result of onslaught by the Nigeria's army with support of its neighbours, if any case you are asked to go back, can you accept to do so?
22. What other challenges can you state that has hindered the aid services of the humanitarian agencies in Niger Republic's Mainé Soroa?

Appendix 3

MAPS OF NIGERIA SHOWING THE POINT WHERE MAINE SOROA IS
LOCATED IN NIGER REPUBLIC



Jellyfish Quaterly (2012)



Source: National Population Commission (2010)